

# Sandra Newbury, DVM



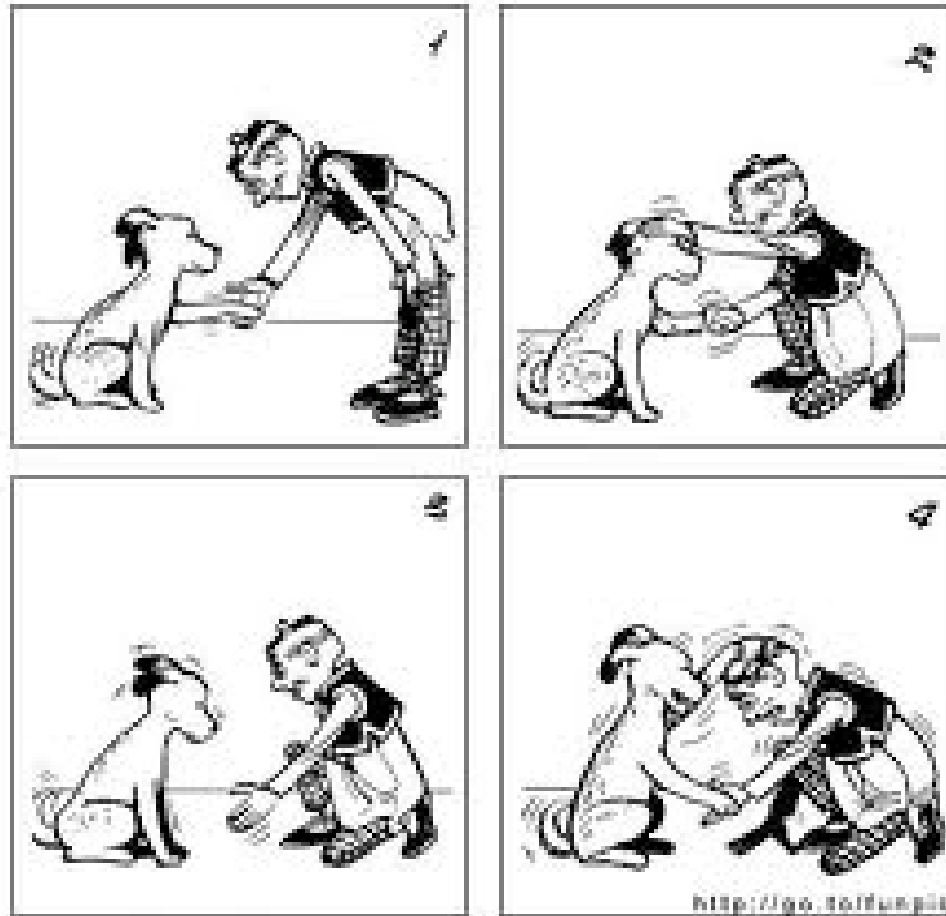
Koret Shelter Medicine Program  
Center for Companion Animal Health  
University of California, Davis

[www.sheltermedicine.com](http://www.sheltermedicine.com)

[www.facebook.com/sheltermedicine](https://www.facebook.com/sheltermedicine)

Adjunct Assistant Professor of  
Shelter Animal Medicine  
Department of Pathobiological  
Sciences  
University of Wisconsin-School of  
Veterinary Medicine

# The Shelter Handshake: Mastering the Art of Intake



[virtualconsultant.sheltermedicine.com](http://virtualconsultant.sheltermedicine.com)

[www.ASPCApro.org/stay](http://www.ASPCApro.org/stay)

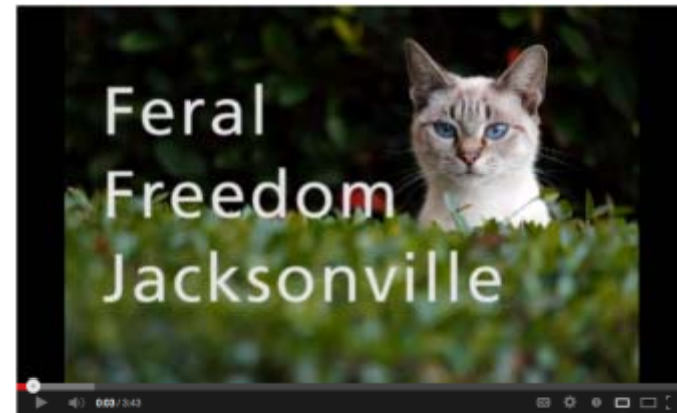


Thanks to the ASPCA for the partnership with UC Davis that makes my position possible.

# Should they come in at all?

## Time for a Paradigm Shift

- Alternatives?
- Timing?
- Likelihood of a positive outcome?
- Need for intervention?



Feral Freedom Jacksonville:  
[http://www.youtube.com/watch?v=92Yq7Y6mH\\_c](http://www.youtube.com/watch?v=92Yq7Y6mH_c)

[http://www.maddiesfund.org/Maddies\\_Institute/Webcasts/Making\\_the\\_Case\\_for\\_Community\\_Cats\\_Part\\_One.html](http://www.maddiesfund.org/Maddies_Institute/Webcasts/Making_the_Case_for_Community_Cats_Part_One.html)

# Diversion and Assistance Programs

- Rehoming websites
- Medical assistance
- Behavioral assistance
- Food pantry
- Vaccine programs
- Others?...

**“The rehoming service is an alternative to surrendering your pet to the shelter.** By listing here, your pet is able to stay in the familiar comfort of your home until a new home is found. It also helps to alleviate overcrowding in the shelter due to the numerous unwanted animals arriving daily.”

# Scheduled Intake

- Allows thoughtful planning on both sides
- Opportunity for alternatives to be found
- Designate and equip staff to schedule appointments
- 5-7 day wait time may actually help
- Provide medical, behavioral, rehoming resources
- Decide on plan for those who can't/won't wait

## Surrender your pet

**ANIMAL ADMISSIONS CENTER (763) 412-4969**

*Animals accepted only by appointment, call to schedule*

Let's work together to ensure the best possible solution for you and your pet. Click on the following links for additional information.

- **ALTERNATIVES TO SURRENDERING YOUR PET**

We may be able to help you keep your pet at home or there may be alternative rehoming options available to you.

- **SURRENDERING YOUR PET TO ANIMAL HUMANE SOCIETY**

Begin the process of surrendering your pet to AHS if alternative resources don't address the circumstances you are experiencing with your pet.

- **SURRENDER FORMS FOR YOUR APPOINTMENT AND FEES**

Complete and print out the **required** corresponding surrender form and bring it and a copy of your pet's veterinary records with you to your appointment.

*Animal Humane Society is an open-admission facility that serves all people and animals.*

# Which would you choose?

A screenshot of the California Department of Motor Vehicles (CA.GOV) Appointment System website. The page is titled "Appointment System" and includes a search bar, navigation links, and a sidebar with "Identity Management Portal" and "DMV Homepage" sections. The main content area contains a form for scheduling appointments, with sections for "Which office would you like to visit?", "How many items would you like to process?", and "Select which item(s) you would like to do". The sidebar includes a "CAUTION!" warning about security and a "DMV DRIVERS CHARGE" logo.

CA.GOV California Department of Motor Vehicles

View sbossmo.ca.gov Contact Us | Español

You have 0 items in your shopping cart

### Appointment System

You can make Appointments for up to three customers and/or up to three items.

Which office would you like to visit?  
(Make a selection from the map or the drop down list of offices.)

Map CA DMV Offices

How many items would you like to process?

1 item  
2 items  
3 items

Select which item(s) you would like to do

Apply for, replace, or renew a California:  
• Driver's License (not including behind-the-wheel driving tests)  
• Identification Card  
• Instruction (Learner) permit  
• Additional types of services/information

Register or title a vehicle or vessel (boat):  
• Plates and stickers  
• Title or registration  
• Moving Permits  
• Additional types of services/information

### Identity Management Portal

LOGIN/REGISTER  
Login Here  
Register Here

DMV Homepage

Types of Services:

- Driver License
- Identification Card
- Vehicle Registration
- Driving Tests

Additional Info:

- FAQs
- Privacy/Security

**CAUTION!**  
Is your computer secure?  
Security Awareness (PDF)

STATE OF CALIFORNIA  
DMV  
DRIVERS CHARGE

# One Shelter's Experience

## Incoming

- Down 25%

## Placement Rate

- Up 20%
- Now at 81%

## Euthanasia Rate

- Down 39%
- Now at 20%

## Length of Stay

- Cats 10.5 days
- Dogs 12.8 days

## Call Center

- Of those who do not make an appointment 40% have either re-homed on their own OR utilized a resource and decided to keep animal.

Slight increase in feline impounds for local animal control; now transferring cats in weekly

Small cat cages converted 3 into 1

<http://www.animalhumanesociety.org/>

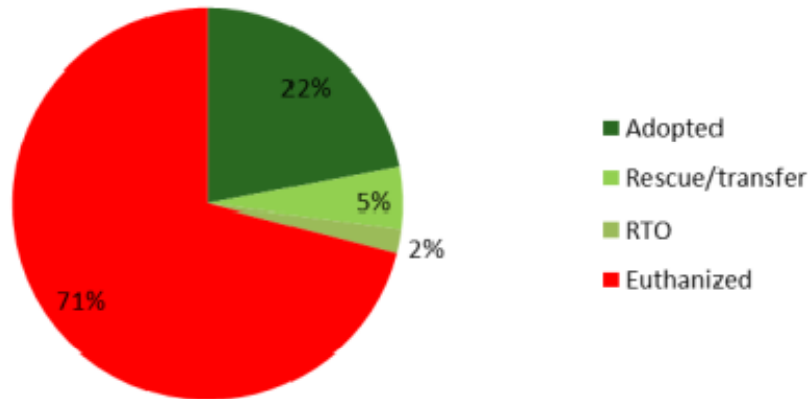




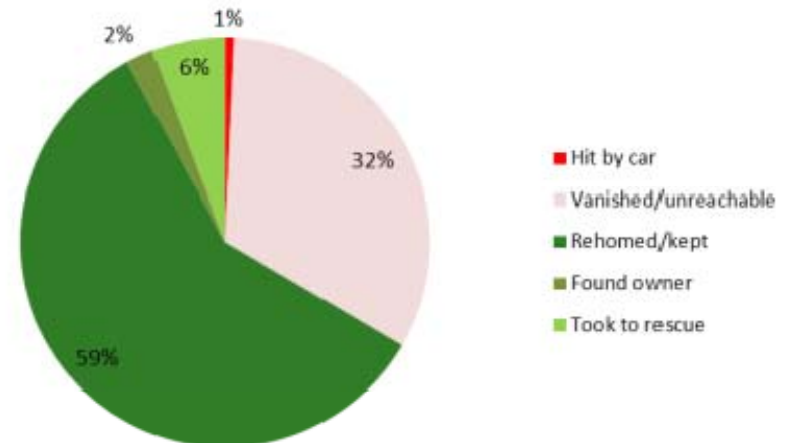
# Not the Only Game in Town



## Feline outcomes California



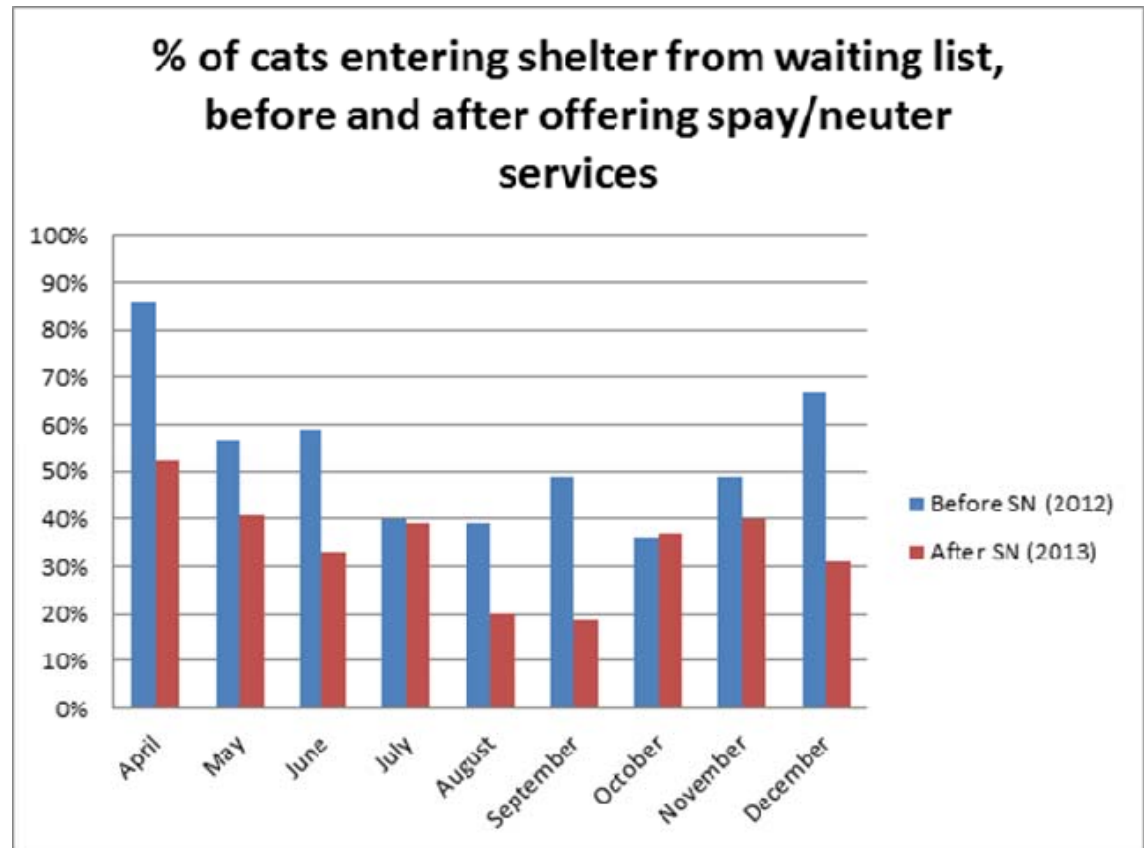
## Feline outcomes stray wait list



[www.yourspca.org](http://www.yourspca.org)

# Subsidized Spay / Neuter

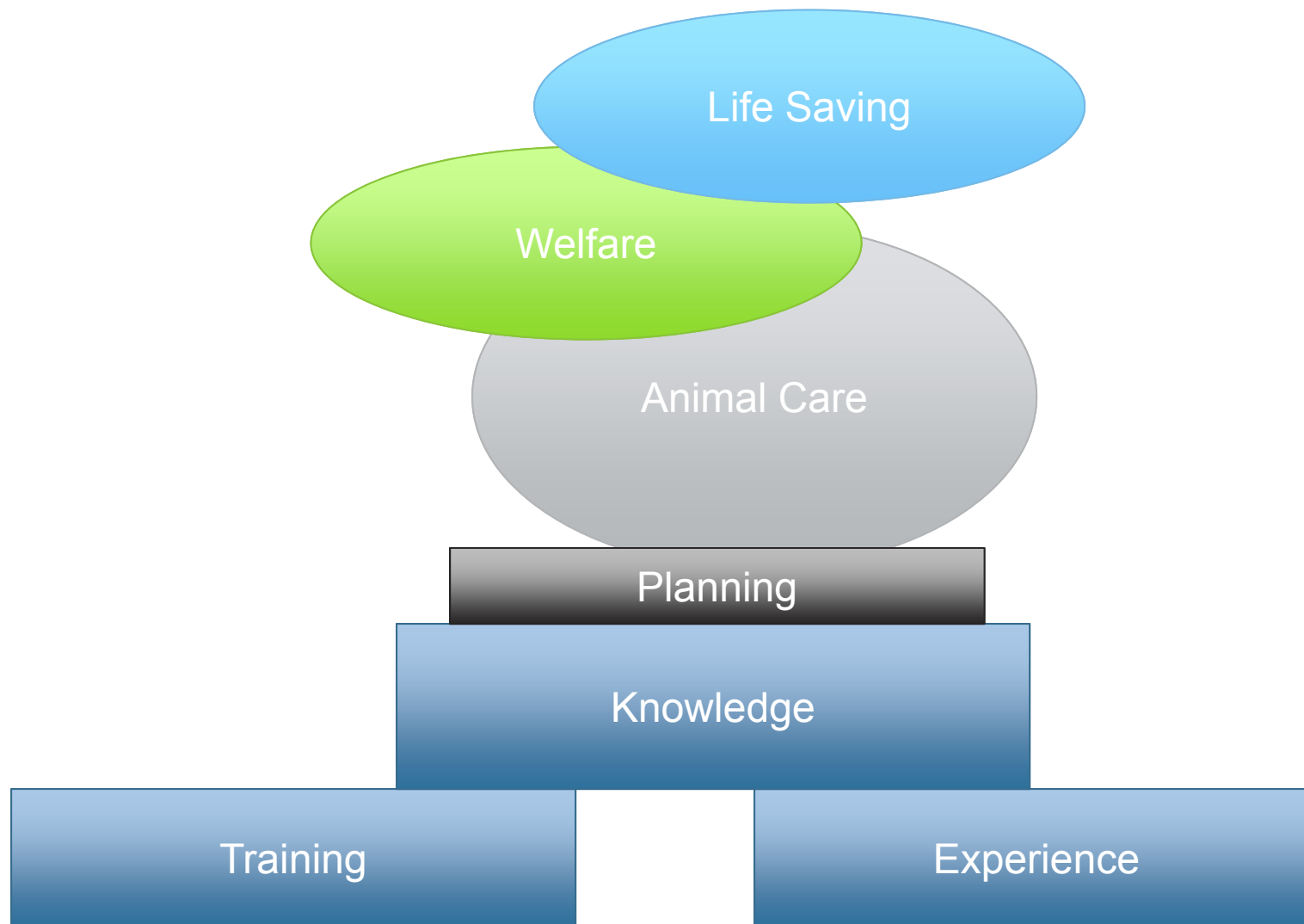
- Cats admitted from the waiting list - 54% to 35%
- Alternate solutions up from 46% to 65%



Erie Co SPCA

**If they do come in...**

# Standards of Excellence at Intake



# How We Say “Hello” Matters

## Key Components:

- Identification check
- Stress reduction
- Evaluation
- Infectious disease control
- Prompt provision of care
- Health AND behavior
- Provide information to facilitate adoption, transfer or alternate placement



# Intake is Only the Beginning

- Evaluate at intake
- Make choices for efficiency, support and prevention
- Then...
- **MONITOR, MONITOR, MONITOR**

Check out our Virtual Consultant module on monitoring at [virtualconsultant.sheltermedicine.com](http://virtualconsultant.sheltermedicine.com)

Monitoring sheets available at [www.sheltermedicine.com](http://www.sheltermedicine.com)

# Where does the plan start?

- Before the animals get there!
- When you are building the shelter
- When you set up to foster or rescue
- Before the phone rings



# What to include?

- Numbers
- Pathway planning
- Staffing (volunteer or paid)
- Location
- Supplies
- Welfare
- Response / communication plans
- Safety
- Follow up

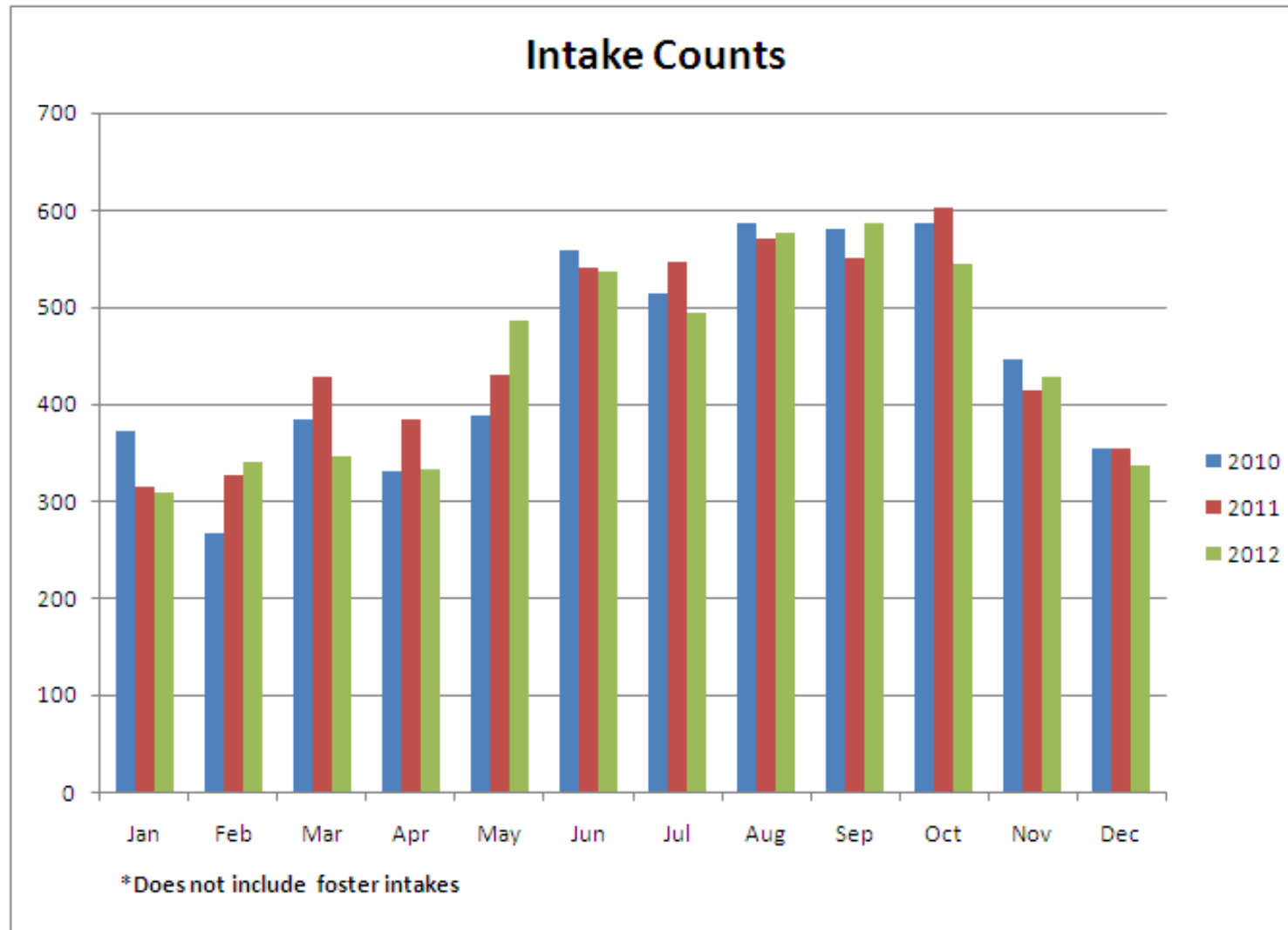




# Intake Capacity Planning: Forecasting

Month	STRAY	OWNER SUR	TRANSFER-EXT	AD RETURN	CONFISCATE	BORN	TRANSFER	WILDLIFE	Grand Total
2010	3228	1594	268	136	60	45	32	3	5366
Jan	183	108	56	17	3		4		371
Feb	138	96	28	5					267
Mar	203	135	27	9	3	3	4		384
Apr	208	88	7	9	13	5			330
May	264	93	8	9	6		7		387
Jun	335	160	42	10	4	4	4		559
Jul	345	130	24	10	3		2		514
Aug	371	176	11	18	7	4			587
Sep	351	174	11	11	5	22	5	2	581
Oct	368	163	28	12	11	3	1		586
Nov	241	161	17	15	3	4	5		446
Dec	221	110	9	11	2			1	354

# Trends



# Average Daily Intake Expectations

- Monthly intake divided by the days in the month
- Averages may not tell the whole story but help with C4C planning
- Look at daily intake trends to see ranges

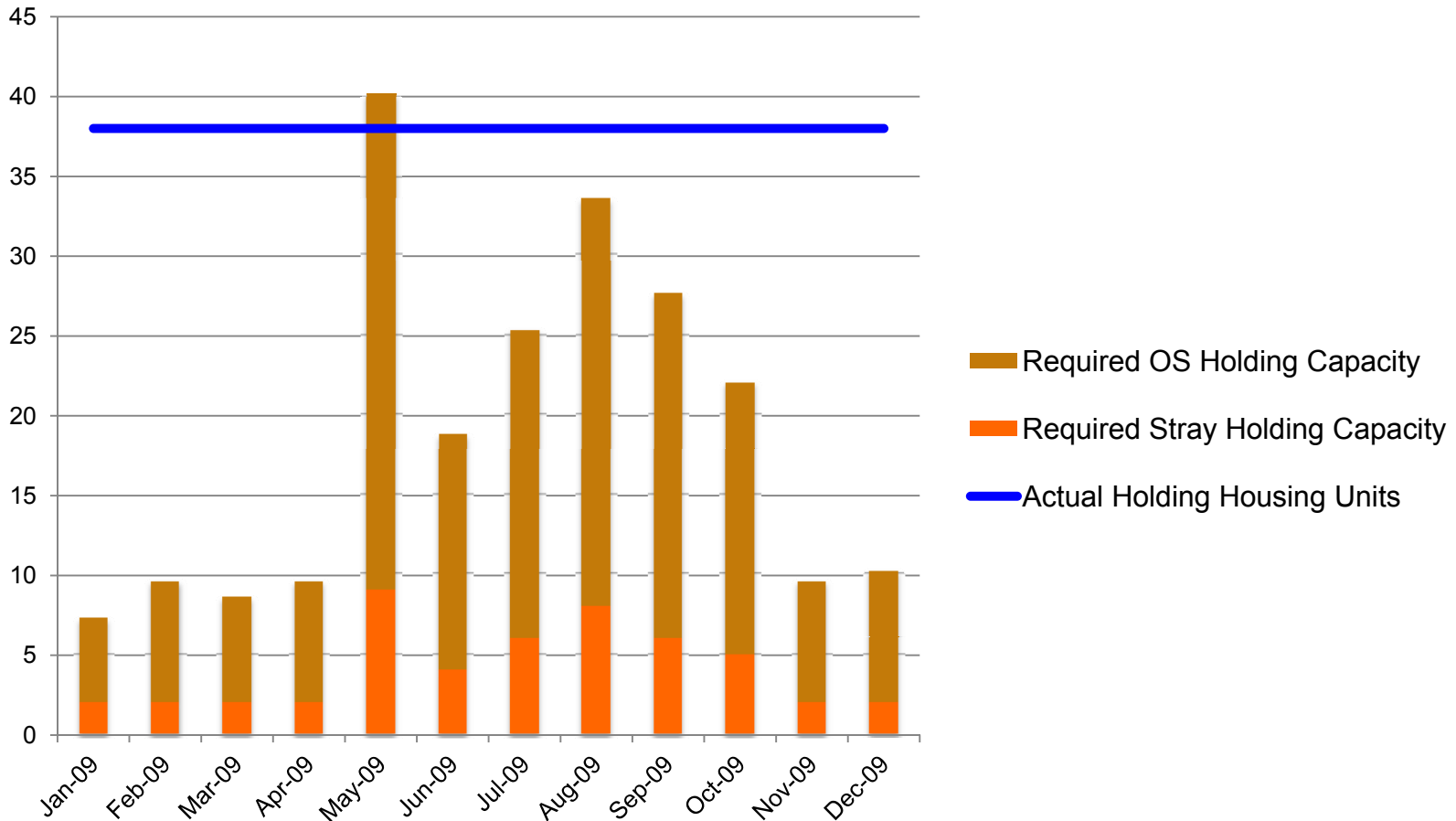
	All	Dogs	Cats
Jan	12	4	6
Feb	9	4	4
Mar	13	6	5
Apr	11	4	5
May	13	5	7
Jun	18	5	11
Jul	17	5	11
Aug	19	6	11
Sep	19	5	11
Oct	19	6	11
Nov	15	5	8
Dec	12	4	7

# Intake Staffing

- Time allotted
  - Reception
  - Evaluation
  - Treatment
- Training
  - Medical
  - Behavioral
- Supervision
- Team work
- Back-up
- Other duties?

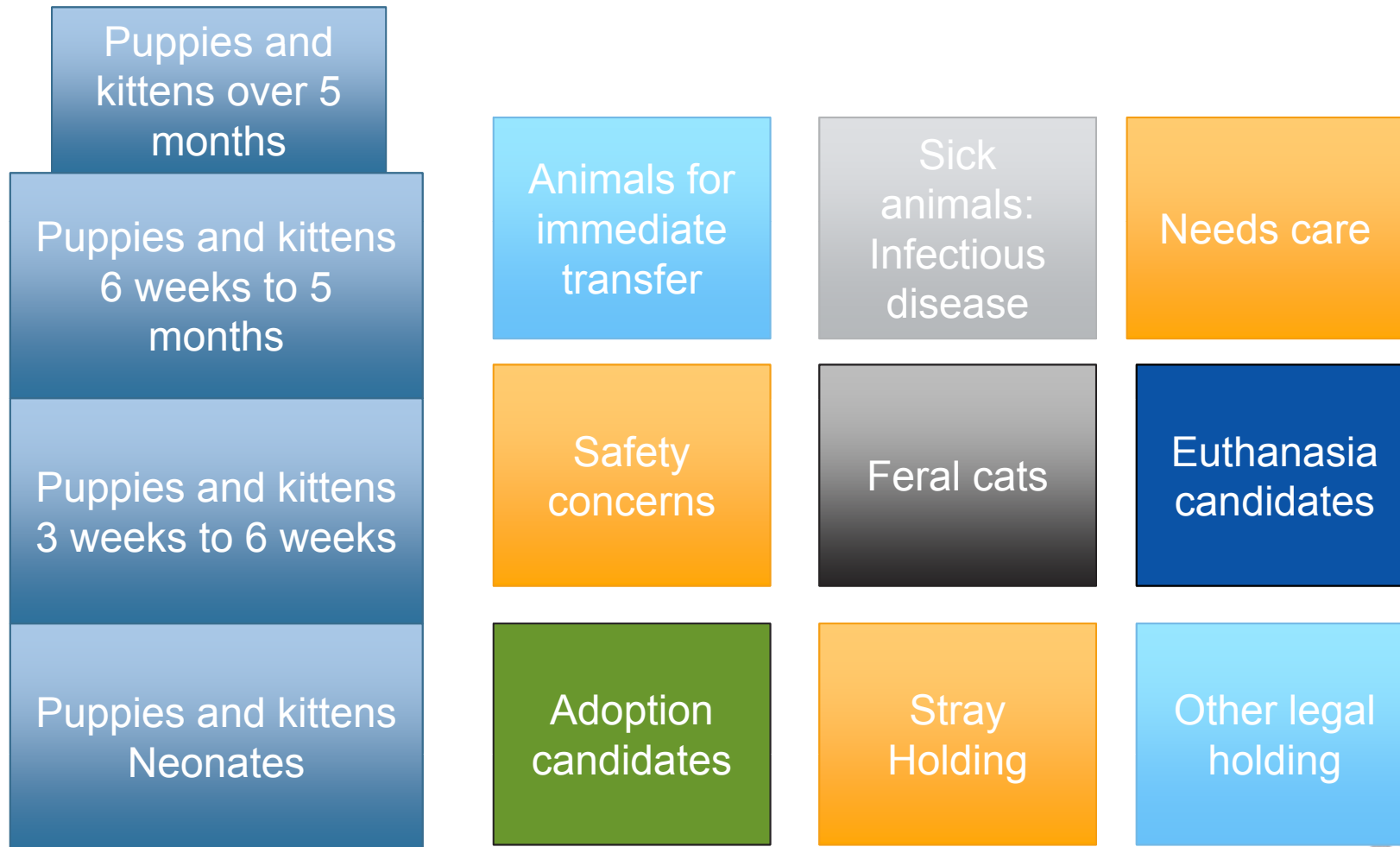
	All	Dogs	Cats	Time per intake (minutes)	Total time per day (hours)
Jan	12	4	6	15	3
Feb	9	4	4	15	2.25
Mar	13	6	5	15	3.25
Apr	11	4	5	15	2.75
May	13	5	7	15	3.25
Jun	18	5	11	15	4.5
Jul	17	5	11	15	4.25
Aug	19	6	11	15	4.75
Sep	19	5	11	15	4.75
Oct	19	6	11	15	4.75
Nov	15	5	8	15	3.75
Dec	12	4	7	15	3

# Required Holding Capacity (RHC)



**Stray holding capacity + OS Holding Capacity = RHC**

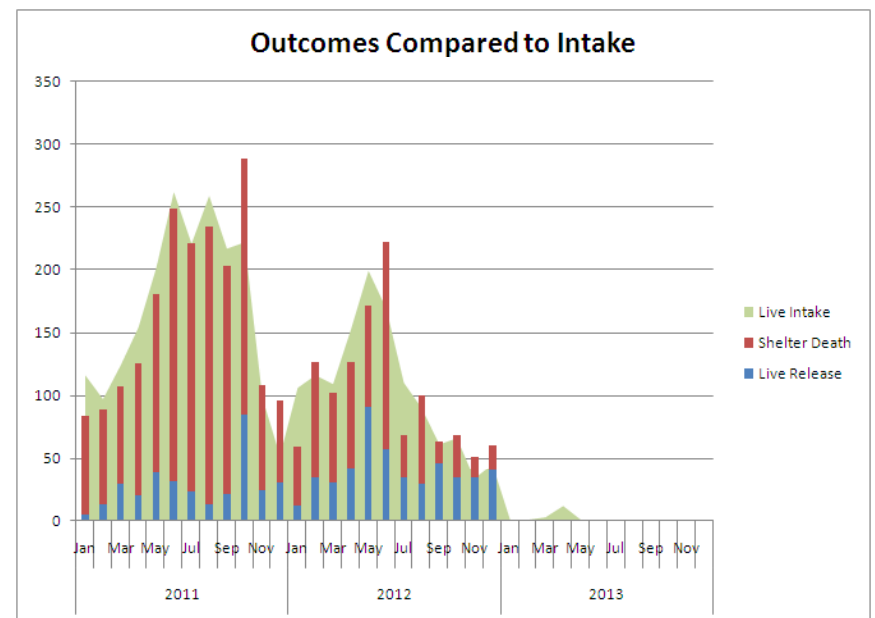
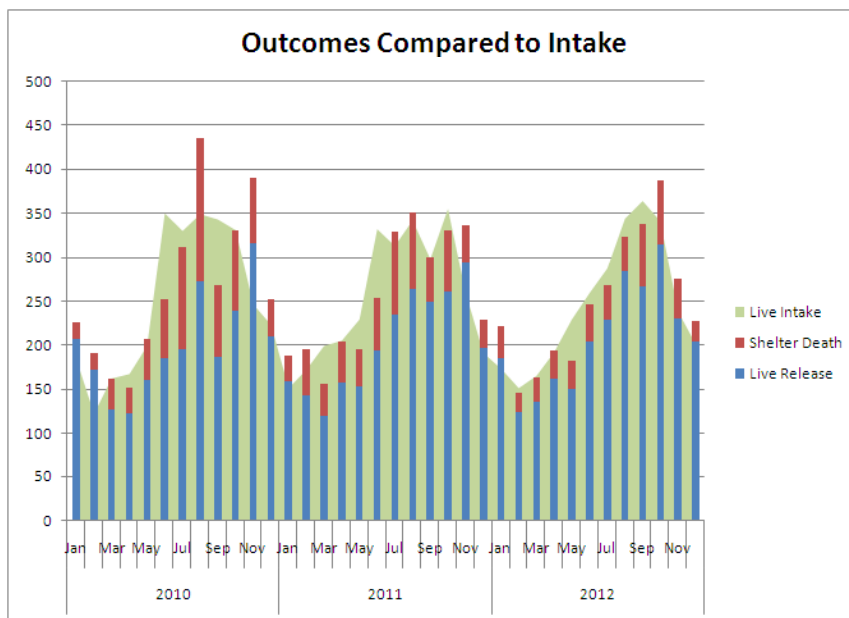
# Pathway / Location Planning



# Destination Capacity Planning

## Live Outcomes

- Pathway planning



**Learn more about estimating  
capacity and pathway planning**

**[ASPCapro.org/stay](https://ASPCapro.org/stay)**



# Location (Where to go from admit?)

“Ideally (shy, poorly socialized, feral and geriatric cats and dogs) animals, or any animal that is showing signs of stress, should be housed in separate, calm, quiet areas beginning at intake”

- ASV Guidelines for Standards of Care in Animal Shelters

**BUT.....**

# “Chill Out” Rooms?

- Often lead to a cycle of escalation
- Often undesirable location
- Cage moves may be stressful
  
- **Every area should be a chill out area**
- Try flipping your criteria
  - move if they don't adjust



# Housing

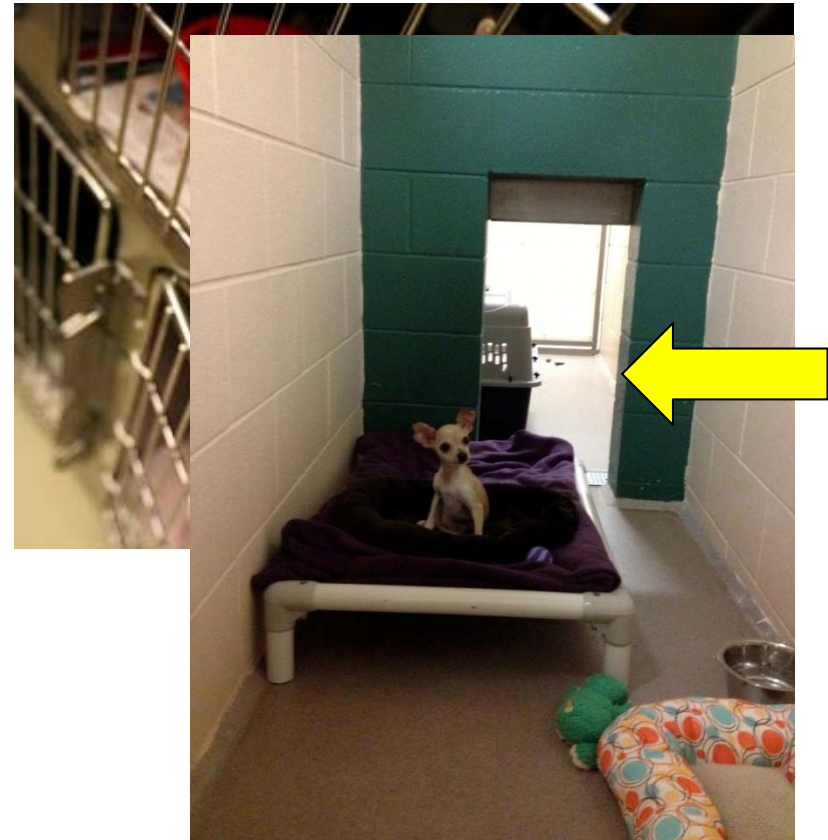
Good housing opportunities starting at intake



# Why Double Compartments?

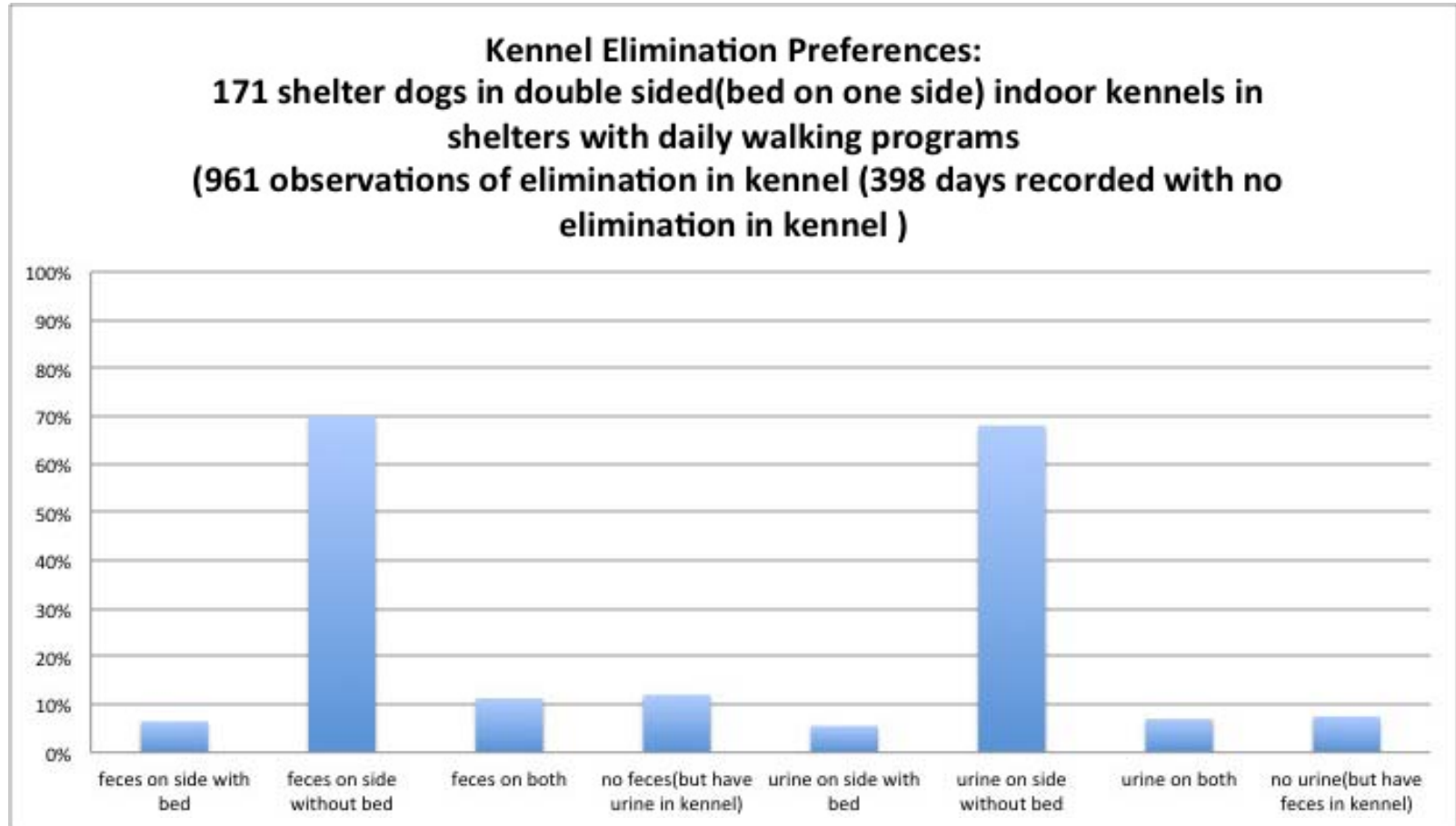
## Benefits

- Increases well being
- Decreases stress
- Easier cleaning
- Decreases diseases
- Decreases care cost
- Decreases LOS
- Positive effect on adoptions



Fantuzzi 2010, Gourkow & Fraser 2006, Wells & Hepper 1992

# Elimination Habits of Dogs in Double Sided Kennels



<http://www.plosone.org/article/info%3Adoi%2F10.1371%2Fjournal.pone.0096254>

# Intake Procedures

- Assess the animal initially before removing from its cage
- Scan for microchip and look for other identification
- Estimate the age or record known age
- Identify gender
- Record intake weight
- Complete a brief physical exam
- Wood's lamp exam
- Vaccinate
- Complete a brief evaluation of behavior
- Record intake health and behavior status and exam findings in paper records or computer database
- Deworm/apply external parasite control
- Address sick, injured, stressed animals promptly
- Assign an initial pathway plan including initial housing location

# How long should it take?

- Carefully estimate times for doing intake procedures.
- Weigh the cost vs. benefit of each additional procedure
- Weigh the risks of rushing



# Intake Area Materials / Layout

- Refrigerator
  - Vaccines
  - Tests?
- Adverse reaction response kit
  - Supplies and instructions
- Change of clothes
- Disinfectant
- Table
- Non-porous surface
- Clear work area
- Computer
- Electrical outlets?



# Intake Area Materials

- Telephone
- Camera
- Picture station
- Scale (small and large)
- Stethoscope
- Wood's Lamp
- Flea comb
- Parvo tests / other tests?
- Intake Treatments?
- Ear cleaner?
- Nail trimmers?
- Clippers?
- Safety equipment and Restraint devices
- Muzzles
- Nets
- Gloves? (not so much)

# Intake Area General Rules

- Contact areas cleaned and disinfected between animals
- Carriers
  - Ease of opening
  - Ease of disinfection
  - Disinfected after each animal
- Separate cats and dogs
- Separate intake area for sick animals?
- House incoming healthy animals in clean, disinfected housing units away from sick animals.
- Change clothes before susceptible and after sick

# Create Identification Record

- “A unique identifier (e.g. name and/or number) and record must be established for each animal upon intake”
- Record should include:
  - Identifier
  - Results of microchip scan
  - Microchip number, if present
  - Source of animal, dates of entry and departure
  - Outcome
  - Species, age, gender, physical description
  - Available medical and behavioral information

# Physical Description

## Mixed Breed Dog Adoption Campaign Gives Lovable Pooches New, Unique Breed Names (VIDEO)

Posted: 09/05/2013 8:38 am EDT



[http://www.huffingtonpost.com/2013/09/05/mixed-breed-dog-adoption\\_n\\_3869267.html](http://www.huffingtonpost.com/2013/09/05/mixed-breed-dog-adoption_n_3869267.html)

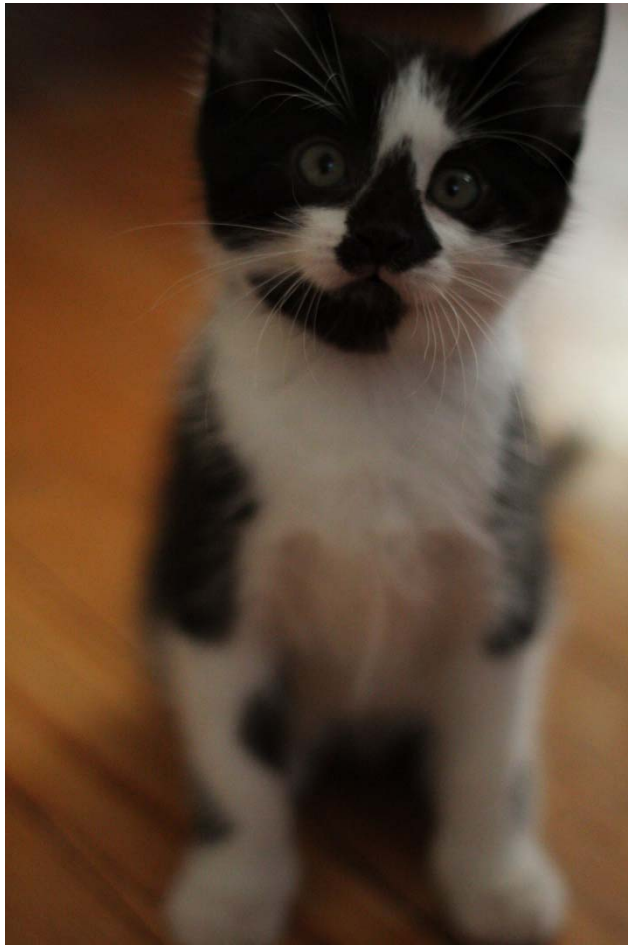
# Estimating Age

- Most important is 5 month marker for vaccination
- Weight for kittens (about 1 lb / month) but quite variable
- Gait
- Eye color
- Lens changes
- Teeth condition
- Use a combination of clues



Adult k9 tooth erupts between 4-6 months

# Intake Exams



Check out:  
[Virtualconsultant.sheltermedicine.com](http://Virtualconsultant.sheltermedicine.com)  
Survey on Performing Health Exams

Scanned for Microchip: +/-

Chip # \_\_\_\_\_

## ATTITUDE

\_\_\_ friendly  
\_\_\_ scared  
\_\_\_ fractious  
\_\_\_ other: \_\_\_\_\_

## WEIGHT

\_\_\_\_\_ kgs / lbs

## COAT & SKIN

\_\_\_ normal  
\_\_\_ hairloss  
\_\_\_ flea dirt / live fleas  
 Capstar – 4 weeks and up  
0.25 tablet / 0.50 tablet  
 Praziquantel Inj. – 6 weeks and up  
0.20mL / 0.40mL  
 Revolution-Ok as early as 2 wks IF HEALTHY  
 ~~warmer~~, soapy bath IF NOT HEALTHY  
\_\_\_ other: \_\_\_\_\_

## EYES

\_\_\_ normal  
\_\_\_ other: \_\_\_\_\_

## EARS

\_\_\_ normal  
\_\_\_ other: \_\_\_\_\_

## NOSE

\_\_\_ normal  
\_\_\_ other: \_\_\_\_\_

## MOUTH, TEETH, GUMS

\_\_\_ normal  
\_\_\_ gingivitis  
\_\_\_ tartar build up \_\_\_\_\_  
\_\_\_ other: \_\_\_\_\_

## HEART

\_\_\_ normal  
\_\_\_ murmur  
\_\_\_ other: \_\_\_\_\_

# Up-front Timing – Training

## When to start an intake exam?

- On the phone
- At the front desk
- In the field
- BEFORE YOU TOUCH THE ANIMAL
- BEFORE YOU REMOVE FROM THE HOUSING OR TRANSPORT CARRIER
  
- Before they come in
- As they come in
- At minimum, the day they come in

# Ready, Set, Go...

- Exam before entry
- Make use of waiting time
- Vaccines on board
- Evaluation completed
- Spayed / Neutered
  
- Remember the Erie Co. example





# Recognizing Urgent Needs?

- Signs of ownership
- Tags / collars
- Microchips
- Neonates?
- Infectious disease?
- Trauma?
- Abuse? Fighting?
- Fear? Stress?
- Aggression?



# Microchips

- “Component of medical exam should include scanning multiple times at intake with a universal scanner”
- Helps find owners
- Always check before you re-chip



<http://www.ASPCApro.org/tip-of-the-week-chip-chip-hooray>

# RTO

- Efforts can start before intake
  - Return in field
  - Proactive programs
- Promote collars / ID tags for dogs AND cats
- Offer microchips
- Social media
- LOOK!

<http://www.ASPCApro.org/busting-the-cat-collar-myth>

<http://www.ASPCApro.org/rto-in-the-hands-of-facebook-fans>



## The Importance of Pet Tags

By TARA PARKER-POPE SEPTEMBER 21, 2011 11:09 AM 67 Comments



Is your dog or cat wearing a collar and tags?

Research shows that 80 percent of pet owners believe it's important that dogs and cats wear personal identification tags, but only one in three pet owners say their pets always wear them. The importance of pet tags was highlighted last week with news of [Willow, the calico cat who turned up in Manhattan](#) five years after she went missing from her Colorado home. She had been embedded with a microchip as a kitten, which carried information about her owners 1,800 miles away.



Keeping your pet collared and tagged can be critical, a new study shows.

While the story had a happy ending, veterinarians say it's also a cautionary tale about the importance of pet collars and tags.

# Every Day Counts

- Getting out of the shelter is an urgent need
- Make animals available as soon as possible
  
- Fast Tracking
- Open Selection
  
- Housing that supports behavioral needs
- Enrichment
- Open adoptions

# Fast Track

- Transition to ADC or not
- “Shelter within a shelter” for highly adoptable juveniles and adults
- Skip to the head of the line
- Intake – 1-2 weeks, then move to general population
- Prioritize “low disease” housing for fast trackers, high quality enriched housing for slow trackers



Try this at home!

[ASPCApro.org/stay](http://ASPCApro.org/stay) or <http://www.sheltermedicine.com/node/37>

# What happened next?

- Started during a period of decreased intake
- When a cat was adopted, moved up a fast track cat
- Change from moving up the next cat in line based on intake date
- Kept doing this until all fast track cats were in adoption
- Then moved over slow track cats
- The longest a slow track cat had to wait for a spot in adoption was 2 weeks
- Within 1 month all cats had a place on the adoption floor
- Moved to ADC gradually
- Have held to ADC estimates of 22 cats

# Fascinating...

- YTD (January-August):
  - 2012 cat intake = 1695, adoptions = 909
  - 2013 cat intake = 1510 (10% decrease) adoptions = 906
- Average LOS:
  - 2012 = 24.6 days      2013 = 12.6 days
- No change in:
  - policies regarding intake or adoption
  - adoption promotions
  - the foster program
  - staff hours
- Cats on medication ↓ 25%
- Current LRR = 83% (Up 5%)

# Before – 1 Cat Per Condo



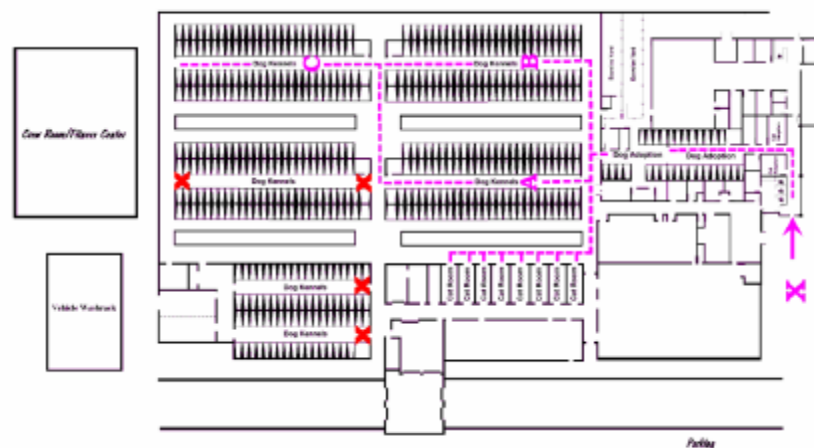


# After – 1 Cat Per 2 Condos



# Open Selection: Waiting For Adoption While Waiting For Reclaim

- Offer visibility to most pre-adoption animals
- Let the public (citizens and rescue groups) help select who is “adoptable”
- Identify priority animals for needed pre-adoption processing if you can’t get to them all
- Designate restricted area for animals considered dangerous, legal holds, treatment



Hillsborough County Animal Services,  
Tampa, Florida

# Putting The Plan Into Action

- ✓ Check microchips, ID tags and lost reports to provide every stray animal the best chance of being returned to an owner.
- ✓ If no concerns or evidence of owners / guardians are evident, make the animal available for Open Selection.
- ✓ Move Open Selection candidates to the adoption area;
- ✓ Database and paper records should make it clear that the animal is still a stray and may be reclaimed by owner within the legal holding period.
- ✓ Perform daily rounds to account for the status of each animal in the shelter each day

# How It Works

Animal ID's	Animal Info			Location Info
<b>A21153891</b> 13-9992	<b>Active</b> Available - pending stray period	<b>Petri - Cat</b> Female - Juvenile	<b>Domestic Shorthair/Mix - Orange - Tabby</b> Altered: <b>No</b> , Size: <b>Small</b> , Weight: <b>0.86 kilogram</b> Bitten: <b>No Bite History</b> , Danger: <b>No</b>	Dane County Humane Society Cat Pre-Adoptable - 76



- Medically and behaviorally healthy cats are moved straight to “adoptable” areas – OS cats
- Stage is set to “Available - pending stray”
- Pre-selection for adoption while cats are waiting through their legal hold
- Allowed to meet and interact with the public

# Adoption Hold

Adoption holds can be placed.

Adopters are informed that the animal is still within the stray holding period and that if an owner did come forward, the owner would have the first priority to reclaim their pet.

If selected:

- Adoption hold placed
- Spay / Neuter hold placed (if needed)



<u>Hold #</u>	<u>Hold Reason</u>	<u>Hold For</u>	<u>Hold Date</u>
<a href="#">1514434</a>	Spay/Neuter Hold		5/18/2012 11:01:00 AM
<a href="#">1505918</a>	Dental Hold		5/9/2012 1:46:00 PM
<a href="#">1524322</a>	Adoption Hold		5/29/2012 2:31:00 PM

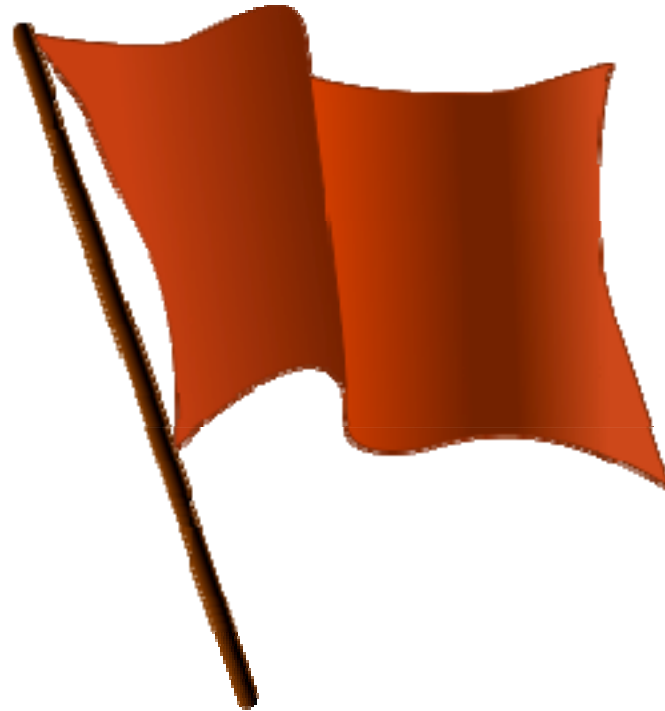
Intake about 3000 cats/year  
About 60% “stray” cats

## Results

Adoptions May - May  
1776 in 2010 -11  
2214 in 2011 -12  
2154 in 2012 -13

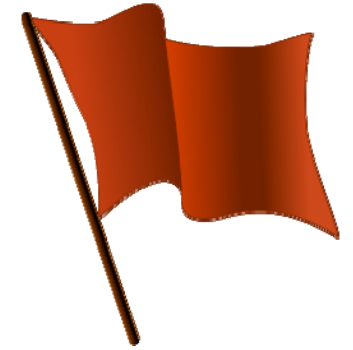
Overall Feline LR as a percent of intake  
79% in 2010  
80% in 2011  
84% in 2012

AVG. LOS to adoption  
26 in 2010  
23 days in 2011  
18 days in 2012



# Post Red Flags and Train for Response

# Medical Red Flags

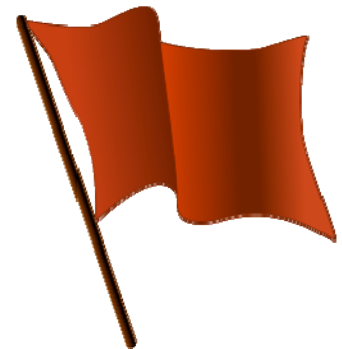


- Fever  $>106.5$  or temperature  $< 99$
- Severe dehydration
- Severe lethargy/non-responsive to stimuli
- Trouble breathing
- Seizures
- Blue, very pale or brick red gums
- Recent history of being hit by car
- Acute severe lameness or injury with bone exposed
- Major wounds or any fresh wound requiring sutures
- Injury to the eye
- Bleeding or extensive, easy bruising
- Suddenly swollen abdomen
- Cat with possible urinary blockage
- Pregnant animal in distress
- Evidence of pain, such as restlessness, vocalizing, panting or failure to bear weight on a limb, or any condition that would be expected to be painful

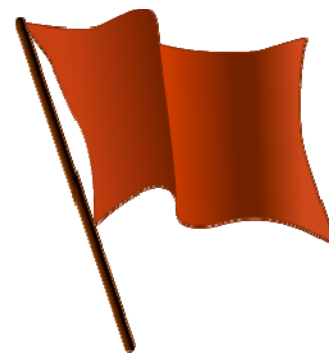


# Infectious Disease Red Flags

- Bloody or severe diarrhea
- Vomit or diarrhea with other signs of disease
- Neurologic signs
- Including eyes
- Oral ulcers with fever or swelling
- Circular patches of inflamed skin hairloss
- Dead in cage – always check for Parvo/Panleukopenia



# Behavioral Red Flags



- Trembling/shaking
- Frozen or tense/still body posture or cowering into corners/gutters etc. for more than one hour
- Pressing or facing into the corner of the enclosure
- Constant or frequent growling, hissing, or lunging at the front of the cage
- Failure to eat for more than 24 hours, with medical causes ruled out
- Efforts to escape to the point of self-injury
- Severely messing up or destroying cage
- Eliminating outside of the litter box within the shelter environment
- Stereotypic behaviors such as repetitive pacing, spinning, or lunging

# Communication / Response

What is your communication system?

M16815172	Pending	5/23/2012 11:32:00 AM	Kara Nielsen	Dane County Humane Society	Kara Nielsen	Kara Nielsen
Exam	Med Board				5/23/2012 11:29:00 AM	5/23/2012 11:29:22 AM
<b>Exam Notes</b>						
<u>Notes</u>						
5/23~ possible runny nose or congestion. chinchilla was observed rubbing his nose with his paw, but I was unable to get close enough to see if the nose was wet. has a green tag at this time.						

# Stress at Intake

“Care must be taken to minimize stress during this crucial time (the intake period) in order to minimize problems, which may delay or even prevent acclimation or adjustment to the shelter environment and prolong or intensify anxiety and mental suffering.”

- ASV Guidelines for Standards of Care in Animal Shelters

# Stress Reduction Planning

- Flow through and timing
- Prioritize shy/stressed animals; feral cats
- Keep animals moving so you do not build a population in the admit room
- Minimize the stress of watching others go through admit process



# More Stress Reduction

- Hiding boxes – cages too small?
- Alternatives:
  - Towels
  - paper bags
- New arrivals - don't wait
- Separation of species



# Testing?

- Balance resource expenditure with
  - infectious risk
  - adoption or transfer expectations
- **Consider flow through and availability plan**
- Ringworm (high risk, low cost screening)
- Parvo (high risk, if clinical signs)
- Heartworm (low risk)
- Felv/Fiv (low risk if single housing)
- Best investment after holding period?
- Available for selection during holding?
- Too much information?



# Treatment Considerations

## Prevention

- Vaccination

## Welfare response

## Emergency care

- Behavioral support
- Stabilization
- Pain medication
- Immediate transfer or euthanasia **if adequate care cannot be provided**

## ■ Minimize zoonosis

- Ringworm
- Roundworms
- Tapeworms

## ■ Minimize contagious spread

- Many pathogens
- Heartworm

## ■ Minimize environmental contamination

- Coccidia
- Ringworm
- Parvo





# Vaccination on Intake

- “Because risk of disease exposure is often high in shelters, animals must be vaccinated at or prior to intake with core vaccines” – ASV Guidelines
- Vaccinate prior to even placing in intake cage
- On intake does not mean within hours
- Train reception / admitting / intake staff
- Animal Control Officers?
- AAHA and AAFP Guidelines for shelters
- General guidelines for cats and dogs
  - Begin DHPP / FVRCP at 4 weeks
  - Revaccinate at two week intervals if under 5 months

See Virtual Consultant modules on vaccination

# Parasite Prevention and Treatment

Target:

- At risk individuals
- Broad spectrum
- Zoonotic
- Difficult to eliminate
- Especially problematic
- Synergistic with viruses
  
- Balance with resources



# Heartworm

- Early prophylactic treatment for heartworm?
- At intake?
- After holding period?
- Don't delay too long
- Preventative may treat back 2 months
- Reduces transmission opportunities



# Intake Quarantine?

- **Only when risk is higher than staying in the shelter**
- Transfers from high risk area / organization
- Signs of illness
- Susceptible animals
- Do a risk assessment to minimize need



# Ringworm: Systematic Wood's Lamp Screening



Photo by Beth Rodgers

# Recognition of Parvo

- Intake **antigen** testing of sick puppies
- Intake **antibody** (and antigen) testing for high risk puppies
- Adults less likely?
- Daily formal rounds
  - More often during outbreak
- Evaluation before cleaning
- All staff and volunteers, all the time
- Document and map test results
  - Source and shelter location
  - Time with respect to intake and vaccination



Learn more about Parvo in Dr. Newbury's Maddie's Institute webinar June 26 at 9 pm EST

[http://www.maddiesfund.org/Maddies\\_Institute/Webcasts/Evolving\\_Strategies\\_for\\_Treating\\_Parvo.html](http://www.maddiesfund.org/Maddies_Institute/Webcasts/Evolving_Strategies_for_Treating_Parvo.html)

# Parvo “Snap Test”: Is the virus there?

- False negatives
  - Variable shedding
  - Fairly uncommon in first few days of disease
- ~ 80% sensitivity for all current strains
- False positives very uncommon with Idexx brand test
- Maybe rare weak positive 3-14 days after vaccination



# Idexx Testing and 2c

- Fecal parvo ELISA SNAP test detected all current isolates including 2c
- Also detects FPV isolates from the 1960s through to current isolates
- Virus is shed sporadically and was present as early as 3 days post challenge in dogs, 5 days in cats

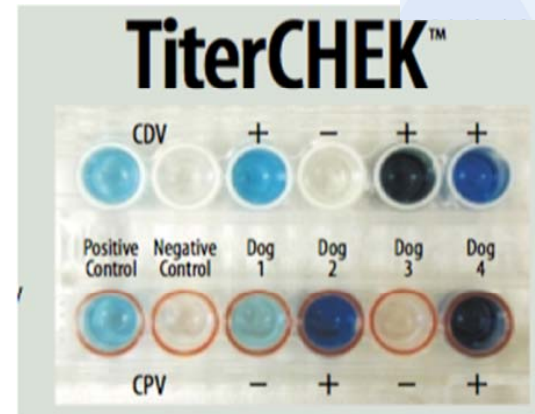
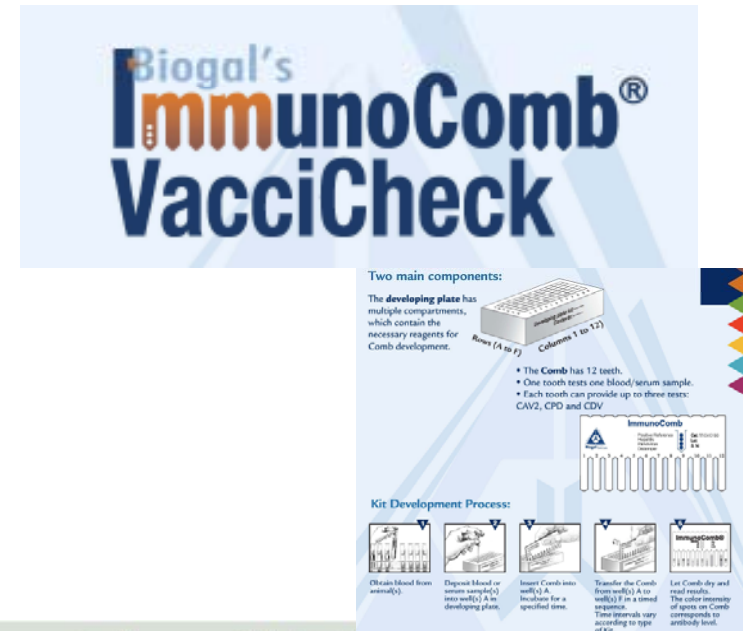
*Evaluation of a CPV-2 Fecal Parvovirus ELISA (SNAP Fecal Parvo test) from Idexx Laboratories.*

*Larson, Quesada, Mukater, Krygowska, and Schultz  
UW Madison - CRWAD*



# Antibody Testing: Is protection there?

- CDV and CPV
- ~ \$10 - \$30 per test
  - Cheaper than quarantine or euthanasia?
- Help identify at-risk dogs
  - Must be run correctly
  - Only in dogs with no clinical signs of illness
- Positive is good
  - Low risk is not no risk
  - High risk does not mean doomed



# Antibody Titers and Risk Assessment

Clinical Signs	Titer Result	Age	Risk Category
Yes	Don't test	All	High
No	Negative	< 5 months	High
No	Positive	< 5 months	Low*
No	Positive	Adults	Very Low

*\* Pups with in-house positive titers can only be considered low risk for short periods of time because MDAs are constantly declining.*

# Sample Admitting Treatments

## Dogs

### ALL > 5 months

- DA2PPv (distemper vaccine)
- Bordetella (IntraTrac III)
- Frontline
- Pyrantel Pamoate \_\_\_\_\_ cc (Strongid)
- Schedule Pyrantel Pamoate in 2 weeks
- Write weight on cage card.

### < 30 DAY RETURN

- All of the above +
- Pending Med Board "Returned Dog"

### SAAV Dogs >5months

- DA2PPv (distemper vaccine)
- Bordetella (IntraTrac III)
- Frontline
- Heartworm Preventative
- Schedule Pyrantel Pamoate in 2 weeks
- Pending Med Board "SAAV exam"
- Write weight on cage card.

### UNABLE TO ADMIT

- Place "Not admitted / Staff only" signs up and locks on BOTH of the kennel doors.
- Place the dog's information on the "Not admitted Spreadsheet"

### HAIRLOSS NOTED

- Dermatophyte Culture
- Write & highlight FUNGAL on card.
- Place "FUNGAL CULTURE" sign on BOTH sides of kennel.
- Pending Med Board: fungal check

### LIVE FLEAS

- Capstar \_\_\_\_\_
- Praziquantel injectable \_\_\_\_\_

### MED BOARD/Medication notes:

---

---

---

---

## Cats

### KITTENS < 2 weeks

- Dermatophyte Culture
- Wood's lamp + / -
- FeLV +/-
- Schedule 'Pyrantel Pamoate, kitten' in 2 weeks
- Schedule Marquis in 2 weeks
- Schedule FVRCP, kitten for 4 weeks of age
- Schedule Revolution for 4 weeks of age

### KITTENS 2 weeks – 4 weeks

- Dermatophyte Culture
- Wood's lamp + / -
- Marquis \_\_\_\_\_ uLs
- 'Pyrantel Pamoate, kitten' \_\_\_\_\_ uLs
- FeLV +/-
- Schedule Revolution in 2 weeks
- Schedule FVRCP, kitten for 4 weeks of age

### KITTENS 4 weeks – 20 weeks

- Dermatophyte Culture
- Wood's lamp + / -
- Marquis \_\_\_\_\_ uLs
- FVRCP, kitten
- Revolution 0.08mL / 0.23mL / 0.35mL
- FeLV +/-
- Schedule 'Pyrantel Pamoate, kitten' in 2 weeks

### ADULT CATS

- Dermatophyte Culture
- Wood's lamp + / -
- FVRCP
- Revolution 0.08mL / 0.23mL / 0.35mL
- Combo FeLV +/- FeLV +/-
- Schedule 'Pyrantel Pamoate' in 2 weeks \_\_\_\_\_ mL
- Senior exam if 12+ years

### COAT & SKIN

- normal
- hairloss
- flea dirt / live fleas
  - Capstar – 4 weeks and up  
0.25 tablet / 0.50 tablet
  - Praziquantel Inj. – 6 weeks and up  
0.20mL / 0.40mL
  - Revolution-Ok as early as 2 wks. IF HEALTHY
  - warm, soapy bath IF NOT HEALTHY
- other: \_\_\_\_\_

SAMPLE FELINE INTAKE SUMMARY CHECKLIST	Intake exam, vaccinations, dewormers and tests				
		AGE	0-2 wks	2-4 wks	4 wks to 20 wks
At intake:					
	Weight check	√	√	√	√
	Overall body physical exam	√	√	√	√
	FVRCP			√	√
	Pyrantel Pamoate		√		
	Revolution		if live fleas + healthy	√	√
	Marquis Paste		√	√	
	Capstar (if live fleas noted)			√	√
	Dermatophyte Culture		√	√	√
	Wood's exam	√	√	√	√
	FeLV test	√	√	√	
	FIV/FeLV combo test			√	√
	Warm bath in mild soap	if live fleas	if no Rev		

<b>SAMPLE FELINE INTAKE SUMMARY CHECKLIST</b>	<b>Intake exam, vaccinations, dewormers and tests</b>				
<b>Record:</b>	<b>AGE</b>	0-2 wks	2-4 wks	4 wks to 20 wks	over 20 wks
	Weight in kgs	√	√	√	√
	Any abnormalities noted on exam	√	√	√	√
	FVRCP, kitten			√	
	FVRCP				√
	Pyrenatel Pamoate, kitten		√		
	Revolution			√	√
	Marquis		√	√	
	Capstar (if live fleas noted)			√	√
	Dermatophyte Culture (inflammatory lesions)	√	√	√	√
	Wood's exam + results	√	√	√	√
	FelV test + results	√	√	√	
	FIV/FelV combo test + results				√

SAMPLE FELINE INTAKE SUMMARY CHECKLIST	Intake exam, vaccinations, dewormers and tests				
Schedule:	AGE	0-2 wks	2-4 wks	4 wks to 20 wks	over 20 wks
	2 weeks from time of admit (for kittens under 2 wks - schedule for 2 wks of age)				
	Pyrantel Pamoate, kitten	√		√	
	Pyrantel Pamoate				√
	Revolution		√		



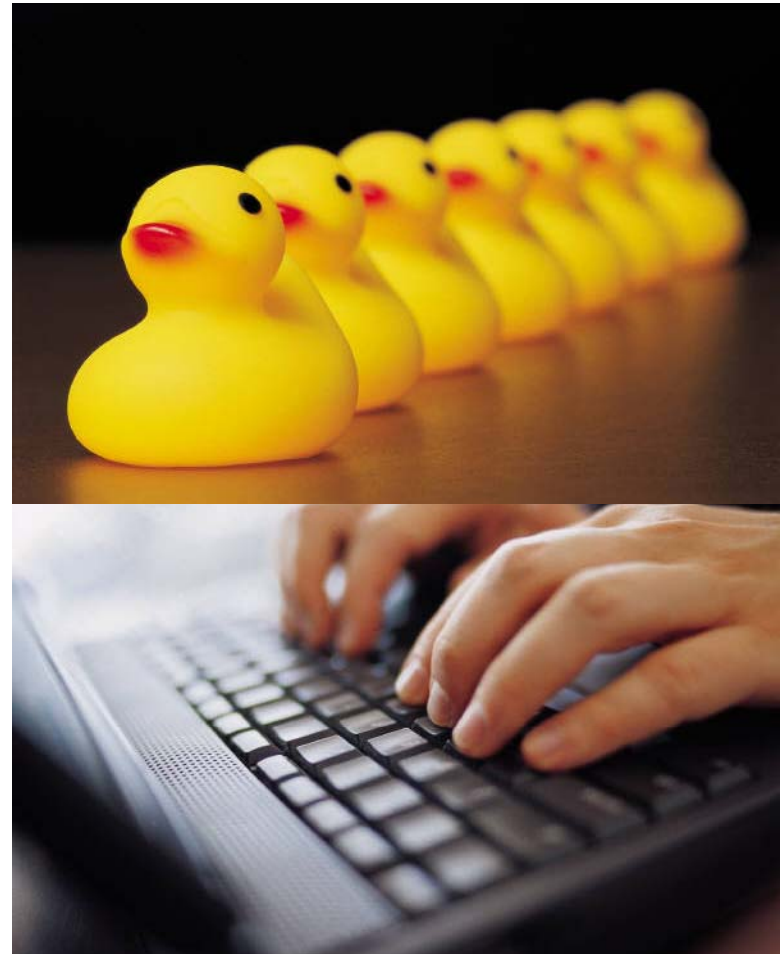
# Which Products, When?

- Numerous effective products
- Many possible combinations
- Many overlaps
- No one right answer
- Ivermectin, Revolution, Frontline, Advantage, others
- **Work with a veterinarian to develop a comprehensive plan that fits your organization**



# Record Keeping

- Paper records
- Computerized records
- Easily accessible and clear
- Legal requirements
- Necessary for care
- Data collection and evaluation







**Thanks  
!**

[www.sheltermedicine.com](http://www.sheltermedicine.com)

[www.facebook.com/sheltermedicine](https://www.facebook.com/sheltermedicine)