

Innovations in Emergency Animal Sheltering

**Presented by the
ASPCA
Field Investigations and
Response Team**



Midwestern Disaster
Resiliency Program
Don't Wait Until Disaster Strikes



© 2015 ASPCA® All Rights Reserved.

Your Presenters

Elizabeth Dominguez
Disaster Response Manager
ASPCA



Jasmine Holsinger
Shelter Manager
ASPCA



© 2015 ASPCA® All Rights Reserved.



This may have been the first animal rescue and sheltering attempt in history, but things have definitely changed!

Midwest Disaster Resiliency Program

Building Community Capacity

In 2014, the ASPCA launched a multi-year program to build disaster capacity and resiliency in ten Midwestern states – **Montana, North Dakota, South Dakota, Nebraska, Kansas, Oklahoma, Arkansas, Missouri, Iowa, and Minnesota**. Grants available from \$500 to \$5,000 and ASPCA staff for strategic counsel or trainings are all included in the program at no cost to the listed states and communities.

Funding available for:

- Training for local, state and regional audiences. Topics might include field response, emergency animal sheltering, incident command system, and slack water, swift water, rope or high angle rescue.
- Response equipment which might include items such as emergency animal sheltering supplies or a technical rescue package.
- Disaster planning assistance such as resource survey development, plan review exercises, or meeting facilitation.
- Travel to deployments with the FIR team to gain experience and encourage active membership in your animal response team.

Eligible Organizations

Organizations must be an agency or group having jurisdiction over animals in disaster for their community or state. This may include:

- Local animal control authorities
- Local, regional, and state animal response teams
- Animal humane groups
- Government agencies



Link to guidelines and application via ASPCApro

<http://www.aspcapro.org/grant/2015/03/23/midwestern-disaster-resiliency-grants>





Field Investigations and Response




2010	2015	Total Responses
<ul style="list-style-type: none"> • 7 Staff • 7 Consultants • 20 ASPCA Volunteers 	<ul style="list-style-type: none"> • 19 Staff • Over 100 Consultants • Over 450 Volunteers • Over 300 Response Partners 	<ul style="list-style-type: none"> • 2010 - 27 • 2014- 17 • 2015 – 15 • Over 5000+ animals rescued in 2014

Field Investigations & Response Team

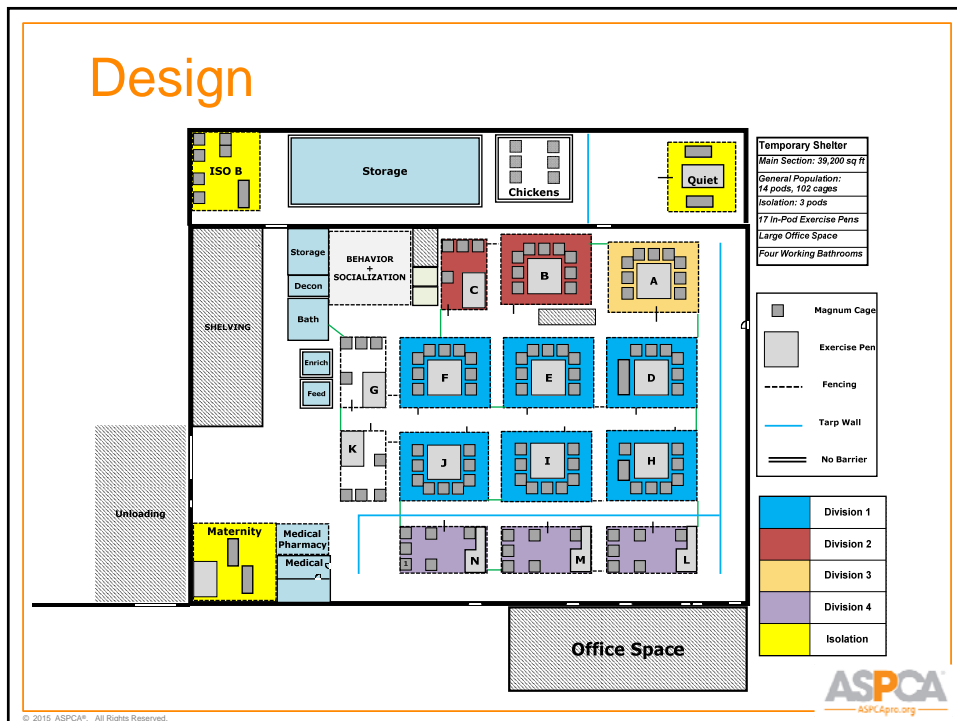



Disasters	Cruelty
<ul style="list-style-type: none"> • Floods • Hurricanes • Tornadoes • Earthquakes • Disease Outbreaks 	<ul style="list-style-type: none"> • Hoarding • Puppy Mills • Animal Fighting • Farm Animals



ASPCA.org

© 2015 ASPCA® All Rights Reserved.





Before the Build

Considerations

- Species
- Disease Control
- Air flow
- Behavioral Health
- Efficiency
- Safety
- Expansion

Sections

- Intake
- General Population
- Isolation x 2
- Maternity/Nursery
- Quiet Area
- Medical
- Medical Exams
- Storage
- Decon
- Etc.

Rise of the “Pod”

- Mini-Shelter
- Any size
- Dedicated equipment
- Dedicated personnel
- PPE
- Behavioral Health
- Disease Control
- Additional security



ASPCA
ASPCA.org





Personnel



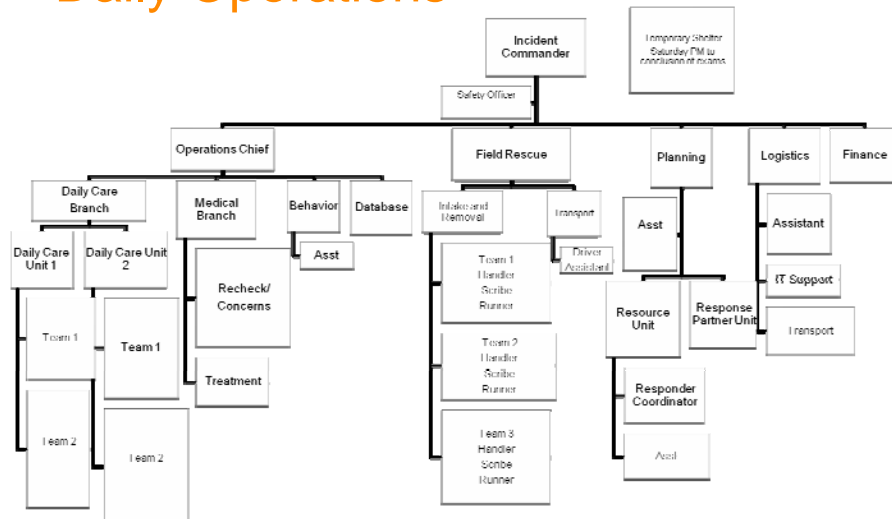
Plan It Out



ASPCA
ASPCA.org

© 2015 ASPCA®. All Rights Reserved.

Daily Operations



ASPCA
ASPCA.org

© 2015 ASPCA®. All Rights Reserved.

Who do you need?

- What roles to fill?
 - Shelter Manager
 - Ward Leads, Handlers
 - Medical Lead, Technicians
 - Logistics, Facilities, Decon
 - Behaviorist
 - Resource Unit
 - Reunification/Placement



© 2015 ASPCA® All Rights Reserved.

Where to get them?



- Consultants
- Partner Agencies
- Volunteers
- Temporary Labor?



© 2015 ASPCA® All Rights Reserved.

Volunteers



© 2015 ASPCA® All Rights Reserved.

Temporary Labor

- Local
- Inexpensive
- “Blank slate”
- Consistency
- Management



© 2015 ASPCA® All Rights Reserved.

Changing of the Guard



- What is a transition?
- Write it down
- Consistency is key!



Transitions

- Responsibilities
- Daily Schedule
- Protocols
- Ongoing projects
- Upcoming projects
- Any notes



Personnel Training



ASPCA
ASPCA.org

Orientation and Training

Orientation

- Overview of the operation
- Code of conduct
- Basic ICS
- Who's who?
- Tour
- Questions

JITT

- More in depth look at role
- Safety
- Hands-on training from Shelter Lead
- Assigned to shadow

ASPCA
ASPCA.org

Protocols and Job Descriptions

Protocols

- Admissions
- Cage Cleaning
- Isolation Cleaning
- Feeding
- Dishwashing
- Decon
- Handling
- Loose Dog
- Animal Movement

Job Descriptions

- Shelter Lead
- Floor Lead
- Daily Care Responder
- Designated Handler
- Exercise Coordinator



© 2015 ASPCA® All Rights Reserved.

Protocols

1.	General Recommendations <ul style="list-style-type: none"> a. Sanitize dishes with a cleaning and disinfecting step – washing alone or Accel soaking alone are not enough. Thorough rinsing and drying are also important steps.
2.	Removal of Dirty Dishes <ul style="list-style-type: none"> a. Dirty water bowls should be removed from cages and collected to take together to the dishwashing area. b. All organic material should be emptied into the garbage, and excessively soiled items scraped off as well as possible.
3.	Cleaning Dishes <ul style="list-style-type: none"> a. Add an adequate amount of antibacterial dishwashing liquid to hot water. b. Wearing rubber gloves, scrub dishes thoroughly in the hot soapy water with a scrub brush. Soak heavily soiled dishes or pans prior to scrubbing. c. Thoroughly rinse detergent off the dishes. d. Soak dishes in a tub filled with a 1:64 (1/4 Cup per Gallon) let soak for 5 minutes. <i>*Goggles and gloves must be worn when mixing Accel solution.</i> e. Rinse dishes with clean water and allow dishes to air dry in a clean area. f. Remember if a large number of dishes are washed that it may be necessary to drain the dirty water, and replace occasionally with new hot soapy water.
4.	Equipment Requirements <ul style="list-style-type: none"> a. Antibacterial dishwashing liquid, Accel, measuring cup for properly mixing Accel, scrub brush, gloves, goggles, water source and containers/sinks.



© 2015 ASPCA® All Rights Reserved.

Flow Charts

Spot Cleaning



© 2015 ASPCA® All Rights Reserved.

Admissions



The Team
Identification
Triage/Vaccinate
Location
Inventory
Disaster vs. Cruelty



© 2015 ASPCA® All Rights Reserved.

Medical

- Shelter Vet
 - If no shelter vet, consult with one. Create protocols.
- Per diem vets may or may not have shelter medicine background
- May not be as experienced with infectious disease in a herd environment



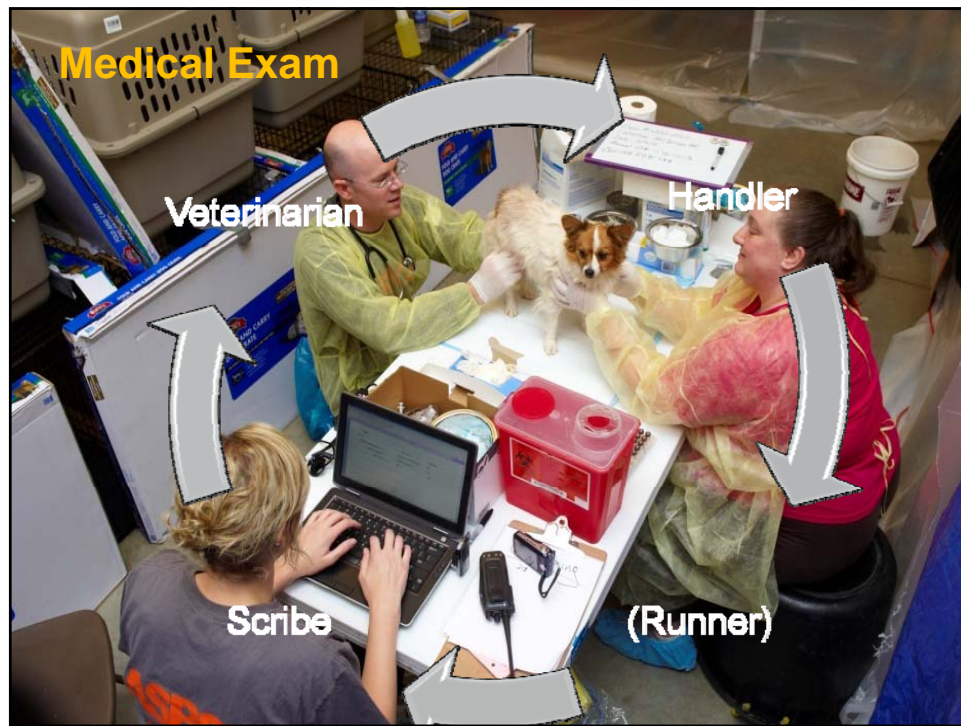
© 2015 ASPCA® All Rights Reserved.

Medical Teams

- Intake teams
 - Forensic medical exams
 - Routine intake exams
- Ongoing care
 - Daily vet may not be needed
 - Daily Care eyes and ears
 - Medical Concern Boards

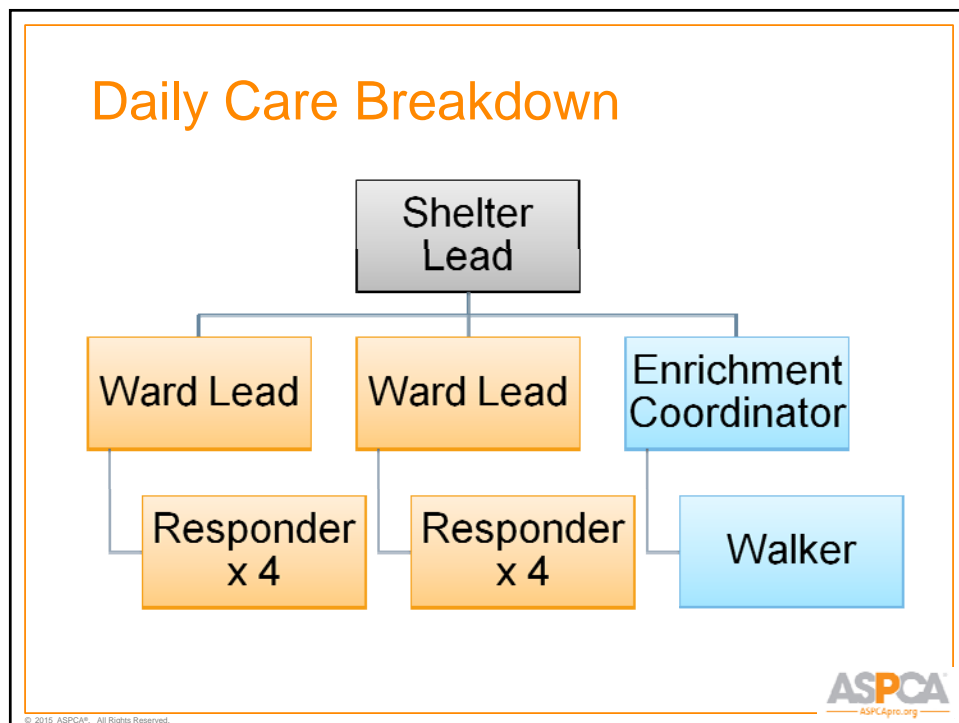
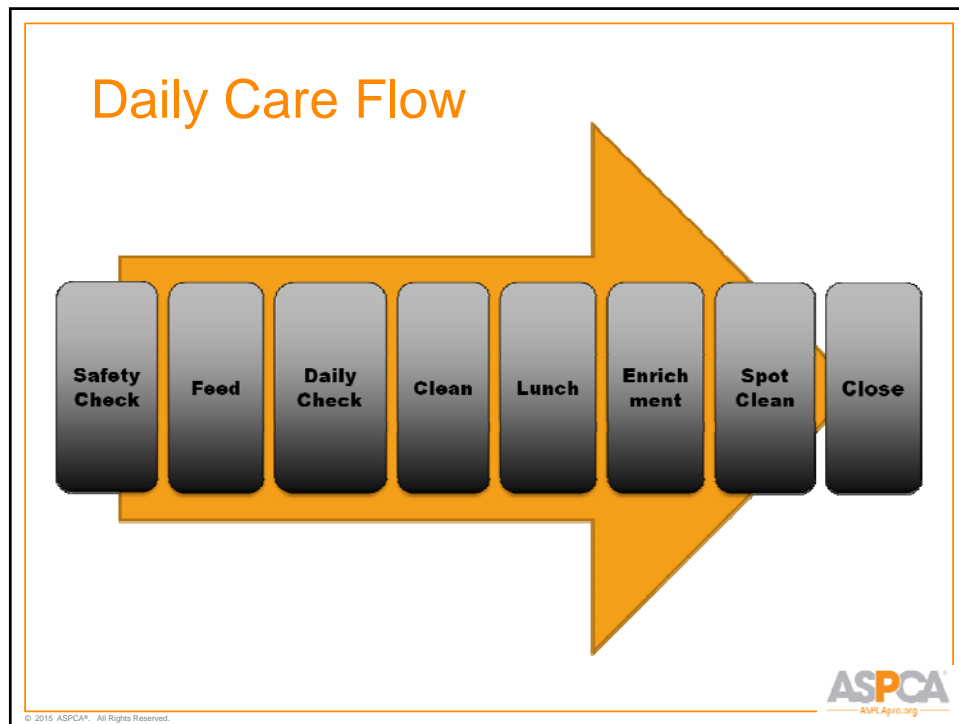


© 2015 ASPCA® All Rights Reserved.



Daily Operations





Daily Monitoring



- Cage Cards
- Behavior Cards
- Signage
- Daily Observation Sheets
- Medical and Behavior Concern Boards



© 2015 ASPCA® All Rights Reserved.

Daily Observations

- Twice a day monitoring
- Tracking
- Easy to forget, but critical

DAILY CARE OBSERVATION FORM ID# _____

DATE	TIME	AM	PM	AM	PM	AM	PM	AM	PM	AM	PM	AM	PM	AM	PM
INITIALS															
APETITE															
Good															
Average															
Reducing															
Not eating															
STOOL															
Normal															
Loose															
Constipated															
Bloody															
None															
URINE															
Normal															
Cloudy															
Strong odor															
Bloody															
Straining															
None															
VOMITING															
Food															
Bile															
Blood															
SWELLING															
Chest															
Abdomen															
Extremities															
COUGHING															
Dry/Coughing															
Wet															
Consistent															
Intermittent															
EYES															
Clear Discharge															
Purulent															
Red/Irritated															
Swollen															

Comments: _____



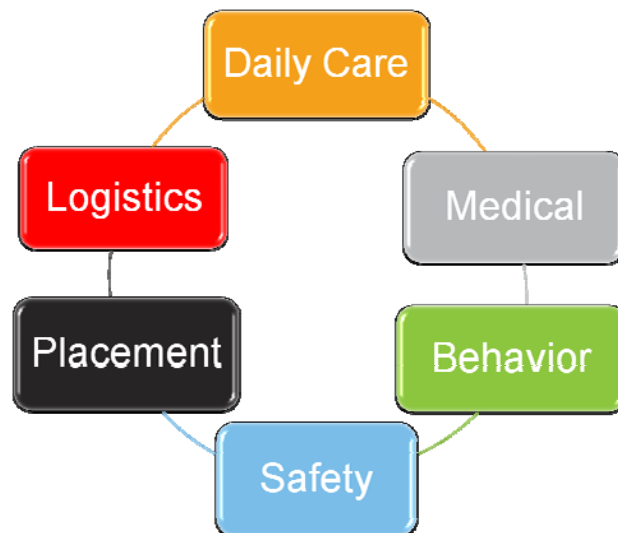
© 2015 ASPCA® All Rights Reserved.

Cleaning and Disinfecting

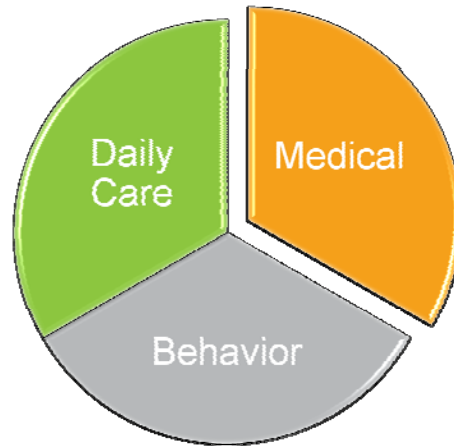
- Quarantine Period
- Biosecurity/PPE
- Cleaning vs Disinfecting
- Disinfectant
- Disease Control
- Isolation/Quarantine Areas
- Efficiency



Command



Sheltering Decisions



Enrichment



Exercise

- Walking
- Exercise Pens
- Toys
- Engage



ASPCA
ASPCA.org

© 2015 ASPCA® All Rights Reserved.

Considerations

- Species
- Outdoor Exercise Areas
- Indoor Exercise Areas
- Changing Environment
- Puzzles
- Manners training
- Playgroups



ASPCA
ASPCA.org

© 2015 ASPCA® All Rights Reserved.

Exercise Pens



ASPCA
ASPCA.org

© 2015 ASPCA® All Rights Reserved.

Enrichment Schedule

Sun.	Mon.	Tues.	Wed.	Thurs.	Fri.	Sat.
Playtime: ALL PODS	Playtime: ALL PODS	Playtime: ALL PODS	Playtime: ALL PODS	Playtime: ALL PODS	Playtime: ALL PODS	Playtime: ALL PODS
Pupsicles: Pods A, C, D	Pupsicles: Pods M, N, O, RW Iso	Pupsicles: Pods I, J, K, L, Maternity	Pupsicles: Pods E, F, G, H	Pupsicles: Pods A, C, D	Pupsicles: Pods M, N, O, RW Iso	Pupsicles: Pods I, J, K, L, Maternity
Kongs: Pods E, F, G, H	Kongs: Pods A, C, D	Kongs: Pods M, N, O, RW Iso	Kongs: Pods I, J, K, L, Maternity	Kongs: Pods E, F, G, H	Kongs: Pods A, C, D	Kongs: Pods M, N, O, RW Iso
Wobblers: Pods I, J, K, L, Maternity	Wobblers: Pods E, F, G, H	Wobblers: Pods A, C, D	Wobblers: Pods M, N, O, RW Iso	Wobblers: Pods I, J, K, L, Maternity	Wobblers: Pods E, F, G, H	Wobblers: Pods A, C, D
Chews: ALL PODS	Chews: ALL PODS	Chews: ALL PODS	Chews: ALL PODS	Chews: ALL PODS	Chews: ALL PODS	Chews: ALL PODS
Scent: Pods M, N, O, RW Iso	Scent: Pods I, J, K, L, Maternity	Scent: Pods E, F, G, H	Scent: Pods A, C, D	Scent: Pods M, N, O, RW Iso	Scent: Pods I, J, K, L, Maternity	Scent: Pods E, F, G, H

ASPCA
ASPCA.org

© 2015 ASPCA® All Rights Reserved.





Skills and Manners Training

Manners & Skills

Provide every dog with a dog, if

Crate Training



Four on Floor for Leash



Wait for dog to have all feet on the floor ANY time she jumps up

Sit for Leash



Wait for dog to sit ANY time she stands or jumps up

Wait at Gate



Gentle close the gate and wait for dog to sit ANY time she stands or jumps up

- Training at every interaction
- Species/age/size specific
- Behavior implements and instructs responders to keep consistency in training

Placement

- Start on day one
- Placement
 - Who will take them?
 - Adoption Event?
- Transfers
- Fosters
- Showcase



© 2015 ASPCA® All Rights Reserved.

March 2012 – June 2014 Sheltering

Operation	Month/Year	# of Days	# of Animals
FL Seizure	March 2012	201 Days	692
NY Seizure	June 2012	78 Days	56
Hurricane Sandy	November 2012	77 Days	279
MO Seizure	March 2013	130 Days	115
MI Seizure	May 2013	7 Days	169
OK Tornado	May 2013	10 Days	150
IN Seizure	July 2013	12 Days	93
AL Seizure	August 2013	421 Days	324
WA Seizure	December 2013	31 Days	63
KY Seizure	January 2014	15 Days	44
NY Seizure	February 2014	63 Days	4018
VA Seizure	May 2014	29 Days	588
	Averages:	89.5 Days	549



© 2015 ASPCA® All Rights Reserved.

Questions?

Jasmine Holsinger
Shelter Manager

Jasmine.holsinger@aspca.org

Elizabeth Serca-Dominguez
Disaster Response Manager

Elizabeth.dominguez@aspca.org



© 2015 ASPCA® All Rights Reserved.

Related ASPCApro Resources

Field Investigations and Response Webinar Series

including

Fundamentals of Emergency Sheltering

aspcapro.org/FIR

**Field Investigations and Response
section on ASPCApro**

<http://aspcapro.org/field-investigations-and-response>



© 2015 ASPCA® All Rights Reserved.