

Become an ASPCA Field Investigations & Response Team Volunteer



Together we can
SAVE MORE LIVES

Your Presenters

Gina Manke
Responder Manager



Kathryn Destreza
Director of Investigations



Mission



Bringing vital skill sets to rescue animals from life-threatening situations throughout the country and provide them with the essential care they need



Field Investigations & Response (FIR)

Investigations

Blood Sports

Disaster
Response

Shelter
Medicine

Veterinary
Forensics

Response
Partner
Program

COMPONENTS OF AN OPERATION

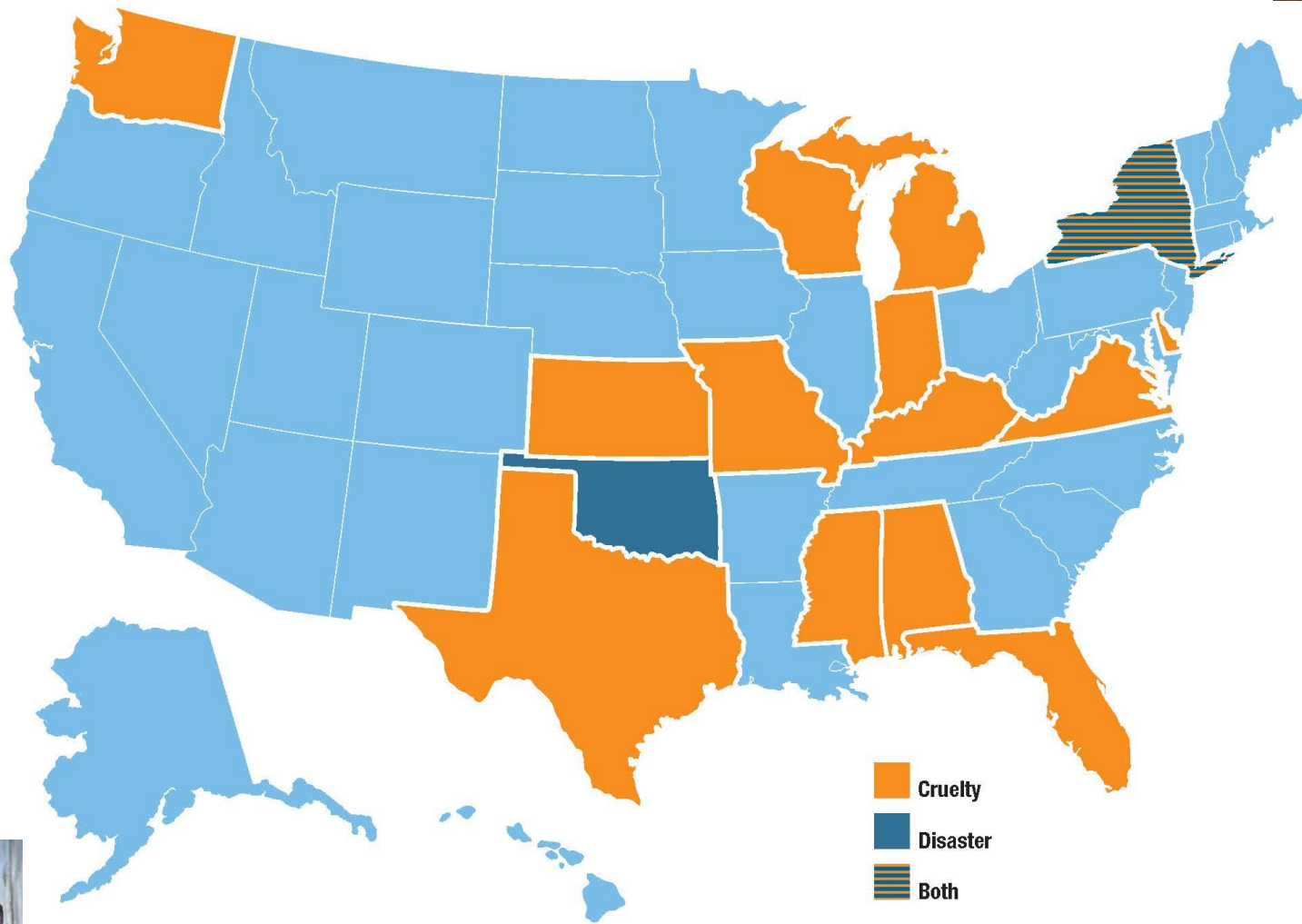


**Field
Rescue**

Sheltering

**Placement
and
Transport**

ASPCA Main FIR Deployments 2012–2014



RESPONDER ROLES

FIR RESPONDERS

Daily Care

Animal
Medical
Teams

Animal
Handlers

Investigations

Logistics

Safety
Officer

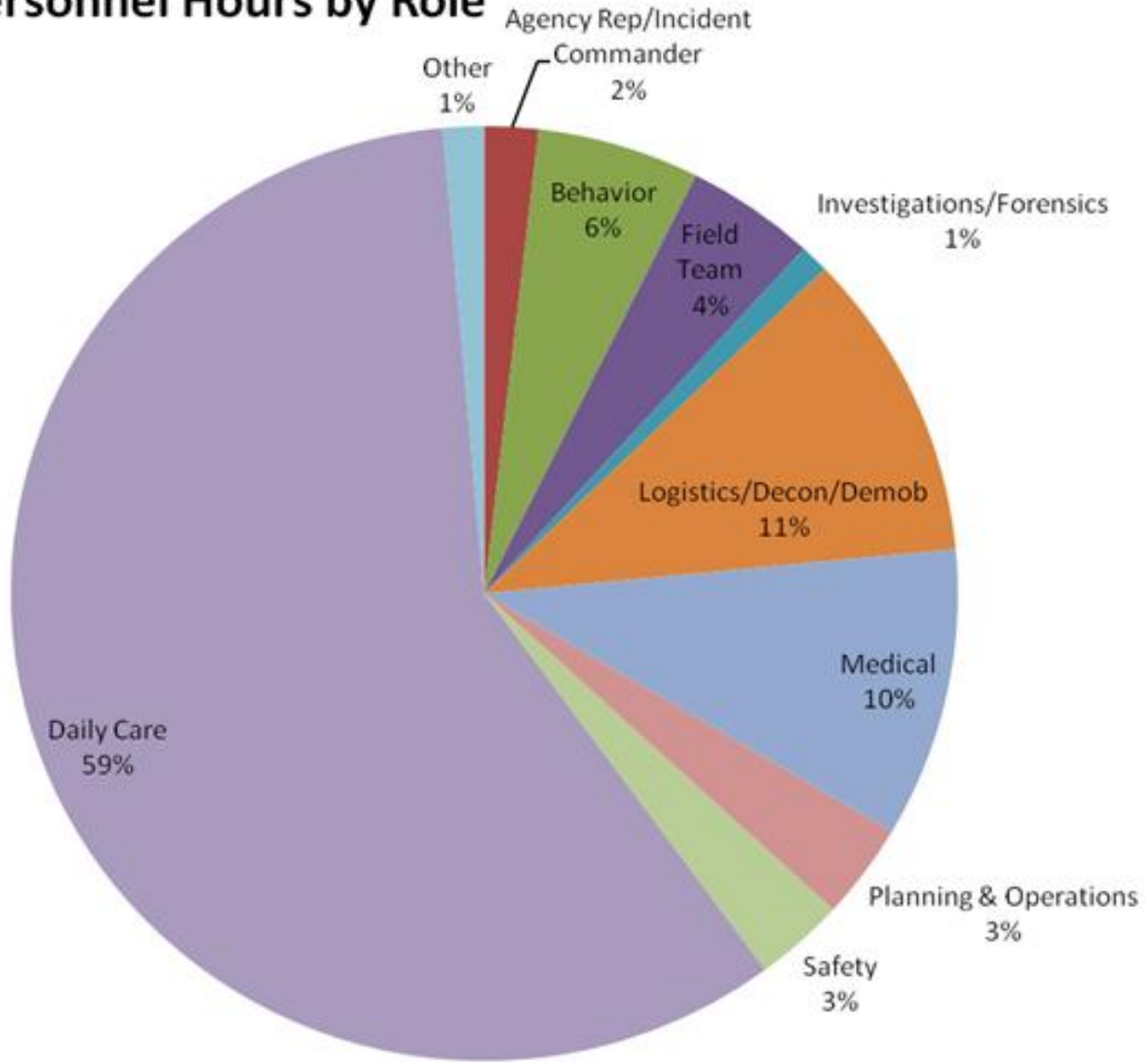
Admin
Support

Technical
Rescue



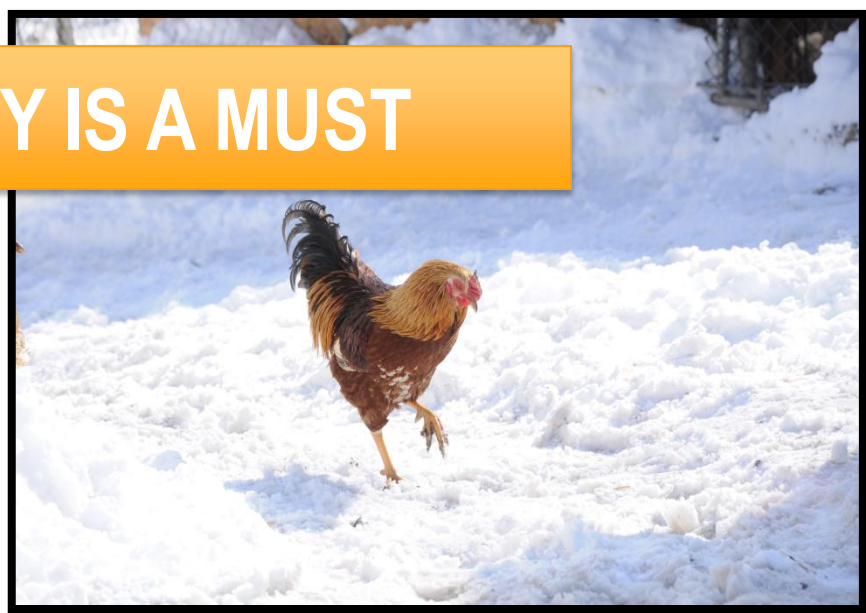
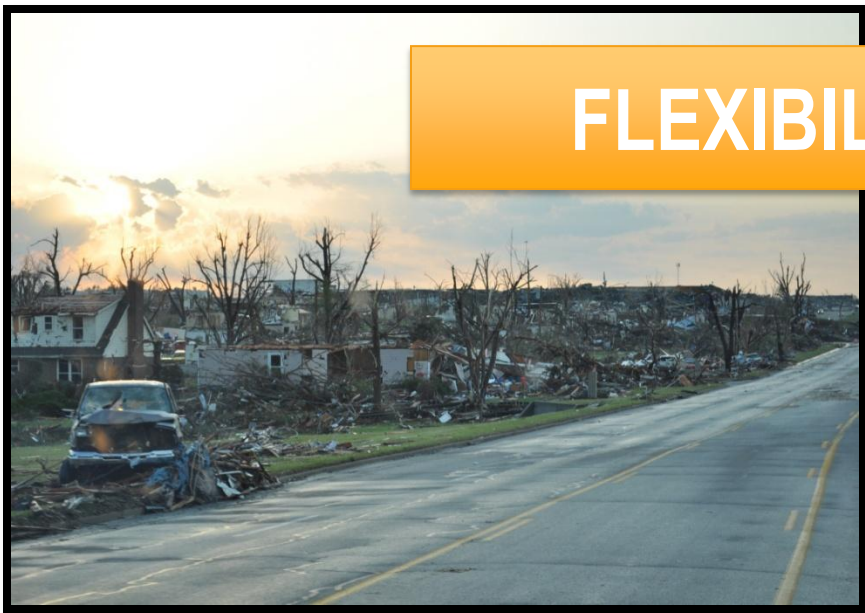


2014 FIR Personnel Hours by Role



WHAT TO EXPECT?

FLEXIBILITY IS A MUST



Long Hours

Harsh Environment

Sparse Accommodations

Physical Demands

Mental and Emotional Demands



Networking

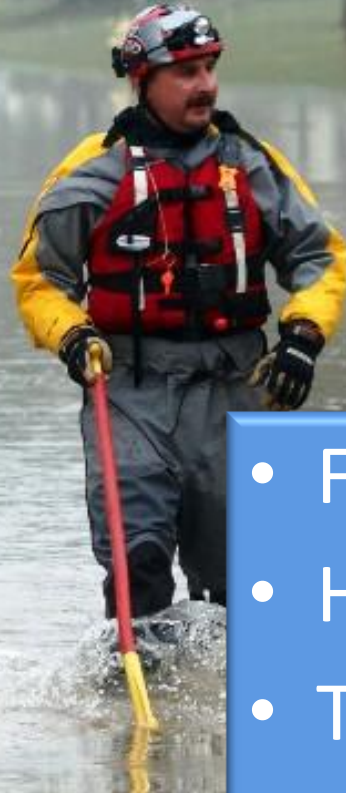
Hands on
Experience
& Training

ASPCA Best
Practices

Life
Changing
Experience

TYPES OF DEPLOYMENTS

Disasters



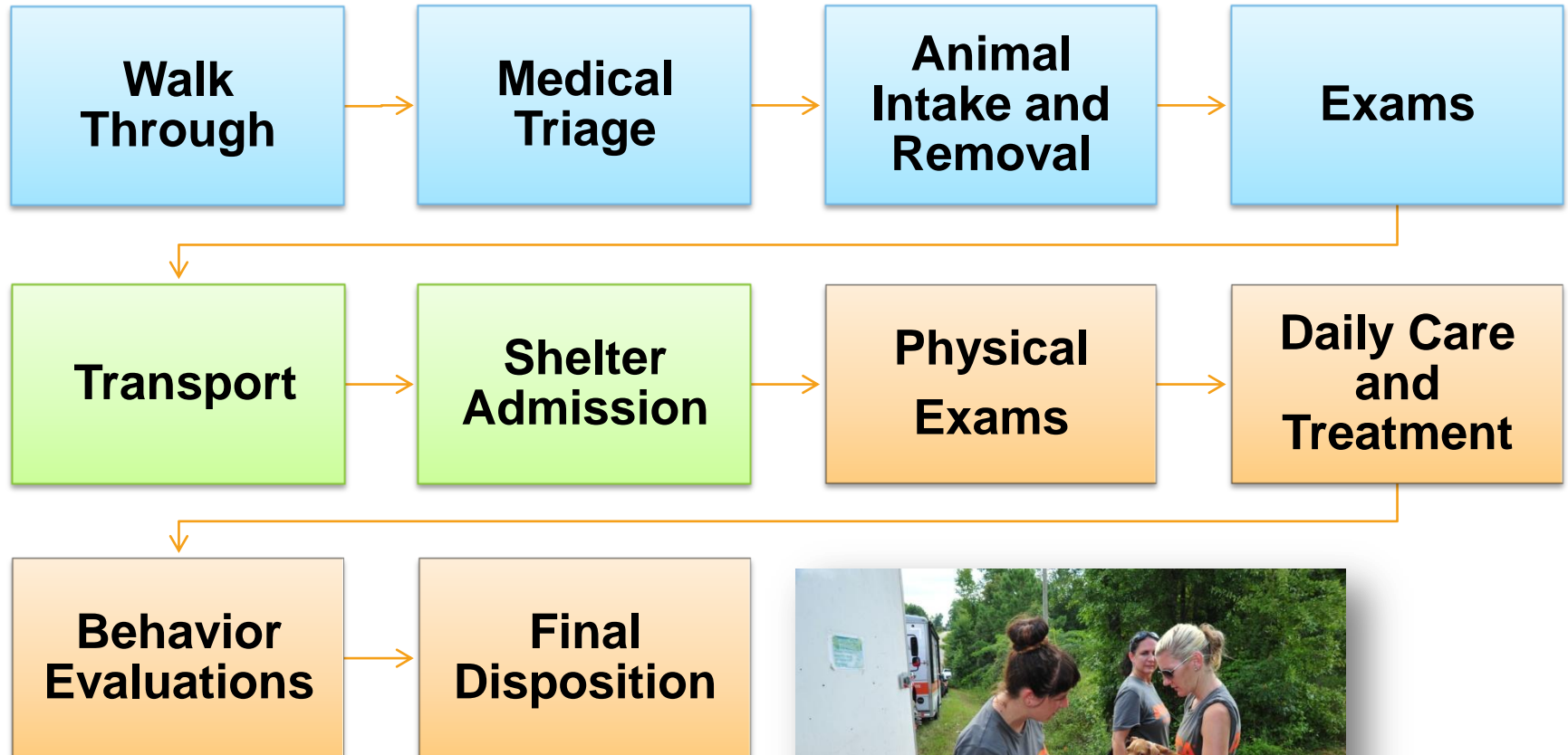
- Floods
- Hurricanes
- Tornadoes
- Earthquakes
- Wildfires
- Disease Outbreaks

Cruelty

- Puppy Mills
- Hoarders
- Animal fighting
- Other Cruelty/Neglect



PROCESS



CASE REVIEW: BRONX DOG FIGHTING OP



Overview

Seizure &
Evidence
Collection

Temporary
Shelter: Medical,
Daily Care,
Behavioral
Enrichment

Outcomes

Placement
Success
Stories

Criminal
Case
Update

CASE REVIEW: OVERVIEW

Collaboration

- ASPCA
- NYPD
- Bronx Prosecutor's Office

Investigation

- NYPD undercover
- 18 months
- ASPCA expert support

Seizure

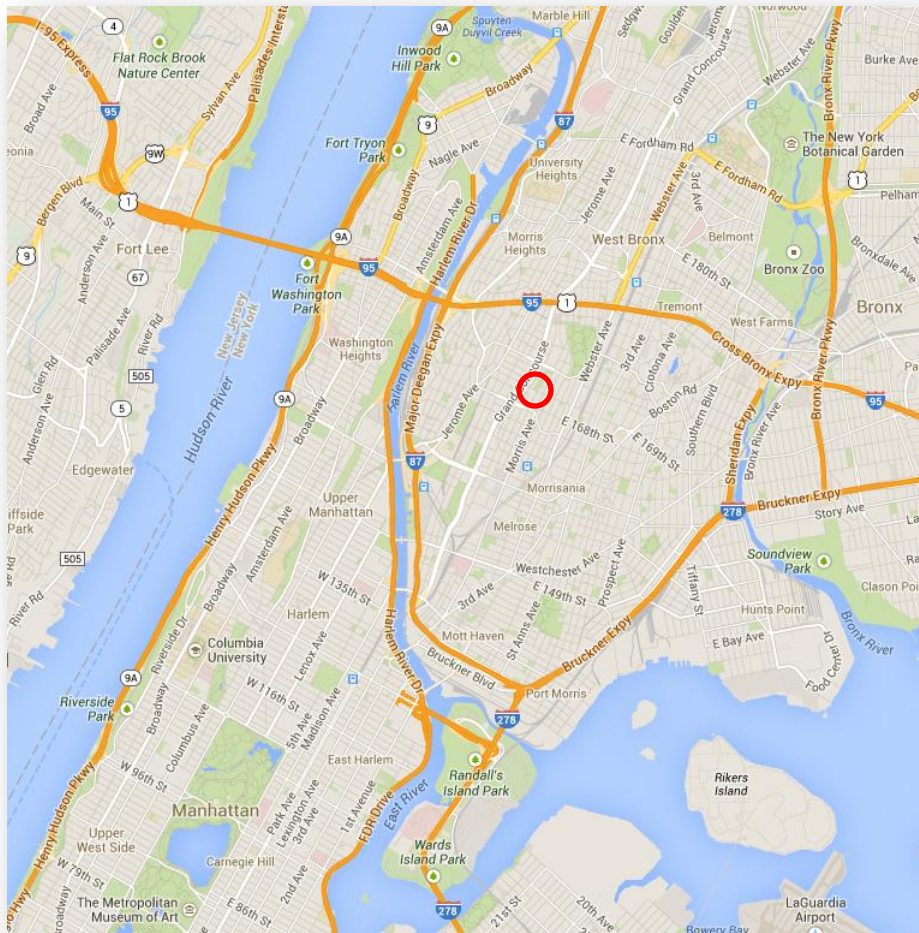
- Months of planning
- June 21, 2012
- ASPCA full range of services

Legal

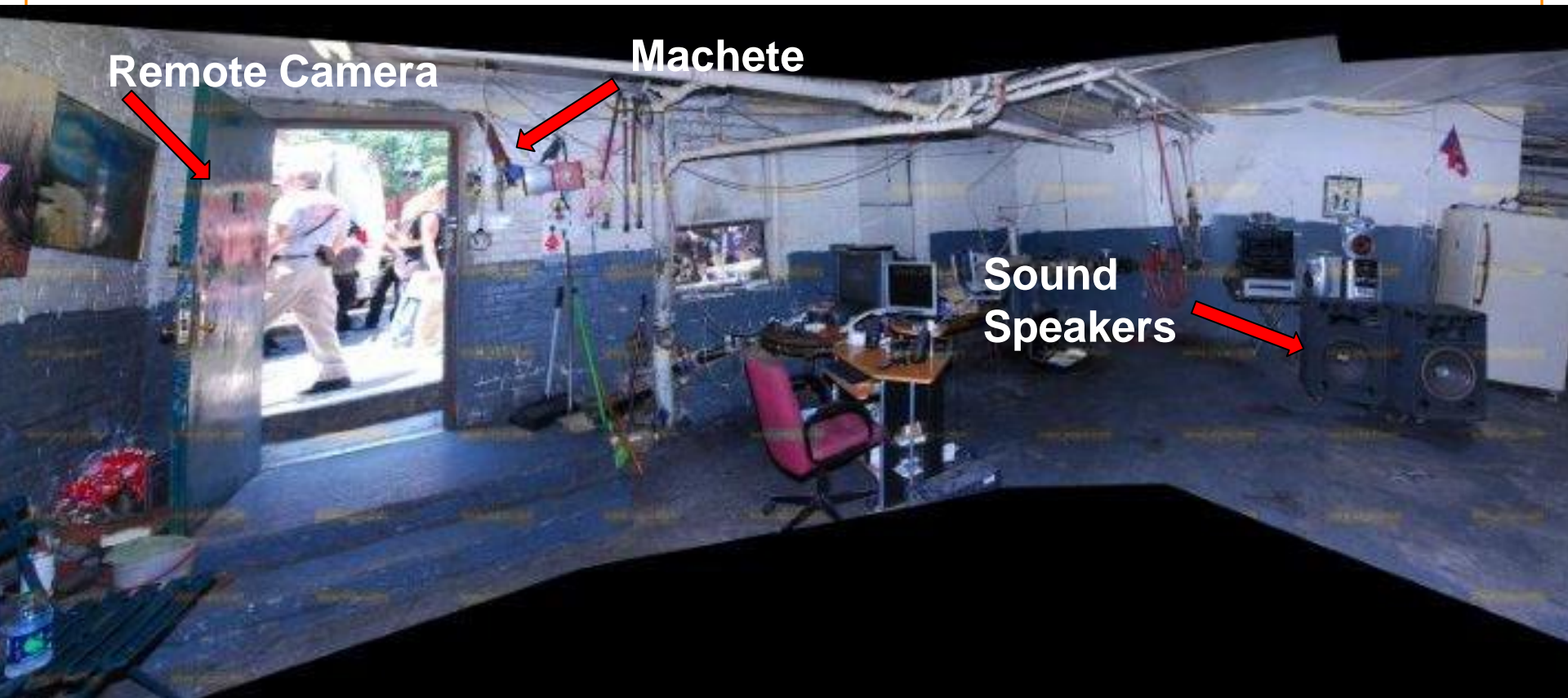
- Bronx Vice Squad
- Elizabeth Brandler, Esq



CASE REVIEW: CONCOURSE, BX



CASE REVIEW: SEIZURE & EVIDENCE COLLECTION





CASE REVIEW: CRIME SCENE

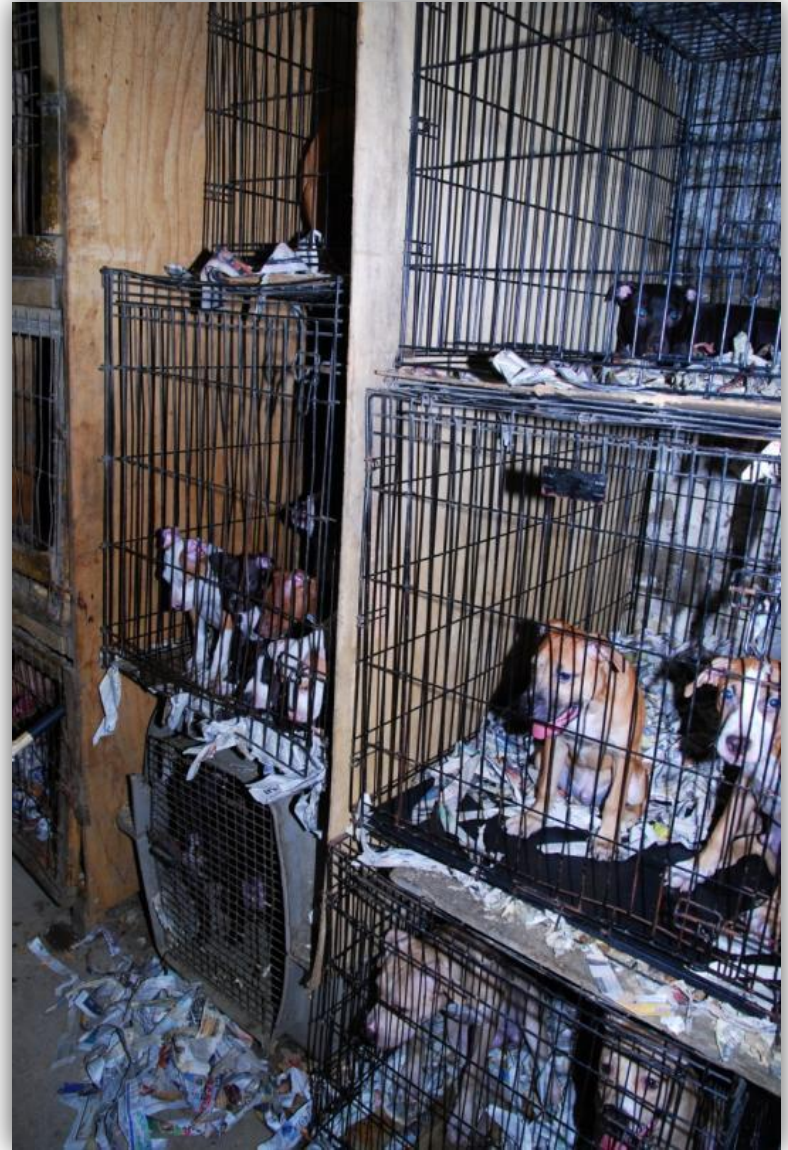
The Environment

- Dark basement with poor ventilation
- Confined
- Only taken out to train or fight
- Ammonia levels



The Dogs

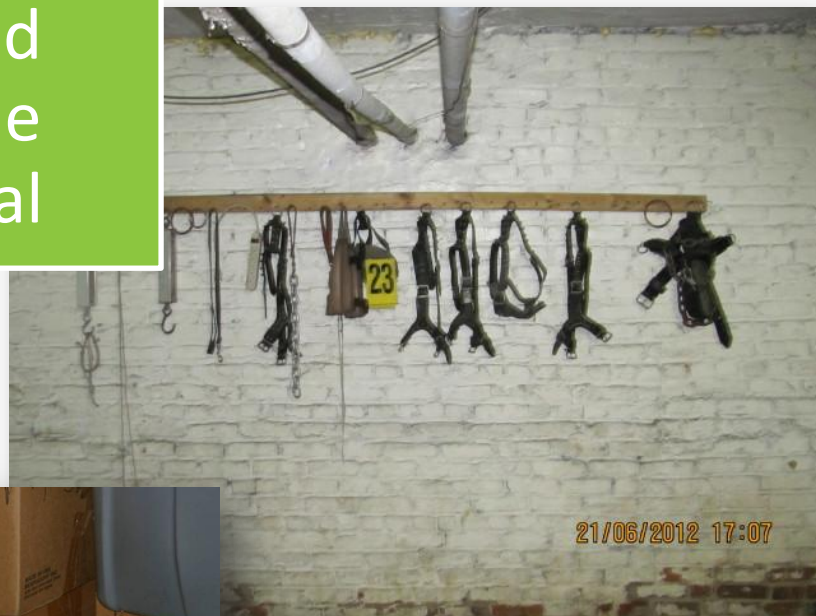
- 54 dogs: puppies and adults
- Covered in fresh wounds and old scars
- Some with massive trauma



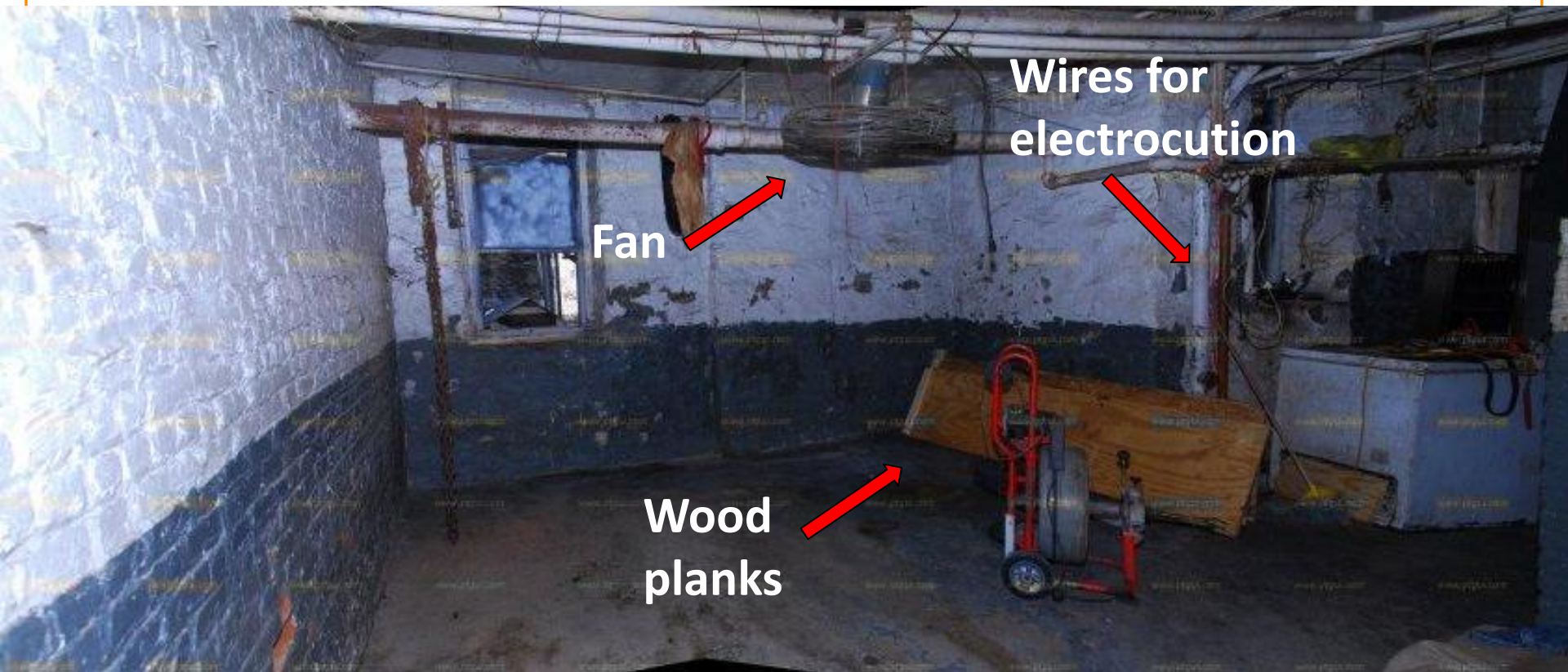
Evidence
Collection

Forensic
Analysis

Safe and
Humane
Removal



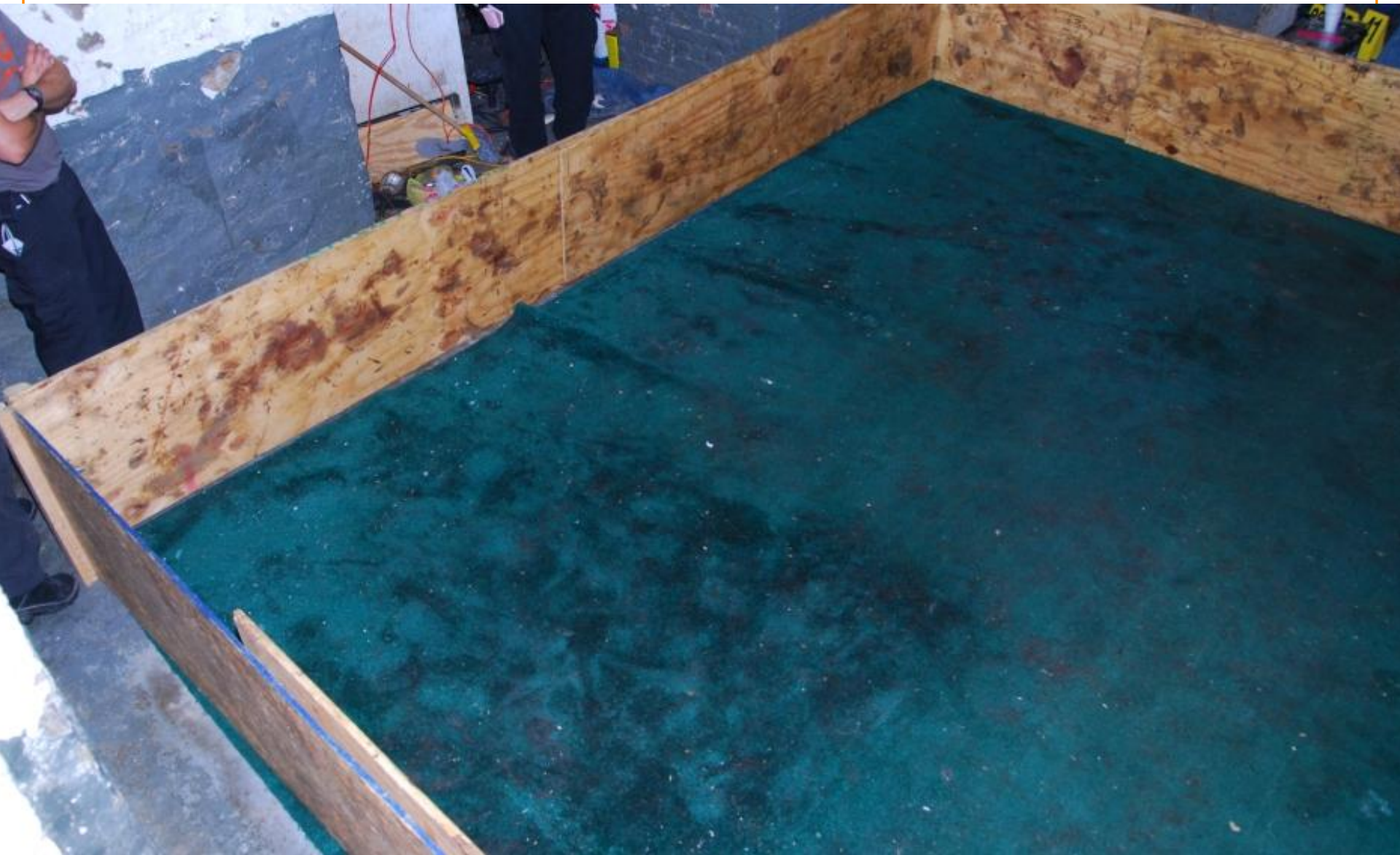
CASE REVIEW: FIGHTING PIT



Wires for electrocution

Fan

Wood planks



CASE REVIEW: FORENSIC ANALYSIS



CASE REVIEW: TEMPORARY SHELTER



Forensic Exams

- Add to body of evidence
- Scars
- Customized treatment plans



31

21/06/2012 17:03



Daily Care

118 Responders
over 88 days

Enrichment

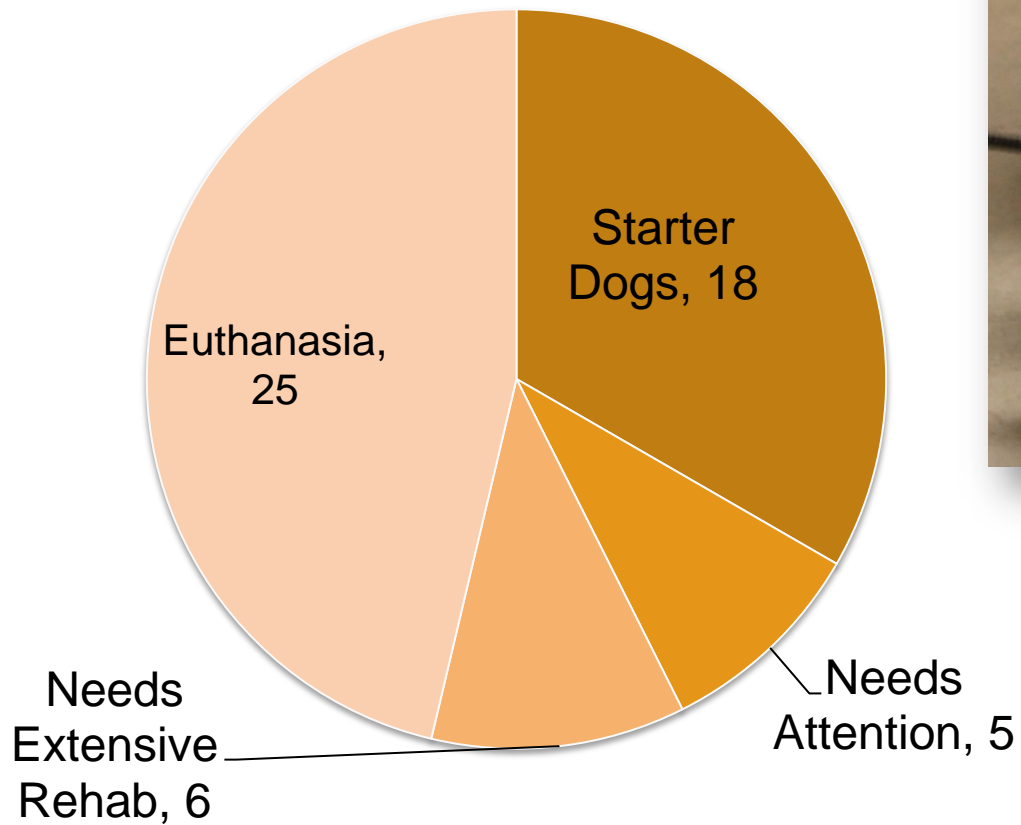
Walks, toys and
agility

Medical

High quality
diagnostics and
treatment



CASE REVIEW: BEHAVIOR EVALUATIONS



CASE REVIEW: PLACEMENT

Placement with Response Partners

St. Hubert's - 10

Columbia Greene - 8

Charles Henderson Rescue - 4

ASPCA Adoption Center - 3

ARL New Hampshire - 2

Glen Wild Animal Rescue - 2

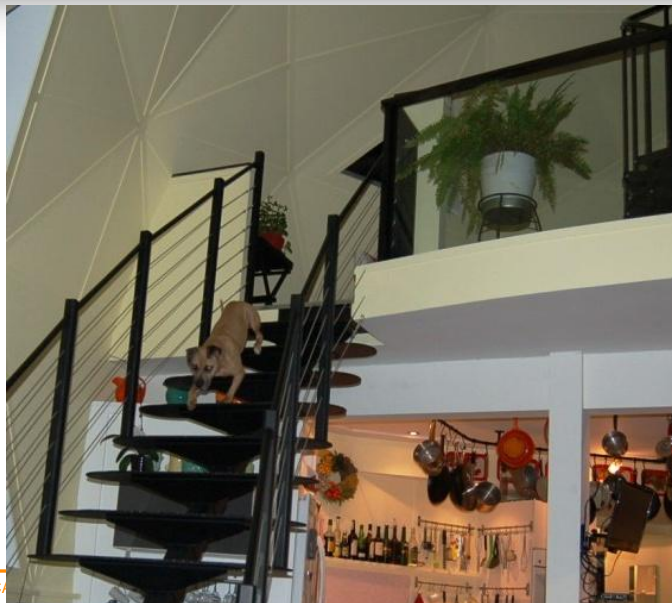
The Animal Support Project - 1

Detection Dog School - 1

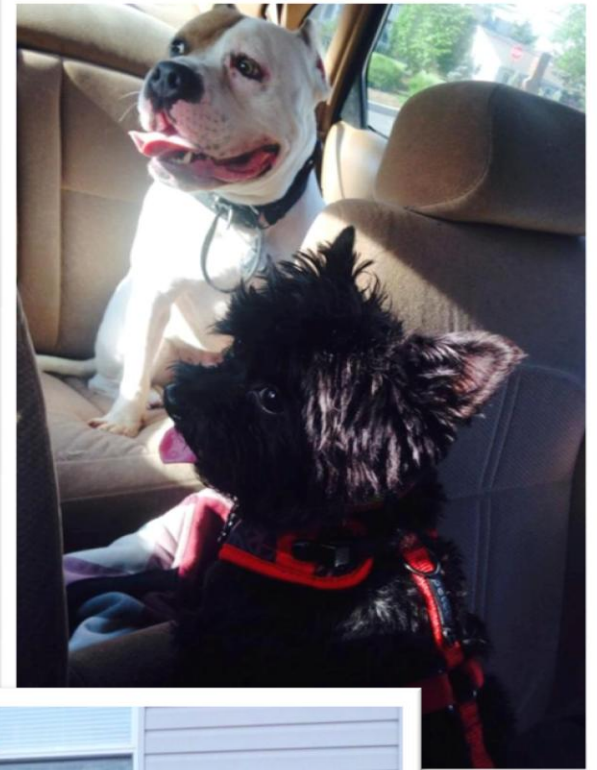
South Hampton - 1



CASE REVIEW: HAPPY TAILS



Mona Lisa



CASE REVIEW: CASE UPDATE



67 counts: 50 misdemeanors, 17 felonies

Sentenced to 1-3 years

Served 1 year

Forfeited \$5,000

RESPONDER APPLICATION PROCESS AND DEPLOYMENT LOGISTICS

SIGNING UP AND DEPLOYING WITH FIR



Simple application process to learn about you and match your skills with the best role.

ASPCA Webinars & FEMA Training to prepare you before you deploy

Coordination & Communication

On the ground orientation & training

Support

WHAT HAPPENS AFTER I SIGN UP?

Acceptance and Deployment is Not Guaranteed

4-6 Week
Application
Processing

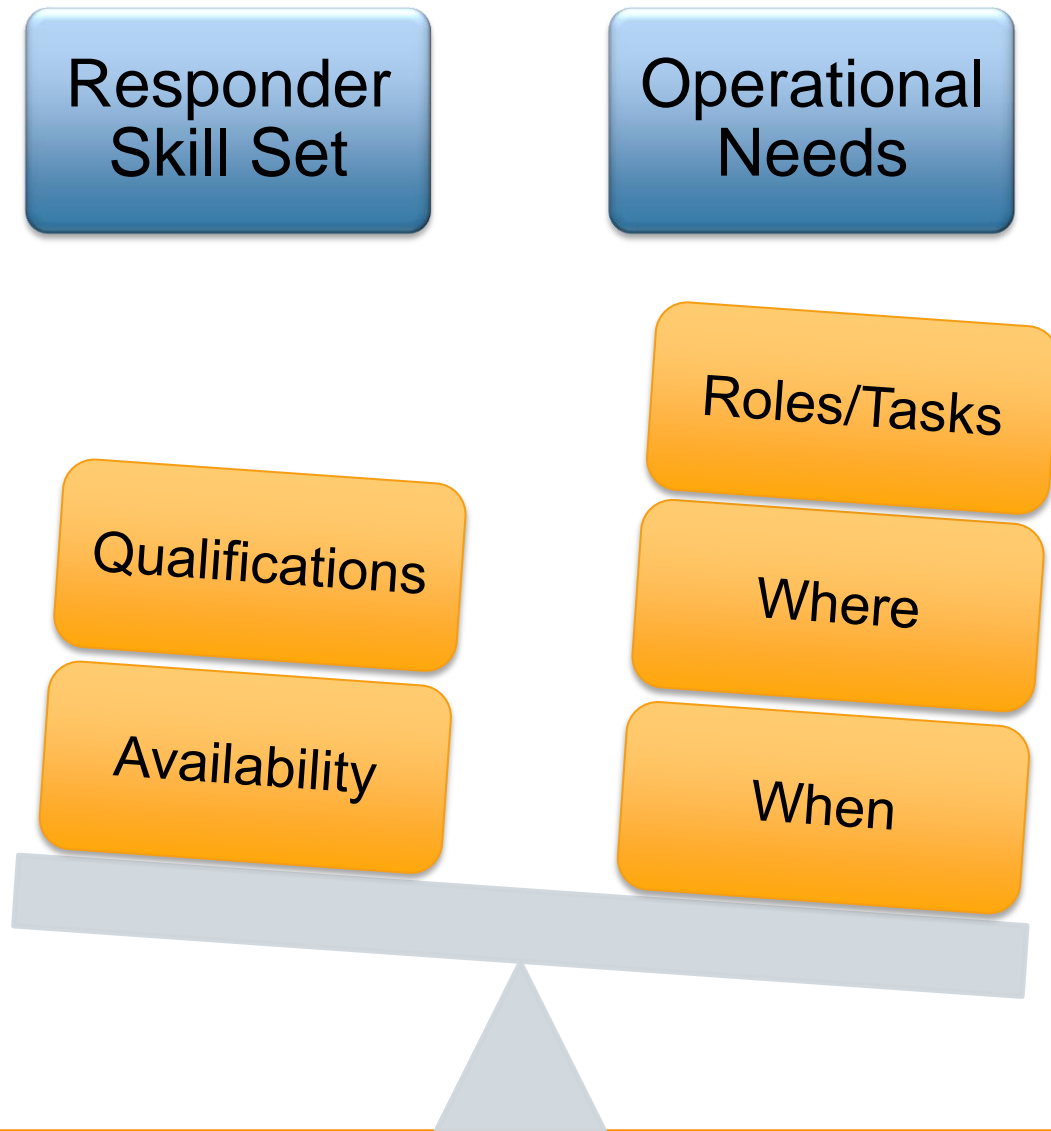
If approved,
you will be
added to our
Volunteer
Database

Active
Volunteers
Receive Email
Notifications

Availability
Surveys and
Opportunities
to Volunteer

Selection for
Volunteer
Deployment

HOW DO RESPONDERS GET SELECTED



WHAT HAPPENS AFTER I AM SELECTED?

Responder
Guide

Meals

Reimbursement

Important
Contacts

Lodging

Sharing Your
Experience

Expectations

Air & Ground
Travel

Signing Up
Again

SIGN UP NOW!



FIRTeamInfo@aspca.org

www.aspcapro.org/firvolunteer