

A FEW COMING ATTRACTIONS FROM ASPCA^{PRO}

www.aspcapro.org/webinars

- **How to Get Better Results from Your Time, Money, and Energy** (7/19)
- **Using Research to Avoid Wasting Your Precious Resources** (7/23)
- **Reduce Length of Stay through Foster Care** (8/08)
- **Preventative Treatments for Foster Animals** (8/15)



CEUs

This webinar is eligible for **CEU credit**
if you are already a:
Certified Behavior Consultant-Canine

**Information will be emailed to you
tomorrow**



YOUR CHAT MODERATOR



**Heather Mohan-Gibbons,
MS, RVT, ACAAB, CBCC-KA**
Director,
Applied Research and Behavior
ASPCA



YOUR PRESENTER



Trish McMillan Loehr, MSc, CPDT
Director, Applied Research and
Behavior
ASPCA



Canine Communication Series: Dog Introductions



ASPCA
ASPCApro.org

Agenda

- Dog greeting body language
- Introducing dogs
- Co-kenneling/play groups
- Play or fight?
- Warning signs
- Breaking up a dog fight



ASPCA
ASPCApro.org

Dog Introductions

- New adoption or foster
- Friend's dog
- Dog park
- Dog day care
- At a shelter



note for shelters

ASPCA
ASPCApro.org

Body language: Play!

- Eyes squinty
- Body loose and wiggly
- Play bow
- Elbow bends



ASPCA
ASPCApro.org

Body language: Play!

- Tail medium to low
- Long, sweeping wag
- Play biting
- Flea biting (grooming)



Paw lift, ears back



Photos: Cindy Bruckart
Multnomah Co. Humane Society



Body language: Play!

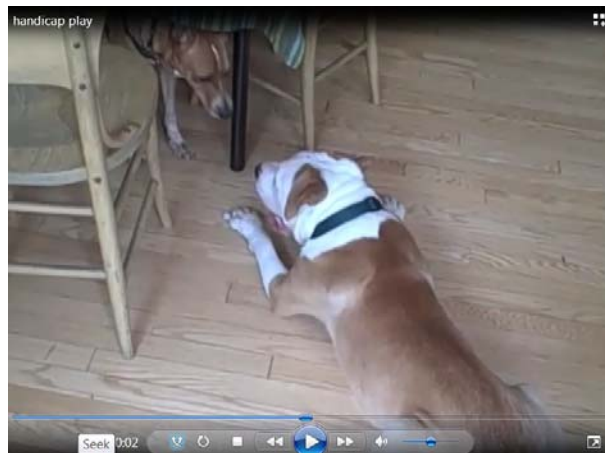
- Brief pauses in movement
- Bouncing body movements
- Open mouths
- “Self-handicapping”



Photo: Cindy Bruckart



Video: Self-handicapping



Choice

- How do you tell if both dogs are playing?



The yellow dog is always chased in this relationship

ASPCA
ASPCApro.org

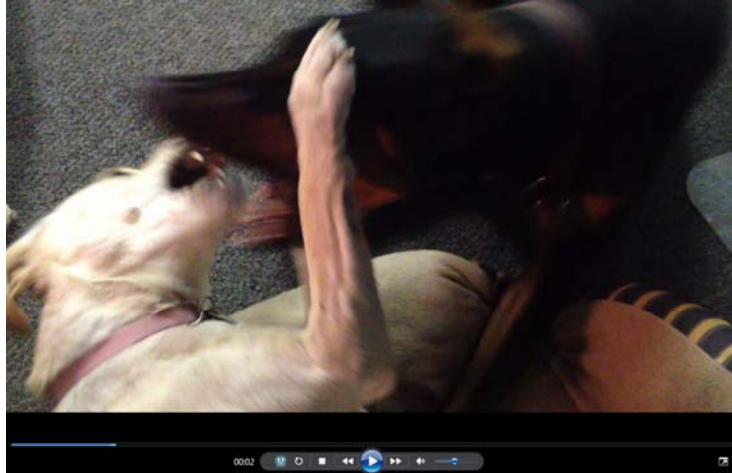
Is it play or a fight?

- Reciprocal – taking turns
- Swordplay
- Body tension
- Most dog fights are non-damaging



ASPCA
ASPCApro.org

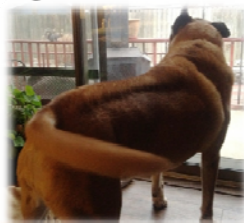
Is it play or a fight?



ASPCA
ASPCApro.org

Concerning Body Language

- Head or tail remain high
- Hackles
- Repeated mounting attempts
- Stiff body
- Hard eye
- Ears staying forward



ASPCA
ASPCApro.org

Concerning Body Language

- Lip wrinkle
- Bared teeth
- Growl



Photo: Amy Cook



Concerning Body Language

- Escape, avoidance, or hiding behaviors



Concerning Body Language

- One dog chasing other with no role reversal



ASPCA
ASPCApro.org

What do you see?



ASPCA
ASPCApro.org

Introducing new dogs

- Parallel walks
- Linear walks
- Using fence/ ex pen
- Frequent breaks
- Loose leashes



ASPCA
ASPCApro.org

Parallel walks

- One handler per dog
- Start far away



Thanks to Elsa and Danielle at the Champaign County Humane Society for their time and the use of these cute shelter dogs!

ASPCA
ASPCApro.org

Move closer

- Keep moving forward
- Keep leashes loose, if possible



ASPCA
ASPCApro.org

Exploring

- Allow to sniff, mark things
- Keep leashes loose when interacting



ASPCA
ASPCApro.org

Linear Walks

- Take turns following
- Gradually move closer



ASPCA
ASPCApro.org

Linear walks

- Allow sniffs
- Move away
- Allow to sniff, urinate on things



ASPCA
ASPCApro.org

Greeting through ex pen

- Great for foster homes!
- Can be used in kennels with smaller dogs



ASPCA
ASPCApro.org

Fence greeting guidelines

- Potential barrier issues
- Use neutral fence
- Loose leash on new dog
- Keep greeter dog back



ASPCA
ASPCApro.org

Greeting through fence



Greeting through fence



Co-kenneling guidelines

- Same sex or opposite?
- Age differences
- Play styles
- Size differences



ASPCA
ASPCApro.org

Shelter play groups

- Check dog's connection to humans
- Meet friendly dog through fence
- Bring dog in, drop leash when safe
- Interrupt every 30 seconds
- Start with a core group
- Add new dogs one at a time
- Play group size depends on group



ASPCA
ASPCApro.org

Play group



ASPCA
ASPCApro.org

Size Differences

- Predatory caution
- Caution with play groups or co-housing if
 - More than a 50% size difference
 - Play style is inappropriate



ASPCA
ASPCApro.org

Working with co-kennelled dogs

- Feeding options
 - Remove
 - Guillotine door
 - Crate
 - Tether (tie)
- Getting dogs out of kennel
- Ex pen “airlock”



ASPCA
ASPCApro.org

Breaking up a dog fight

- Number of dogs/handlers
- Who is aggressor?
- Bully breed notes
- Other fight styles
- Where are dogs going?
- Have a plan



ASPCA
ASPCApro.org

Breaking up a dog fight

- Keep leashes dragging
- Loud noises
- Water
- Citronella spray
- Towel or blanket
- Put something between them
- Pull dogs apart using their rear legs (not if one or both dogs are holding on)



4

© 2009 ASPCA®. All Rights Reserved.

ASPCA
WE ARE THEIR VOICE™

What **not** to do:

- Grab collars
- Hit, kick or punch
- Put your hands near dog's mouth
- Put your body between dogs
- Pick up dog

ASPCA
ASPCApro.org

Breaking things up



ASPCA
ASPCApro.org

Loud noises

- Voice
- Clang food pans together
- Air horn



ASPCA
ASPCApro.org

Water

- Hose
- Bucket
- Water dish
- Water gun



Con: some dogs like water!

ASPCA
ASPCApro.org

Citronella spray

- Spray in front of nose
- Easier on human noses than pepper spray



ASPCA
ASPCApro.org

Towel or blanket

- Throw over aggressor's face or both dogs



ASPCA
ASPCApro.org

Put something between dogs

- Door
- Trash can
- Chair



ASPCA
ASPCApro.org

Break sticks and how to use

- **Only suitable for bully breeds**
- Who should own a break stick
- Where to buy
- Stick placement and use



4

© 2009 ASPCA®. All Rights Reserved.

ASPCA
WE ARE THEIR VOICE™



4

© 2009 ASPCA®. All Rights Reserved.

ASPCA
WE ARE THEIR VOICE™

Summary

- Learn how to read body language
- Take things slowly
- Have a plan in case things go wrong
- Get the right equipment
- Have fun!



ASPCA
ASPCapro.org

A FEW COMING ATTRACTIONS FROM ASPCA PRO

www.aspcapro.org/webinars

- **How to Get Better Results from Your Time, Money, and Energy** (7/19)
- **Using Research to Avoid Wasting Your Precious Resources** (7/23)
- **Reduce Length of Stay through Foster Care** (8/08)
- **Preventative Treatments for Foster Animals** (8/15)

ASPCA
ASPCapro.org