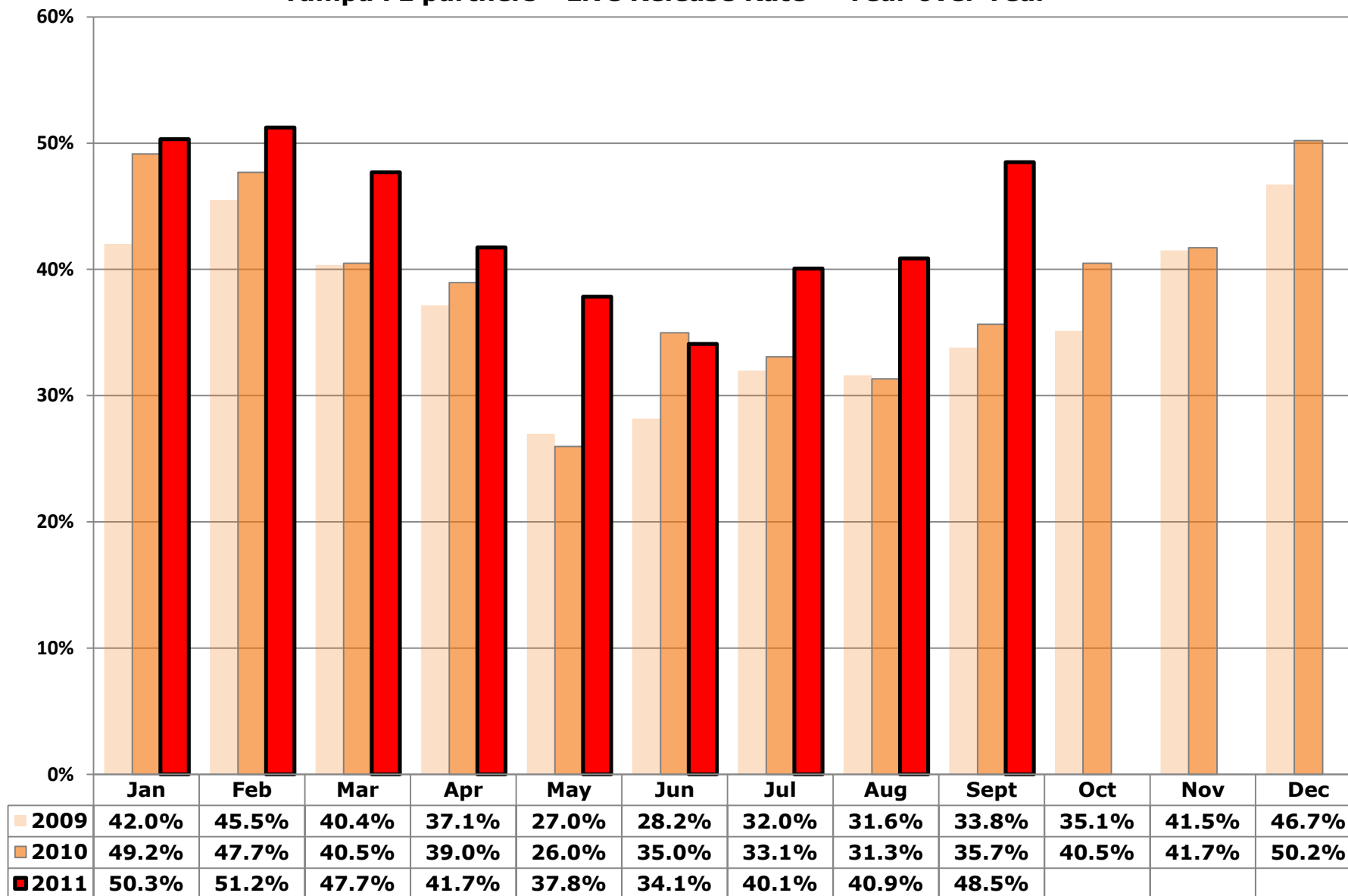


Tampa FL partners - Live Release Rate -- Year over Year



Tampa partners, FL: Dashboard Summary: 2011

Indicators - 2011	Rate/000 People	Dogs (adults)	Puppies & Neonates	Cats (adults)	Kittens & Neonates	Total YTD
Live Release Rate		52.4%	77.1%	21.8%	31.6%	42.8%
Total Live Release	6.64	3,599	1,991	1,038	1,532	8,160
Total Intake (net Returns)	15.51	6,863	2,584	4,767	4,849	19,063
Total Stray Intake	10.68	4,445	1,046	3,707	3,930	13,128
Total Returns	0.24	169	76	31	25	301
Total Returned to Owner (RTO)	0.84	891	40	83	13	1,027
Total Adopted (net Returns)	5.12	2,273	1,890	862	1,270	6,295
Total Returned to Field	0.00	na	na	0	0	0
Transferred out of Partnership for Placement	0.68	435	61	93	249	838
Total Animals Euthanized	8.74	3,331	417	3,769	3,224	10,741
Targeted Spay/Neuter Surgeries	7.10	1,358	905	4,883	1,577	8,723
<i>Other Rates:</i>						
RTO Rate (as % of Stray intake)		20%	4%	2%	0%	8%
Adoption Rate (as % of Total Intake)		33%	73%	18%	26%	33%
Return Rate (% of Adoptions)		7%	4%	3%	2%	5%
Euthanasia Rate (as % of Total Intake)		49%	16%	79%	66%	56%

Targeted Spay/ Neuter and TNR	Q1	Q2	Q3	Q4	Total YTD
# targeted S/N conducted on cats (other than TNR)?	395	225	236	0	856
# targeted S/N conducted on kittens (other than TNR)?	263	151	157	0	571
# targeted S/N conducted on dogs?	475	445	438	0	1,358
# targeted S/N conducted on puppies?	316	297	292	0	905
# Cat(s) TNR?	1,145	1,282	1,600	0	4,027
# Kitten(s) TNR?	286	320	400	0	1,006
Total Spay/Neuter and TNR	2,880	2,720	3,123	0	8,723

Tampa partners, FL: Dashboard Summary: 2011

Intake and Outcomes	All CANINES				
	Q1	Q2	Q3	Q4	Total
Live Release Rate	62.5%	57.5%	57.5%	-	59.2%
# Total Live Release	1,977	1,744	1,869	0	5,590
# Total Intake (net returns)	3,161	3,033	3,253	0	9,447
Subcategory: # of Strays	1,743	1,695	2,053	0	5,491
Subcategory: # returned within 30 days of adoption	100	76	69	0	245
# Intakes processed through partner transfers	364	336	328	0	1,028
# Returned-to-Owner (RTO)	366	264	301	0	931
# Adoptions (net Returns)	1,449	1,315	1,399	0	4,163
# Adoptions processed	1,549	1,391	1,468	0	4,408
# transferred to partners	364	336	327	0	1,027
# transferred out of the partnership for Placement	162	165	169	0	496
# euthanized per owner request	68	2	5	0	75
# euthanized other than owner request	1,055	1,147	1,471	0	3,673
# died in care	4	4	14	0	22
# lost in care	0	3	0	0	3
<i>Other Rates:</i>					
RTO Rate (as % of Stray intake)	21%	16%	15%	-	17%
Adoption Rate (as % of Total Intake)	46%	43%	43%	-	44%
Return Rate (% of Adoptions)	6%	5%	5%	-	6%
Euthanasia Rate (as % of Total Intake)	36%	38%	45%	-	40%

Intake and Outcomes	All FELINES				
	Q1	Q2	Q3	Q4	Total
Live Release Rate	31.1%	22.8%	28.6%	-	26.7%
# Total Live Release	684	926	960	0	2,570
# Total Intake (net returns)	2,196	4,063	3,357	0	9,616
Subcategory: # of Strays	1,659	3,402	2,576	0	7,637
Subcategory: # returned within 30 days of adoption	18	12	26	0	56
# Intakes processed through partner transfers	161	88	109	0	358
# Returned-to-Owner (RTO)	42	39	15	0	96
# Adoptions (net Returns)	554	725	853	0	2,132
# Adoptions processed	572	737	879	0	2,188
# Returned to Field	0	0	0	0	0
# transferred to partners	172	81	108	0	361
# transferred out of the partnership for Placement	88	162	92	0	342
# euthanized per owner request	50	1	2	0	53
# euthanized other than owner request	1,394	3,051	2,495	0	6,940
# died in care	6	27	18	0	51
# lost in care	3	0	0	0	3
<i>Other Rates:</i>					
RTO Rate (as % of Stray intake)	3%	1%	1%	-	1%
Adoption Rate (as % of Total Intake)	25%	18%	25%	-	22%
Return Rate (% of Adoptions)	3%	2%	3%	-	3%
Euthanasia Rate (as % of Total Intake)	66%	75%	74%	-	73%

Tampa partners, FL: Dashboard Summary: 2011

Intake and Outcomes	Dogs				
	Q1	Q2	Q3	Q4	Total
Live Release Rate	54.5%	51.5%	51.3%	-	52.4%
# Total Intake (net returns)	2,286	2,194	2,383	0	6,863
Subcategory: # of Strays	1,436	1,365	1,644	0	4,445
Subcategory: # returned within 30 days of adoption	67	52	50	0	169
# Intakes processed through partner transfers	217	153	141	0	511
# Returned-to-Owner (RTO)	354	251	286	0	891
# Adoptions (net Returns)	744	731	798	0	2,273
# Adoptions processed	811	783	848	0	2,442
# transferred to partners	255	235	209	0	699
# transferred out of the partnership for Placement	147	149	139	0	435
# euthanized per owner request	65	2	5	0	72
# euthanized other than owner request	969	991	1,299	0	3,259
# died in care	1	2	3	0	6
# lost in care	0	3	0	0	3

Intake and Outcomes	Puppies & Neonate canines				
	Q1	Q2	Q3	Q4	Total
Live Release Rate	83.7%	73.1%	74.3%	-	77.1%
# Total Intake (net returns)	875	839	870	0	2,584
Subcategory: # of Strays	307	330	409	0	1,046
Subcategory: # returned within 30 days of adoption	33	24	19	0	76
# Intakes processed through partner transfers	147	183	187	0	517
# Returned-to-Owner (RTO)	12	13	15	0	40
# Adoptions (net Returns)	705	584	601	0	1,890
# Adoptions processed	738	608	620	0	1,966
# transferred to partners	109	101	118	0	328
# transferred out of the partnership for Placement	15	16	30	0	61
# euthanized per owner request	3	0	0	0	3
# euthanized other than owner request	86	156	172	0	414
# died in care	3	2	11	0	16
# lost in care	0	0	0	0	0

Tampa partners, FL: Dashboard Summary: 2011

Intake and Outcomes	Cats				Total
	Q1	Q2	Q3	Q4	
Live Release Rate	26.8%	18.9%	19.5%	-	21.8%
# Total Intake (net returns)	1,624	1,664	1,479	0	4,767
Subcategory: # of Strays	1,278	1,296	1,133	0	3,707
Subcategory: # returned within 30 days of adoption	13	6	12	0	31
# Intakes processed through partner transfers	116	43	16	0	175
# Returned-to-Owner (RTO)	40	28	15	0	83
# Adoptions (net Returns)	350	254	258	0	862
# Adoptions processed	363	260	270	0	893
# Returned to Field	0	0	0	0	0
# transferred to partners	119	31	53	0	203
# transferred out of the partnership for Placement	45	33	15	0	93
# euthanized per owner request	41	1	2	0	44
# euthanized other than owner request	1,190	1,294	1,241	0	3,725
# died in care	2	1	2	0	5
# lost in care	2	0	0	0	2

Intake and Outcomes	Kittens & Neonate felines				Total
	Q1	Q2	Q3	Q4	
Live Release Rate	43.5%	25.5%	35.8%	-	31.6%
# Total Intake (net returns)	572	2,399	1,878	0	4,849
Subcategory: # of Strays	381	2,106	1,443	0	3,930
Subcategory: # returned within 30 days of adoption	5	6	14	0	25
# Intakes processed through partner transfers	45	45	93	0	183
# Returned-to-Owner (RTO)	2	11	0	0	13
# Adoptions (net Returns)	204	471	595	0	1,270
# Adoptions processed	209	477	609	0	1,295
# Returned to Field	0	0	0	0	0
# transferred to partners	53	50	55	0	158
# transferred out of the partnership for Placement	43	129	77	0	249
# euthanized per owner request	9	0	0	0	9
# euthanized other than owner request	204	1,757	1,254	0	3,215
# died in care	4	26	16	0	46
# lost in care	1	0	0	0	1

Community Descriptors (1)	U.S.	Mayor's Alliance, NYC, NY	ALUMNUS: Hillsborough County, FL (Tampa)	Spokane County, WA	Travis County, TX (Austin)	Charleston, SC	Oklahoma City, OK	Buncombe County, NC	Cleveland, OH	Shelby County, AL	Sacramento County, CA	Miami-Dade County, FL	San Francisco Cnty (c)
clockstart		2003	May-07	Aug-07	Jan-07	Apr-08	July-08	July-08	July-08	July-09	July-09	January-11	
Human Population 2009 (a)													
Total population in thousands (2010 Census)	307,007	8,175	1,229	471	1,024	350	580	238	397	195	1,419	2,496	805
2015/2010 growth (cumulative, not annual rate)	5%	1%	7%	7%	13%	8%	9%	5%	-6%	11%	6%	4%	4%
Percent of population that is urban	79%	100%	94%	86%	93%	86%	90%	71%	100%	64%	98%	99%	100%
Percent of population 18 and over in poverty	13%	16%	13%	14%	14%	14%	15%	15%	30%	5%	13%	16%	12%
Number of households in thousands	113,616	3,087	456	186	398	145	224	98	185	74	507	813	325
Median household income	\$ 50,221	\$ 50,033	\$ 47,168	\$ 44,719	\$ 53,396	\$ 46,473	\$ 41,411	\$ 40,675	\$ 24,687	\$ 64,371	\$ 52,504	\$ 41,533	\$ 70,770
White Pop	299,773	3,912	892	423	716	231	373	205	189	163	859	1,841	444
White population in percent (d)	98%	48%	73%	90%	70%	66%	64%	86%	48%	83%	61%	74%	55%
Black or AA Pop	38,094	2,110	205	7	86	108	83	16	219	20	138	482	50
Black or African American population in percent (d)	12%	26%	17%	2%	8%	31%	14%	7%	55%	10%	10%	19%	6%
Asian Pop	13,775	1,004	38	11	56	6	22	2	7	3	192	41	252
Asian population in percent (d)	4%	12%	3%	2%	5%	2%	4%	1%	2%	2%	14%	2%	31%
Hispanic Pop	48,357	2,315	280	20	341	14	88	11	40	8	287	1563	117
Hispanic population in percent (d)	16%	28%	23%	4%	33%	4%	15%	5%	10%	4%	20%	63%	15%
Percent of population that speaks English less than "very well"	9%	23%	10%	3%	15%	3%	9%	3%	5%	na	13%	35%	23%
Rental HHs	38,773	2,051	176	65	190	60	91	32	100	16	215	350	202
Rental households as percent of total	34%	66%	39%	35%	48%	41%	41%	32%	54%	21%	42%	43%	62%
No vehicle HHs	10,109	1,676	30	13	21	12	16	6	46	2	37	90	98
Percent of households with no vehicles	9%	54%	7%	7%	5%	9%	7%	6%	25%	2%	7%	11%	30%
Animal Population (b)													
Percent of households with dogs - 2007 (Dec. 31, 2006)	37.2%	26.1%	35.6%	39.9%	44.6%	39.2%	55.8%	43.3%	36.2%	41.2%	34.4%	35.6%	34.4%
Average number of dogs per household	1.7	1.5	1.7	1.6	1.8	1.8	2.0	1.8	1.7	1.9	1.6	1.7	1.6
Estimated number of owned dogs, in thousands	71,851	1,209	276	119	320	102	249	77	114	58	279	492	179
Percentage of households with cats	32.4%	28.7%	28.8%	44.5%	31.1%	29.4%	34.2%	31.1%	32.4%	31.7%	32.6%	28.8%	32.6%
Average number of cats per household	2.2	2.0	2.1	2.0	2.4	2.2	2.6	2.2	2.4	2.3	2.1	2.1	2.1
Estimated number of owned cats	80,986	1,772	276	165	297	94	199	67	144	54	347	492	222
Estimated number of owned animals, in thousands	152,837	2,981	551	284	617	196	448	144	258	112	627	983	401
Estimated number of free-roaming cats in thousands (e)	49,082	1,334	197	80	172	63	97	42	80	32	219	351	140
Estimated total number of animals, in thousands	201,919	4,315	748	364	789	258	545	186	338	144	846	1,335	541
Estimated number of owned animals in poverty, in thousands	19,105	486	71	40	86	26	68	22	77	6	83	156	46

Notes:

- 1 Sources: American Community Survey Estimates: 2009 (human population), AVMA, US Pet Ownership & Demographics Sourcebook, 2007 Edition (animal population)
- a. The 2009 ACS one-year estimates are based on data collected between January 2009 and December 2009. They are published for selected geographic areas with populations of 65,000 or greater, represent the average characteristics over calendar year 2009.
- b. Source: 2007 U.S. Pet Ownership & Demographics Sourcebook (per AVMA website) (based on US Census Bureau: 2006 Current Population Survey), Tables 1-8 & 1-13.
- d. Ethnicities do not add to 100% because Hispanic can include White and Black. Also, white and black are people reporting one race only.
- e. 12% of households feed 3.6 cats each (Levy, J, Woods, J, Turick, S; & Etheridge, D. "Number of Free-roaming Cats in a College Community in the Southern United States and Characteristics of Community Residents who Feed Them." *J Am Vet Med Assoc* 2003; 223(2): 202-205)