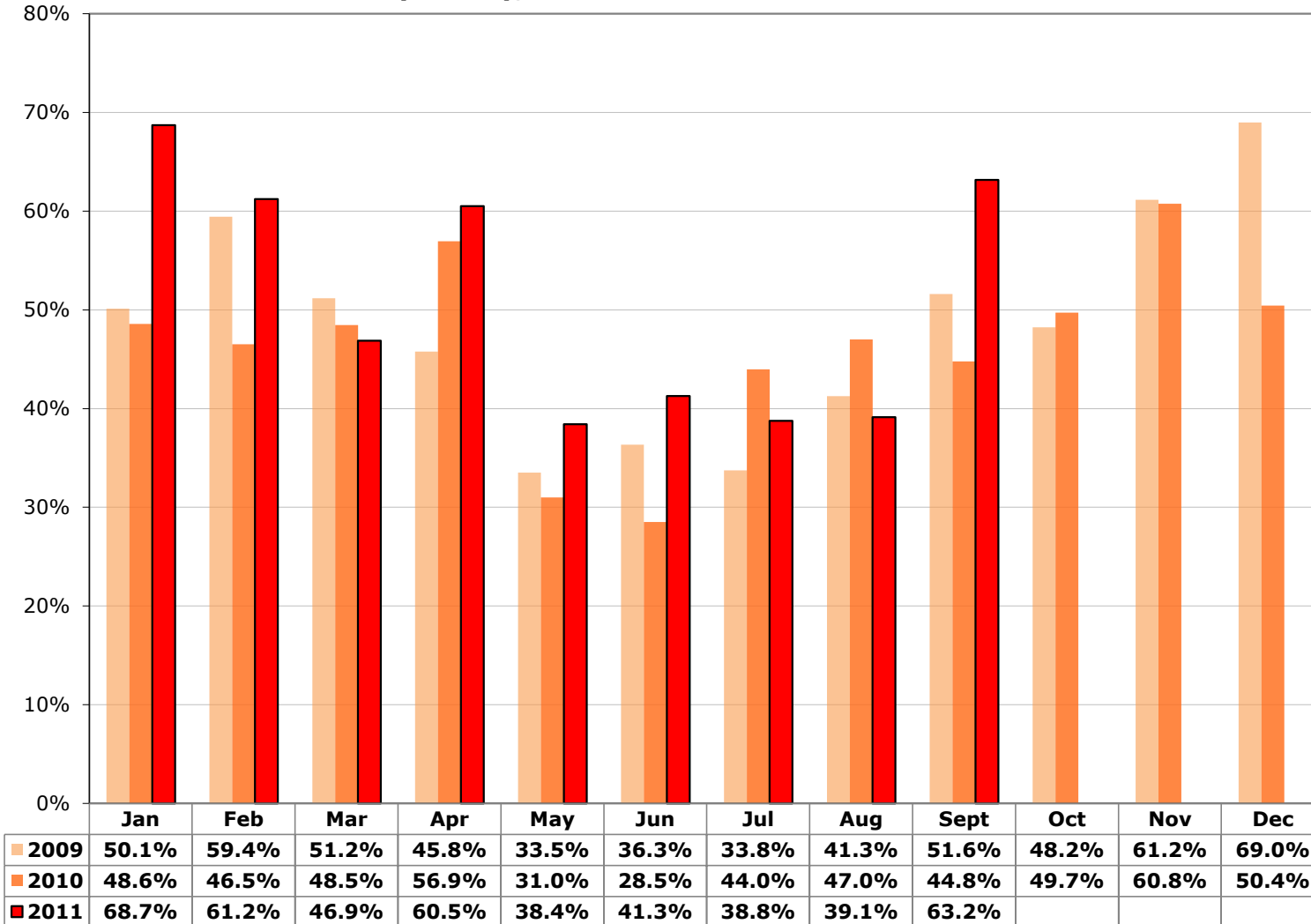


Shelby County, AL- Live Release Rate - Year over Year



Shelby County, AL: Dashboard Summary: Q3 2011

Indicators - 2011	Rate/000 People	Dogs (adults)	Puppies & Neonates	Cats (adults)	Kittens & Neonates	Total YTD
Live Release Rate		67.4%	60.0%	33.9%	20.5%	48.3%
Total Live Release	9.83	873	589	274	181	1,917
Total Intake (net Returns)	20.35	1,296	981	809	884	3,970
Total Stray Intake	11.76	764	609	429	492	2,294
Total Returns	0.19	22	5	8	3	38
Total Returned to Owner (RTO)	1.01	130	16	39	13	198
Total Adopted (net Returns)	4.21	277	145	233	167	822
Total Returned to Field	0.00	na	na	na	na	0
Transferred out of Partnership for Placement	4.60	466	428	2	1	897
Total Animals Euthanized	10.27	547	267	568	622	2,004
Targeted Spay/Neuter Surgeries	6.83	662	51	505	114	1,332
<i>Other Rates:</i>						
RTO Rate (as % of Stray intake)		17%	3%	9%	3%	9%
Adoption Rate (as % of Total Intake)		21%	15%	29%	19%	21%
Return Rate (% of Adoptions)		7%	3%	3%	2%	4%
Euthanasia Rate (as % of Total Intake)		42%	27%	70%	70%	50%

Targeted Spay/ Neuter and TNR	Q1	Q2	Q3	Q4	Total YTD
# targeted S/N conducted on cats (other than TNR)	226	118	161	0	505
# targeted S/N conducted on kittens (other than TNR)	21	25	68	0	114
# targeted S/N conducted on dogs	177	249	236	0	662
# targeted S/N conducted on puppies	14	18	19	0	51
# Cat(s) TNR	0	0	0	0	0
# Kitten(s) TNR	0	0	0	0	0
Total Spay/Neuter and TNR	438	410	484	0	1,332

Shelby County, AL: Dashboard Summary: Q3 2011

Intake and Outcomes	All CANINES				
	Q1	Q2	Q3	Q4	Total
Live Release Rate	65.5%	60.9%	66.0%	-	64.2%
# Total Live Release	422	450	590	0	1,462
# Total Intake (net returns)	644	739	894	0	2,277
Subcategory: # of Strays	399	425	549	0	1,373
Subcategory: # returned within 30 days of adoption	6	6	15	0	27
# Intakes processed through partner transfers	89	95	97	0	281
# Returned-to-Owner (RTO)	45	62	39	0	146
# Adoptions (net Returns)	92	115	215	0	422
# Adoptions processed	98	121	230	0	449
# transferred to partners	89	70	91	0	250
# transferred out of the partnership for Placement	285	273	336	0	894
# euthanized per owner request	4	4	8	0	16
# euthanized other than owner request	214	262	322	0	798
# died in care	13	16	20	0	49
# lost in care	0	2	0	0	2
<i>Other Rates:</i>					
RTO Rate (as % of Stray intake)	11%	15%	7%	-	11%
Adoption Rate (as % of Total Intake)	14%	16%	24%	-	19%
Return Rate (% of Adoptions)	6%	5%	7%	-	6%
Euthanasia Rate (as % of Total Intake)	34%	36%	37%	-	36%

Intake and Outcomes	All FELINES				
	Q1	Q2	Q3	Q4	Total
Live Release Rate	42.9%	26.7%	20.7%	-	26.9%
# Total Live Release	129	170	156	0	455
# Total Intake (net returns)	301	637	755	0	1,693
Subcategory: # of Strays	185	332	404	0	921
Subcategory: # returned within 30 days of adoption	0	6	5	0	11
# Intakes processed through partner transfers	45	58	85	0	188
# Returned-to-Owner (RTO)	28	4	20	0	52
# Adoptions (net Returns)	101	165	134	0	400
# Adoptions processed	101	171	139	0	411
# Returned to Field	0	0	0	0	0
# transferred to partners	45	55	74	0	174
# transferred out of the partnership for Placement	0	1	2	0	3
# euthanized per owner request	1	4	2	0	7
# euthanized other than owner request	170	347	666	0	1,183
# died in care	1	18	7	0	26
# lost in care	0	0	1	0	1
<i>Other Rates:</i>					
RTO Rate (as % of Stray intake)	15%	1%	5%	-	6%
Adoption Rate (as % of Total Intake)	34%	26%	18%	-	24%
Return Rate (% of Adoptions)	0%	4%	4%	-	3%
Euthanasia Rate (as % of Total Intake)	57%	55%	88%	-	70%

Shelby County, AL: Dashboard Summary: Q3 2011

Intake and Outcomes	<u>Dogs</u>				
	Q1	Q2	Q3	Q4	Total
Live Release Rate	59.9%	72.6%	68.7%	-	67.4%
# Total Intake (net returns)	387	430	479	0	1,296
Subcategory: # of Strays	235	241	288	0	764
Subcategory: # returned within 30 days of adoption	5	6	11	0	22
# Intakes processed through partner transfers	54	49	70	0	173
# Returned-to-Owner (RTO)	44	49	37	0	130
# Adoptions (net Returns)	59	80	138	0	277
# Adoptions processed	64	86	149	0	299
# transferred to partners	52	49	73	0	174
# transferred out of the partnership for Placement	129	183	154	0	466
# euthanized per owner request	4	4	8	0	16
# euthanized other than owner request	150	168	213	0	531
# died in care	3	2	1	0	6
# lost in care	0	2	0	0	2

Intake and Outcomes	<u>Puppies & Neonate Canines</u>				
	Q1	Q2	Q3	Q4	Total
Live Release Rate	73.9%	44.7%	62.9%	-	60.0%
# Total Intake (net returns)	257	309	415	0	981
Subcategory: # of Strays	164	184	261	0	609
Subcategory: # returned within 30 days of adoption	1	0	4	0	5
# Intakes processed through partner transfers	35	46	27	0	108
# Returned-to-Owner (RTO)	1	13	2	0	16
# Adoptions (net Returns)	33	35	77	0	145
# Adoptions processed	34	35	81	0	150
# transferred to partners	37	21	18	0	76
# transferred out of the partnership for Placement	156	90	182	0	428
# euthanized per owner request	0	0	0	0	0
# euthanized other than owner request	64	94	109	0	267
# died in care	10	14	19	0	43
# lost in care	0	0	0	0	0

Shelby County, AL: Dashboard Summary: Q3 2011

Intake and Outcomes	Cats				
	Q1	Q2	Q3	Q4	Total
Live Release Rate	43.3%	38.7%	22.5%	-	33.9%
# Total Intake (net returns)	245	253	311	0	809
Subcategory: # of Strays	153	112	164	0	429
Subcategory: # returned within 30 days of adoption	0	5	3	0	8
# Intakes processed through partner transfers	45	21	45	0	111
# Returned-to-Owner (RTO)	28	4	7	0	39
# Adoptions (net Returns)	78	93	62	0	233
# Adoptions processed	78	98	65	0	241
# Returned to Field	0	0	0	0	0
# transferred to partners	45	21	43	0	109
# transferred out of the partnership for Placement	0	1	1	0	2
# euthanized per owner request	1	4	2	0	7
# euthanized other than owner request	156	159	246	0	561
# died in care	1	0	0	0	1
# lost in care	0	0	0	0	0

Intake and Outcomes	Kittens & Neonate Felines				
	Q1	Q2	Q3	Q4	Total
Live Release Rate	41.1%	18.8%	19.4%	-	20.5%
# Total Intake (net returns)	56	384	444	0	884
Subcategory: # of Strays	32	220	240	0	492
Subcategory: # returned within 30 days of adoption	0	1	2	0	3
# Intakes processed through partner transfers	0	37	40	0	77
# Returned-to-Owner (RTO)	0	0	13	0	13
# Adoptions (net Returns)	23	72	72	0	167
# Adoptions processed	23	73	74	0	170
# Returned to Field	0	0	0	0	0
# transferred to partners	0	34	31	0	65
# transferred out of the partnership for Placement	0	0	1	0	1
# euthanized per owner request	0	0	0	0	0
# euthanized other than owner request	14	188	420	0	622
# died in care	0	18	7	0	25
# lost in care	0	0	1	0	1

ASPCA: 2010 Animal Stats YTD Dashboard Summary -- Definitions

Key Indicators	
Live Release Rate	Rate calculation = Total Live Release count divided by Total Intake
Total Live Release	Community/Partnership total live release: sum of (animals returned to owner, adopted (net of returns), Released to Field (felines), or transferred outside the partner organizations to agencies that guarantee adoption of the animals transferred to them) minus the number of animals adopted but returned within 30 days.
Total Intake	Community/Partnership total intake: sum of animals entering all partner agencies from non-partner sources (i.e., excludes number transferred between Dashboard-reporting partners), minus animals returned within 30 days of being adopted from one of the reporting partners.
Euthanasia	The total number of animals in partner facility(s) that were euthanized for all reasons (including Owner Request).
Targeted Spay/Neuter	The total number of animals altered through no or low-cost spay/neuter services or a TNR program. Targeted includes: <ul style="list-style-type: none"> • Low-income by actual level or entitlement qualification OR • Low-income / high-risk by location of residence OR • Unlikely to have been altered in the absence of low-cost program OR • Impounded one or more times as a stray OR • Feral or free-roaming animal
Animal categories	
Dogs	Canines over 5 months of age.
Puppies	Canines 6 weeks up to and including 5 months of age.
Canine neonates	Canines up to 6 weeks old.
Cats	Felines over 5 months of age.
Kittens	Felines 6 weeks up to and including 5 months of age.
Feline neonates	Felines up to 6 weeks old.
Intake Terms	
Stray	Animals picked up in field or brought to shelter (by anyone) that have no known owner.
Transfer from non-partner agencies	This number includes animals transferred FROM agencies that are not "Dashboard-reporting" partners.
Transfer from partner	Animals transferred from a "dashboard-reporting" partner.
Returns within 30 Days	Animals returned to shelter within 30 days of being adopted from that agency.
Outcome Terms	
Return to owner (RTO)	The number of animals included in shelter Intake count (current or prior reporting period) that are successfully reunited with their owners (i.e. reclaimed from shelter).
Adoption	This number includes final adoptions only. It does not include animals placed in foster care, on overnight 'trial' stays, or on hold at shelter prior to completion of adoption agreement.
Return to Field	These are animals included in Intake (current or a prior month), altered and returned to stray capture location as free-roaming felines.
Transfer - partners	This number includes animals sent to other agencies or organizations that are "Dashboard-reporting" partners.
Transfer - non-partners	This number includes animals transferred to agencies that are not "Dashboard-reporting" partners that guarantee placement.
Euth - owner-requested	Narrow category that should only include animals that were brought to the facility specifically for a low cost euthanasia option. Animals relinquished for adoption that are deemed "unadoptable" by the partner agency should not be included here.
Euth - all other [reasons]	The number of animals euthanized for all reasons EXCEPT owner-requested.
Died in care	Animals in the agency's care that die (cause is NOT euthanasia) during their stay (in shelter or foster).
Lost in Care	Animals lost while in agency's care (e.g., escape from foster home).
Targeted Spay/Neuter terms	
Targeted S/N [by animal type, other than TNR]	This number includes only S/N conducted on owned animals. It does not include shelter animals altered before adoption, or cats or kittens altered through a TNR program.
TNR (Trap, Neuter, Release)	Surgery count for stray,feral and/or free-roaming felines returned to a colony or other source location post-surgery. It does not include owned animals or shelter cats or kittens who will not be returned to a colony. It DOES include felines taken into the Shelter, counted as intake and then altered and Released to the Field.

Community Descriptors (1)	U.S.	Mayor's Alliance, NYC, NY	Hillsborough County, FL (Tampa)	Spokane County, WA	Travis County, TX (Austin)	Charleston, SC	Oklahoma City, OK	Buncombe County, NC	Cleveland, OH	Shelby County, AL	Sacramento County, CA	Miami-Dade County, FL	San Francisco Cnty (c)
clockstart		2003	May-07	Aug-07	Jan-07	Apr-08	July-08	July-08	July-08	July-09	July-09	January-11	
Human Population 2009 (a)													
Total population in thousands (2010 Census)	307,007	8,175	1,229	471	1,024	350	580	238	397	195	1,419	2,496	805
2015/2010 growth (cumulative, not annual rate)	5%	1%	7%	7%	13%	8%	9%	5%	-6%	11%	6%	4%	4%
Percent of population that is urban	79%	100%	94%	86%	93%	86%	90%	71%	100%	64%	98%	99%	100%
Percent of population 18 and over in poverty	13%	16%	13%	14%	14%	14%	15%	15%	30%	5%	13%	16%	12%
Number of households in thousands	113,616	3,087	456	186	398	145	224	98	185	74	507	813	325
Median household income	\$ 50,221	\$ 50,033	\$ 47,168	\$ 44,719	\$ 53,396	\$ 46,473	\$ 41,411	\$ 40,675	\$ 24,687	\$ 64,371	\$ 52,504	\$ 41,533	\$ 70,770
White Pop	299,773	3,912	892	423	716	231	373	205	189	163	859	1,841	444
White population in percent (d)	98%	48%	73%	90%	70%	66%	64%	86%	48%	83%	61%	74%	55%
Black or AA Pop	38,094	2,110	205	7	86	108	83	16	219	20	138	482	50
Black or African American population in percent (d)	12%	26%	17%	2%	8%	31%	14%	7%	55%	10%	10%	19%	6%
Asian Pop	13,775	1,004	38	11	56	6	22	2	7	3	192	41	252
Asian population in percent (d)	4%	12%	3%	2%	5%	2%	4%	1%	2%	2%	14%	2%	31%
Hispanic Pop	48,357	2,315	280	20	341	14	88	11	40	8	287	1563	117
Hispanic population in percent (d)	16%	28%	23%	4%	33%	4%	15%	5%	10%	4%	20%	63%	15%
Percent of population that speaks English less than "very well"	9%	23%	10%	3%	15%	3%	9%	3%	5%	na	13%	35%	23%
Rental HHs	38,773	2,051	176	65	190	60	91	32	100	16	215	350	202
Rental households as percent of total	34%	66%	39%	35%	48%	41%	41%	32%	54%	21%	42%	43%	62%
No vehicle HHs	10,109	1,676	30	13	21	12	16	6	46	2	37	90	98
Percent of households with no vehicles	9%	54%	7%	7%	5%	9%	7%	6%	25%	2%	7%	11%	30%
Animal Population (b)													
Percent of households with dogs - 2007 (Dec. 31, 2006)	37.2%	26.1%	35.6%	39.9%	44.6%	39.2%	55.8%	43.3%	36.2%	41.2%	34.4%	35.6%	34.4%
Average number of dogs per household	1.7	1.5	1.7	1.6	1.8	1.8	2.0	1.8	1.7	1.9	1.6	1.7	1.6
Estimated number of owned dogs, in thousands	71,851	1,209	276	119	320	102	249	77	114	58	279	492	179
Percentage of households with cats	32.4%	28.7%	28.8%	44.5%	31.1%	29.4%	34.2%	31.1%	32.4%	31.7%	32.6%	28.8%	32.6%
Average number of cats per household	2.2	2.0	2.1	2.0	2.4	2.2	2.6	2.2	2.4	2.3	2.1	2.1	2.1
Estimated number of owned cats	80,986	1,772	276	165	297	94	199	67	144	54	347	492	222
Estimated number of owned animals, in thousands	152,837	2,981	551	284	617	196	448	144	258	112	627	983	401
Estimated number of free-roaming cats in thousands (e)	49,082	1,334	197	80	172	63	97	42	80	32	219	351	140
Estimated total number of animals, in thousands	201,919	4,315	748	364	789	258	545	186	338	144	846	1,335	541
Estimated number of owned animals in poverty, in thousands	19,105	486	71	40	86	26	68	22	77	6	83	156	46

Notes:

- 1 Sources: American Community Survey Estimates: 2009 (human population), AVMA, US Pet Ownership & Demographics Sourcebook, 2007 Edition (animal population)
- a. [The 2009 ACS one-year estimates are based on data collected between January 2009 and December 2009. They are published for selected](#)
- b. Source: 2007 U.S. Pet Ownership & Demographics Sourcebook (per AVMA website) (based on US Census Bureau: 2006 Current Population Survey), Tables 1-8 & 1-13.
- d. Ethnicities do not add to 100% because Hispanic can include White and Black. Also, white and black are people reporting one race only.
- e. 12% of households feed 3.6 cats each (Levy, J, Woods, J, Turick, S; & Etheridge, D. "Number of Free-roaming Cats in a College Community in the Southern United States and Characteristics of Community Residents who Feed Them." *J Am Vet Med Assoc* 2003; 223(2): 202-205)