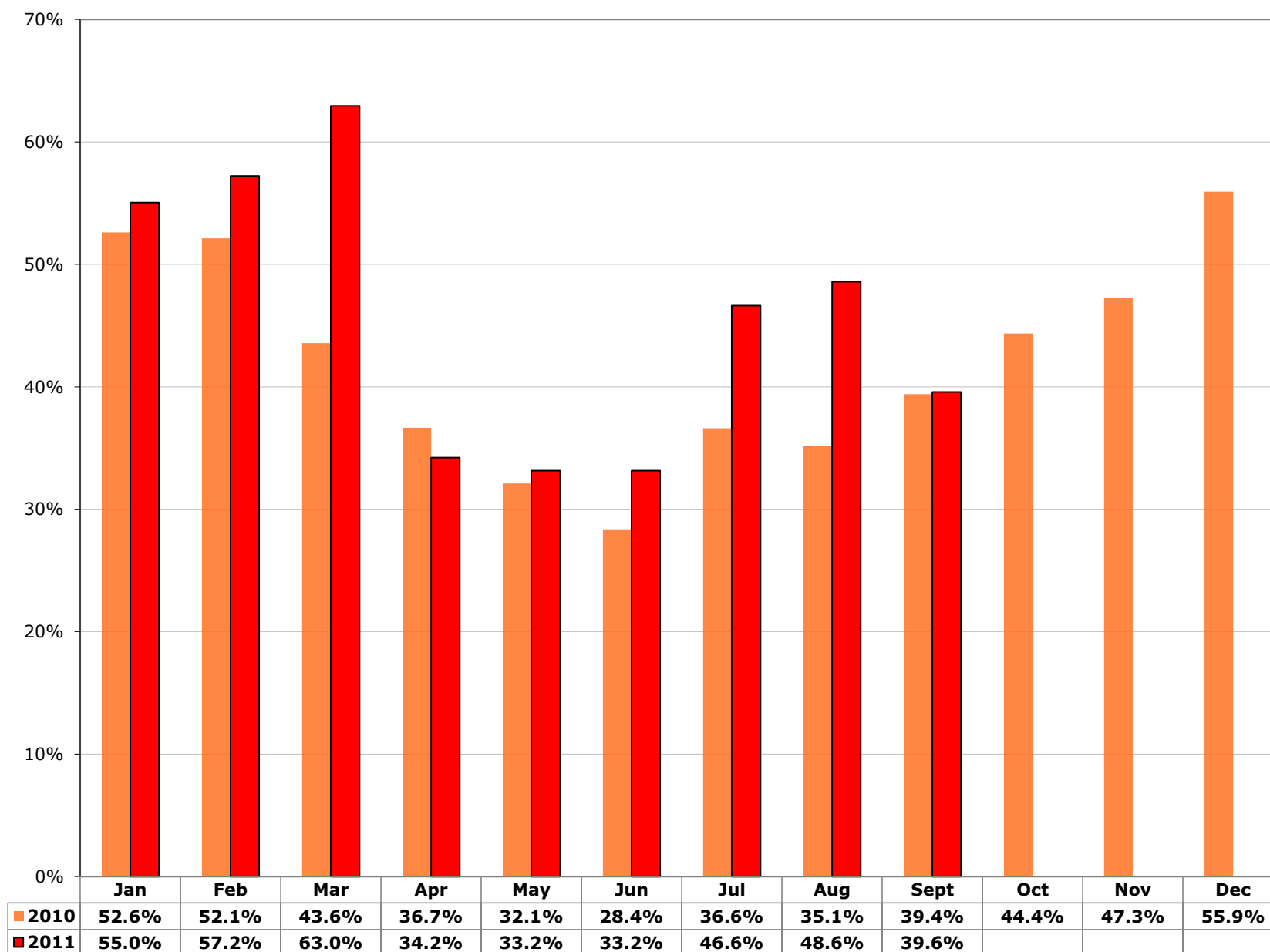


### Miami-Dade County, FL - Live Release Rate - Year over Year



## Miami-Dade County, FL: Dashboard Summary: Q3 2011

Indicators - 2011	Rate/000 People	Dogs (adults)	Puppies & Neonates	Cats (adults)	Kittens & Neonates	Total YTD
<b>Live Release Rate</b>		<b>59.4%</b>	<b>75.2%</b>	<b>16.5%</b>	<b>31.3%</b>	<b>45.2%</b>
Total Live Release	4.42	6,037	2,320	912	1,754	<b>11,023</b>
Total Intake (net Returns)	9.77	10,170	3,086	5,517	5,606	<b>24,379</b>
Total Stray Intake	7.24	6,910	2,222	4,300	4,640	<b>18,072</b>
Total Returns	0.20	266	135	30	79	<b>510</b>
Total Returned to Owner (RTO)	0.40	913	23	50	20	<b>1,006</b>
Total Adopted (net Returns)	2.73	3,032	1,606	772	1,399	<b>6,809</b>
Total Returned to Field	0.00	na	na	na	na	<b>0</b>
Transferred out of Partnership for Placement	1.29	2,092	691	90	335	<b>3,208</b>
Total Animals Euthanized	4.81	3,659	517	4,426	3,403	<b>12,005</b>
Targeted Spay/Neuter Surgeries	6.17	4,683	150	8,685	1,882	<b>15,400</b>
<i>Other Rates:</i>						
RTO Rate (as % of Stray intake)		13%	1%	1%	0%	<b>6%</b>
Adoption Rate (as % of Total Intake)		30%	52%	14%	25%	<b>28%</b>
Return Rate (% of Adoptions)		8%	8%	4%	5%	<b>7%</b>
Euthanasia Rate (as % of Total Intake)		36%	17%	80%	61%	<b>49%</b>

Targeted Spay/ Neuter and TNR	Q1	Q2	Q3	Q4	Total YTD
# targeted S/N conducted on cats (other than TNR)	1,505	1,379	1,158	0	<b>4,042</b>
# targeted S/N conducted on kittens (other than TNR)	401	225	473	0	<b>1,099</b>
# targeted S/N conducted on dogs	1,271	1,722	1,690	0	<b>4,683</b>
# targeted S/N conducted on puppies	32	52	66	0	<b>150</b>
# Cat(s) TNR	1,835	1,180	1,628	0	<b>4,643</b>
# Kitten(s) TNR	144	129	510	0	<b>783</b>
<b>Total Spay/Neuter and TNR</b>	<b>5,188</b>	<b>4,687</b>	<b>5,525</b>	<b>0</b>	<b>15,400</b>

## Miami-Dade County, FL: Dashboard Summary: Q3 2011

Intake and Outcomes	All CANINES				
	Q1	Q2	Q3	Q4	Total
<b>Live Release Rate</b>	<b>71.4%</b>	<b>53.9%</b>	<b>60.7%</b>	-	<b>63.0%</b>
# Total Live Release	3,455	1,639	3,263	0	<b>8,357</b>
# Total Intake (net returns)	4,836	3,040	5,380	0	<b>13,256</b>
Subcategory: # of Strays	3,172	2,238	3,722	0	<b>9,132</b>
Subcategory: # returned within 30 days of adoption	157	123	121	0	<b>401</b>
# Intakes processed through partner transfers	33	17	96	0	<b>146</b>
# Returned-to-Owner (RTO)	394	192	350	0	<b>936</b>
# Adoptions (net Returns)	2,230	925	1,483	0	<b>4,638</b>
# Adoptions processed	2,387	1,048	1,604	0	<b>5,039</b>
# transferred to partners	31	13	96	0	<b>140</b>
# transferred out of the partnership for Placement	831	522	1,430	0	<b>2,783</b>
# euthanized per owner request	260	289	267	0	<b>816</b>
# euthanized other than owner request	1,110	657	1,593	0	<b>3,360</b>
# died in care	31	55	36	0	<b>122</b>
# lost in care	4	4	8	0	<b>16</b>
<i>Other Rates:</i>					
RTO Rate (as % of Stray intake)	12%	9%	9%	-	10%
Adoption Rate (as % of Total Intake)	46%	30%	28%	-	35%
Return Rate (% of Adoptions)	7%	12%	8%	-	8%
Euthanasia Rate (as % of Total Intake)	28%	31%	35%	-	32%

Intake and Outcomes	All FELINES				
	Q1	Q2	Q3	Q4	Total
<b>Live Release Rate</b>	<b>32.4%</b>	<b>20.5%</b>	<b>23.0%</b>	-	<b>24.0%</b>
# Total Live Release	785	989	892	0	<b>2,666</b>
# Total Intake (net returns)	2,421	4,821	3,881	0	<b>11,123</b>
Subcategory: # of Strays	1,877	4,103	2,960	0	<b>8,940</b>
Subcategory: # returned within 30 days of adoption	19	47	43	0	<b>109</b>
# Intakes processed through partner transfers	6	222	29	0	<b>257</b>
# Returned-to-Owner (RTO)	33	24	13	0	<b>70</b>
# Adoptions (net Returns)	724	631	816	0	<b>2,171</b>
# Adoptions processed	743	678	859	0	<b>2,280</b>
# Returned to Field	0	0	0	0	<b>0</b>
# transferred to partners	174	347	118	0	<b>639</b>
# transferred out of the partnership for Placement	28	334	63	0	<b>425</b>
# euthanized per owner request	69	64	68	0	<b>201</b>
# euthanized other than owner request	1,386	3,448	2,794	0	<b>7,628</b>
# died in care	7	198	24	0	<b>229</b>
# lost in care	5	13	17	0	<b>35</b>
<i>Other Rates:</i>					
RTO Rate (as % of Stray intake)	2%	1%	0%	-	1%
Adoption Rate (as % of Total Intake)	30%	13%	21%	-	20%
Return Rate (% of Adoptions)	3%	7%	5%	-	5%
Euthanasia Rate (as % of Total Intake)	60%	73%	74%	-	70%

## Miami-Dade County, FL: Dashboard Summary: Q3 2011

Intake and Outcomes	<u>Dogs</u>				
	Q1	Q2	Q3	Q4	Total
<b>Live Release Rate</b>	<b>68.6%</b>	<b>49.9%</b>	<b>56.8%</b>	-	<b>59.4%</b>
# Total Intake (net returns)	3,594	2,393	4,183	0	<b>10,170</b>
Subcategory: # of Strays	2,313	1,722	2,875	0	<b>6,910</b>
Subcategory: # returned within 30 days of adoption	106	83	77	0	<b>266</b>
# Intakes processed through partner transfers	32	8	96	0	<b>136</b>
# Returned-to-Owner (RTO)	388	184	341	0	<b>913</b>
# Adoptions (net Returns)	1,511	602	919	0	<b>3,032</b>
# Adoptions processed	1,617	685	996	0	<b>3,298</b>
# transferred to partners	28	11	96	0	<b>135</b>
# transferred out of the partnership for Placement	568	408	1,116	0	<b>2,092</b>
# euthanized per owner request	253	282	256	0	<b>791</b>
# euthanized other than owner request	954	549	1,365	0	<b>2,868</b>
# died in care	17	23	19	0	<b>59</b>
# lost in care	4	4	8	0	<b>16</b>

Intake and Outcomes	<u>Puppies &amp; Neonate Canines</u>				
	Q1	Q2	Q3	Q4	Total
<b>Live Release Rate</b>	<b>79.5%</b>	<b>68.8%</b>	<b>74.1%</b>	-	<b>75.2%</b>
# Total Intake (net returns)	1,242	647	1,197	0	3,086
Subcategory: # of Strays	859	516	847	0	2,222
Subcategory: # returned within 30 days of adoption	51	40	44	0	135
# Intakes processed through partner transfers	1	9	0	0	10
# Returned-to-Owner (RTO)	6	8	9	0	23
# Adoptions (net Returns)	719	323	564	0	1,606
# Adoptions processed	770	363	608	0	1,741
# transferred to partners	3	2	0	0	5
# transferred out of the partnership for Placement	263	114	314	0	691
# euthanized per owner request	7	7	11	0	25
# euthanized other than owner request	156	108	228	0	492
# died in care	14	32	17	0	63
# lost in care	0	0	0	0	0
		0	0	0	0

## Miami-Dade County, FL: Dashboard Summary: Q3 2011

Intake and Outcomes	Cats				
	Q1	Q2	Q3	Q4	Total
<b>Live Release Rate</b>	<b>24.8%</b>	<b>11.2%</b>	<b>14.5%</b>	-	<b>16.5%</b>
# Total Intake (net returns)	1,721	1,970	1,826	0	<b>5,517</b>
Subcategory: # of Strays	1,324	1,641	1,335	0	<b>4,300</b>
Subcategory: # returned within 30 days of adoption	10	12	8	0	<b>30</b>
# Intakes processed through partner transfers	6	21	21	0	<b>48</b>
# Returned-to-Owner (RTO)	29	14	7	0	<b>50</b>
# Adoptions (net Returns)	386	164	222	0	<b>772</b>
# Adoptions processed	396	176	230	0	<b>802</b>
# Returned to Field	0	0	0	0	<b>0</b>
# transferred to partners	98	65	49	0	<b>212</b>
# transferred out of the partnership for Placement	12	42	36	0	<b>90</b>
# euthanized per owner request	68	61	59	0	<b>188</b>
# euthanized other than owner request	1,139	1,631	1,468	0	<b>4,238</b>
# died in care	3	3	1	0	<b>7</b>
# lost in care	1	4	4	0	<b>9</b>

Intake and Outcomes	Kittens & Neonate Felines				
	Q1	Q2	Q3	Q4	Total
<b>Live Release Rate</b>	<b>51.1%</b>	<b>27.0%</b>	<b>30.5%</b>	-	<b>31.3%</b>
# Total Intake (net returns)	700	2,851	2,055	0	5,606
Subcategory: # of Strays	553	2,462	1,625	0	4,640
Subcategory: # returned within 30 days of adoption	9	35	35	0	79
# Intakes processed through partner transfers	0	201	8	0	209
# Returned-to-Owner (RTO)	4	10	6	0	20
# Adoptions (net Returns)	338	467	594	0	1,399
# Adoptions processed	347	502	629	0	1,478
# Returned to Field	0	0	0	0	0
# transferred to partners	76	282	69	0	427
# transferred out of the partnership for Placement	16	292	27	0	335
# euthanized per owner request	1	3	9	0	13
# euthanized other than owner request	247	1,817	1,326	0	3,390
# died in care	4	195	23	0	222
# lost in care	4	9	13	0	26

## ASPCA: 2011 Animal Stats YTD Dashboard Summary -- Definitions

### Key Indicators

<b>Live Release Rate</b>	Rate calculation = Total Live Release count divided by Total Intake
<b>Total Live Release</b>	<b>Community/Partnership total live release:</b> sum of (animals returned to owner, adopted (net of returns), Released to Field (felines), or transferred outside the partner organizations to agencies that guarantee adoption of the animals transferred to them) minus the number of animals adopted but returned within 30 days.
<b>Total Intake</b>	<b>Community/Partnership total intake:</b> sum of animals entering all partner agencies from non-partner sources (i.e., excludes number transferred between Dashboard-reporting partners), minus animals returned within 30 days of being adopted from one of the reporting partners.
<b>Euthanasia</b>	The total number of animals in partner facility(s) that were euthanized for all reasons (including Owner Request).
<b>Targeted Spay/Neuter</b>	The total number of animals altered through no or low-cost spay/neuter services or a TNR program. Targeted includes: <ul style="list-style-type: none"> <li>• Low-income by actual level or entitlement qualification OR</li> <li>• Low-income / high-risk by location of residence OR</li> <li>• Unlikely to have been altered in the absence of low-cost program OR</li> <li>• Impounded one or more times as a stray OR</li> <li>• Feral or free-roaming animal</li> </ul>

### Animal categories

<b>Dogs</b>	Canines over 5 months of age.
<b>Puppies</b>	Canines 6 weeks up to and including 5 months of age.
<b>Canine neonates</b>	Canines up to 6 weeks old.
<b>Cats</b>	Felines over 5 months of age.
<b>Kittens</b>	Felines 6 weeks up to and including 5 months of age.
<b>Feline neonates</b>	Felines up to 6 weeks old.

### Intake Terms

<b>Stray</b>	Animals picked up in field or brought to shelter (by anyone) that have no known owner.
<b>Transfer from non-partner agencies</b>	This number includes animals transferred FROM agencies that are not "Dashboard-reporting" partners.
<b>Transfer from partner</b>	Animals transferred from a "dashboard-reporting" partner.
<b>Returns within 30 Days</b>	Animals returned to shelter within 30 days of being adopted from that agency.

### Outcome Terms

<b>Return to owner (RTO)</b>	The number of animals included in shelter Intake count (current or prior reporting period) that are successfully reunited with their owners (i.e. reclaimed from shelter).
<b>Adoption</b>	This number includes final adoptions only. It does not include animals placed in foster care, on overnight 'trial' stays, or on hold at shelter prior to completion of adoption agreement.
<b>Return to Field</b>	These are animals included in Intake (current or a prior month), altered and returned to stray capture location as free-roaming felines.
<b>Transfer - partners</b>	This number includes animals sent to other agencies or organizations that are "Dashboard-reporting" partners.
<b>Transfer - non-partners</b>	This number includes animals transferred to agencies that are not "Dashboard-reporting" partners that guarantee placement.
<b>Euth - owner-requested</b>	Narrow category that should only include animals that were brought to the facility specifically for a low cost euthanasia option. Animals relinquished for adoption that are deemed "unadoptable" by the partner agency should not be included here.
<b>Euth - all other [reasons]</b>	The number of animals euthanized for all reasons EXCEPT owner-requested.
<b>Died in care</b>	Animals in the agency's care that die (cause is NOT euthanasia) during their stay (in shelter or foster).
<b>Lost in Care</b>	Animals lost while in agency's care (e.g., escape from foster home).

### Targeted Spay/Neuter terms

<b>Targeted S/N [by animal type, other than TNR]</b>	This number includes only S/N conducted on owned animals. It does not include shelter animals altered before adoption, or cats or kittens altered through a TNR program.
<b>TNR (Trap, Neuter, Release)</b>	Surgery count for stray,feral and/or free-roaming felines returned to a colony or other source location post-surgery. It does not include owned animals or shelter cats or kittens who will not be returned to a colony. It DOES include felines taken into the Shelter, counted as intake and then altered and Released to the Field.

<b>Community Descriptors (1)</b>	<b>U.S.</b>	<b>Mayor's Alliance, NYC, NY</b>	<b>Hillsborough County, FL (Tampa)</b>	<b>Spokane County, WA</b>	<b>Travis County, TX (Austin)</b>	<b>Charleston, SC</b>	<b>Oklahoma City, OK</b>	<b>Buncombe County, NC</b>	<b>Cleveland, OH</b>	<b>Shelby County, AL</b>	<b>Sacramento County, CA</b>	<b>Miami-Dade County, FL</b>	<b>San Francisco Cnty (c)</b>
<b>clockstart</b>		<b>2003</b>	<b>May-07</b>	<b>Aug-07</b>	<b>Jan-07</b>	<b>Apr-08</b>	<b>July-08</b>	<b>July-08</b>	<b>July-08</b>	<b>July-09</b>	<b>July-09</b>	<b>January-11</b>	
<b>Human Population 2009 (a)</b>													
Total population in thousands (2010 Census)	307,007	8,175	1,229	471	1,024	350	580	238	397	195	1,419	<b>2,496</b>	805
2015/2010 growth (cumulative, not annual rate)	5%	1%	7%	7%	13%	8%	9%	5%	-6%	11%	6%	<b>4%</b>	4%
Percent of population that is urban	79%	100%	94%	86%	93%	86%	90%	71%	100%	64%	98%	<b>99%</b>	100%
Percent of population 18 and over in poverty	13%	16%	13%	14%	14%	14%	15%	15%	30%	5%	13%	<b>16%</b>	12%
Number of households in thousands	113,616	3,087	456	186	398	145	224	98	185	74	507	<b>813</b>	325
Median household income	\$ 50,221	\$ 50,033	\$ 47,168	\$ 44,719	\$ 53,396	\$ 46,473	\$ 41,411	\$ 40,675	\$ 24,687	\$ 64,371	\$ 52,504	<b>\$ 41,533</b>	\$ 70,770
White Pop	299,773	3,912	892	423	716	231	373	205	189	163	859	<b>1,841</b>	444
White population in percent (d)	98%	48%	73%	90%	70%	66%	64%	86%	48%	83%	61%	<b>74%</b>	55%
Black or AA Pop	38,094	2,110	205	7	86	108	83	16	219	20	138	<b>482</b>	50
Black or African American population in percent (d)	12%	26%	17%	2%	8%	31%	14%	7%	55%	10%	10%	<b>19%</b>	6%
Asian Pop	13,775	1,004	38	11	56	6	22	2	7	3	192	<b>41</b>	252
Asian population in percent (d)	4%	12%	3%	2%	5%	2%	4%	1%	2%	2%	14%	<b>2%</b>	31%
Hispanic Pop	48,357	2,315	280	20	341	14	88	11	40	8	287	<b>1563</b>	117
Hispanic population in percent (d)	16%	28%	23%	4%	33%	4%	15%	5%	10%	4%	20%	<b>63%</b>	15%
Percent of population that speaks English less than "very well"	9%	23%	10%	3%	15%	3%	9%	3%	5%	na	13%	<b>35%</b>	23%
Rental HHs	38,773	2,051	176	65	190	60	91	32	100	16	215	<b>350</b>	202
Rental households as percent of total	34%	66%	39%	35%	48%	41%	41%	32%	54%	21%	42%	<b>43%</b>	62%
No vehicle HHs	10,109	1,676	30	13	21	12	16	6	46	2	37	<b>90</b>	98
Percent of households with no vehicles	9%	54%	7%	7%	5%	9%	7%	6%	25%	2%	7%	<b>11%</b>	30%
<b>Animal Population (b)</b>													
Percent of households with dogs - 2007 (Dec. 31, 2006)	37.2%	26.1%	35.6%	39.9%	44.6%	39.2%	55.8%	43.3%	36.2%	41.2%	34.4%	<b>35.6%</b>	34.4%
Average number of dogs per household	1.7	1.5	1.7	1.6	1.8	1.8	2.0	1.8	1.7	1.9	1.6	<b>1.7</b>	1.6
Estimated number of owned dogs, in thousands	71,851	1,209	276	119	320	102	249	77	114	58	279	<b>492</b>	179
Percentage of households with cats	32.4%	28.7%	28.8%	44.5%	31.1%	29.4%	34.2%	31.1%	32.4%	31.7%	32.6%	<b>28.8%</b>	32.6%
Average number of cats per household	2.2	2.0	2.1	2.0	2.4	2.2	2.6	2.2	2.4	2.3	2.1	<b>2.1</b>	2.1
Estimated number of owned cats	80,986	1,772	276	165	297	94	199	67	144	54	347	<b>492</b>	222
Estimated number of owned animals, in thousands	152,837	2,981	551	284	617	196	448	144	258	112	627	<b>983</b>	401
Estimated number of free-roaming cats in thousands (e)	49,082	1,334	197	80	172	63	97	42	80	32	219	<b>351</b>	140
Estimated total number of animals, in thousands	201,919	4,315	748	364	789	258	545	186	338	144	846	<b>1,335</b>	541
Estimated number of owned animals in poverty, in thousands	19,105	486	71	40	86	26	68	22	77	6	83	<b>156</b>	46

**Notes:**

- 1 Sources: American Community Survey Estimates: 2009 (human population), AVMA, US Pet Ownership & Demographics Sourcebook, 2007 Edition (animal population)
- a. The 2009 ACS one-year estimates are based on data collected between January 2009 and December 2009. They are published for selected geographic areas with populations of 65,000 or greater, represent the average characteristics over calendar year 2009.
- b. Source: 2007 U.S. Pet Ownership & Demographics Sourcebook (per AVMA website) (based on US Census Bureau: 2006 Current Population Survey), Tables 1-8 & 1-13.
- d. Ethnicities do not add to 100% because Hispanic can include White and Black. Also, white and black are people reporting one race only.
- e. 12% of households feed 3.6 cats each (Levy, J, Woods, J, Turick, S; & Etheridge, D. "Number of Free-roaming Cats in a College Community in the Southern United States and Characteristics of Community Residents who Feed Them." *J Am Vet Med Assoc* 2003; 223(2): 202-205)