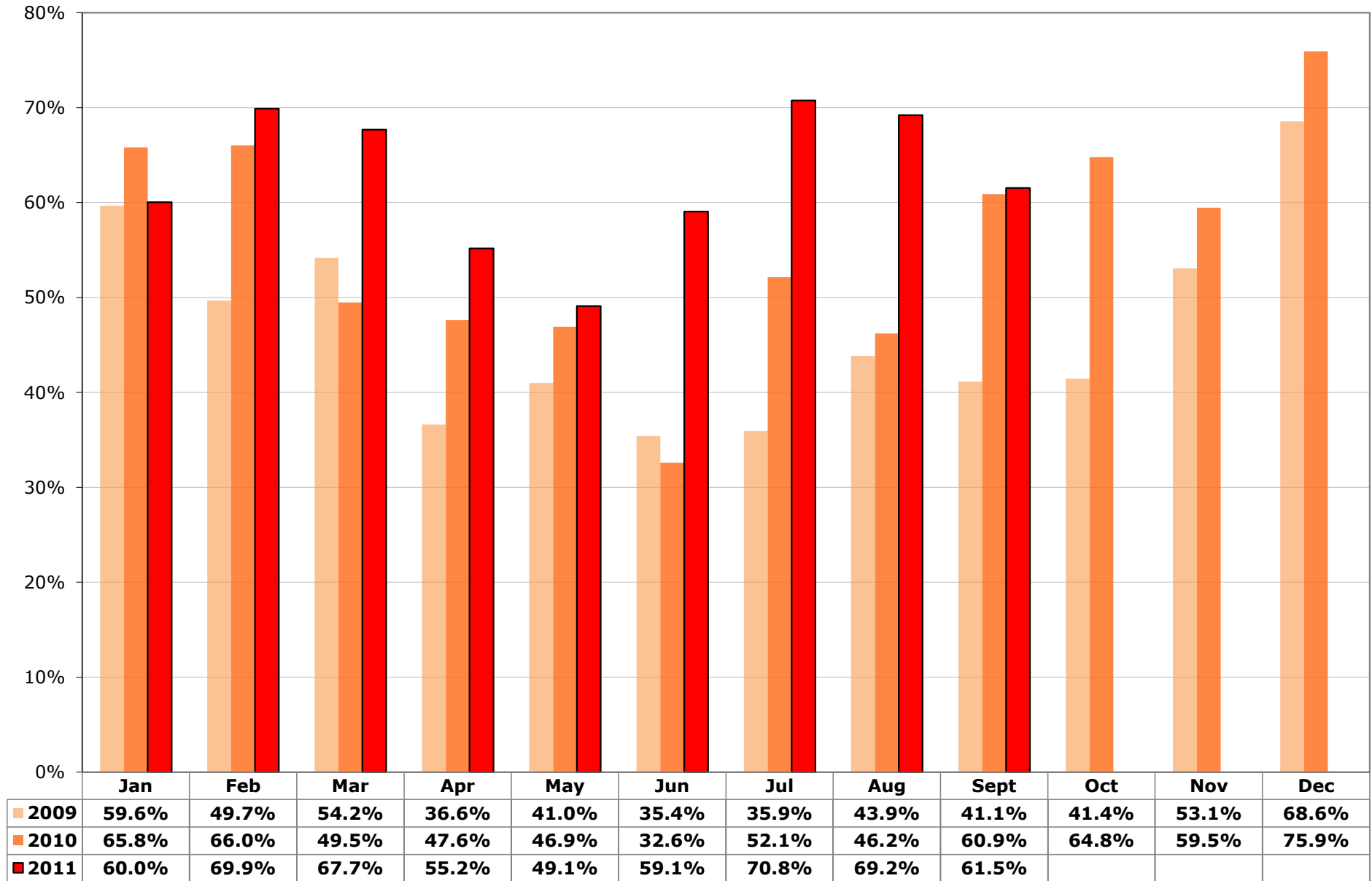


Charleston Live Release Rate - Year over Year



Charleston, SC: Dashboard Summary: 2010

Indicators - 2011	Rate/000 People	Dogs (adults)	Puppies & Neonates	Cats (adults)	Kittens & Neonates	Total YTD
Live Release Rate		61.4%	77.3%	64.4%	53.3%	62.1%
Total Live Release	16.43	1,593	930	1,845	1,387	5,755
Total Intake (net Returns)	26.45	2,595	1,203	2,866	2,600	9,264
Total Stray Intake	20.69	1,741	877	2,392	2,235	7,245
Total Returns	0.69	132	39	49	23	243
Total Returned to Owner (RTO)	1.73	495	29	80	3	607
Total Adopted (net Returns)	10.14	966	869	635	1,082	3,552
Total Returned to Field Felines	3.79	na	na	1,095	233	1,328
Transferred out of Partnership for Placement	0.77	132	32	35	69	268
Total Animals Euthanized	9.02	966	234	947	1,012	3,159
Targeted Spay/Neuter Surgeries	26.28	3,611	840	3,363	1,391	9,205
<i>Other Rates:</i>						
RTO Rate (as % of Stray intake)		28%	3%	3%	0%	8%
Adoption Rate (as % of Total Intake)		37%	72%	22%	42%	38%
Return Rate (% of Adoptions Processed)		12%	4%	7%	2%	6%
Euthanasia Rate (as % of Total Intake)		37%	19%	33%	39%	34%

Targeted Spay/ Neuter and TNR	Q1	Q2	Q3	Q4	Total YTD
# targeted S/N conducted on cats (other than TNR)	726	495	666	0	1,887
# targeted S/N conducted on kittens (other than TNR)	203	204	593	0	1,000
# targeted S/N conducted on dogs	1,165	1,080	1,366	0	3,611
# targeted S/N conducted on puppies	270	268	302	0	840
# Cat(s) TNR	580	479	417	0	1,476
# Kitten(s) TNR	71	66	254	0	391
Total Spay/Neuter and TNR	3,015	2,592	3,598	0	9,205

Charleston, SC: Dashboard Summary: 2010

Intake and Outcomes	All CANINES				
	Q1	Q2	Q3	Q4	Total
Live Release Rate	65.8%	61.7%	71.4%	-	66.4%
# Total Live Release	728	809	986	0	2,523
# Total Intake (net returns)	1,107	1,311	1,380	0	3,798
Subcategory: # of Strays	749	876	993	0	2,618
Subcategory: # returned within 30 days of adoption	47	54	70	0	171
# Intakes processed through partner transfers	26	47	61	0	134
# Returned-to-Owner (RTO)	170	142	212	0	524
# Adoptions (net Returns)	491	605	739	0	1,835
# Adoptions processed	538	659	809	0	2,006
# transferred to partners	26	47	61	0	134
# transferred out of the partnership for Placement	67	62	35	0	164
# euthanized per owner request	25	65	40	0	130
# euthanized other than owner request	324	360	386	0	1,070
# died in care	1	12	7	0	20
# lost in care	3	1	5	0	9
<i>Other Rates:</i>					
RTO Rate (as % of Stray intake)	23%	16%	21%	-	20%
Adoption Rate (as % of Total Intake)	44%	46%	54%	-	48%
Return Rate (% of Adoptions Processed)	9%	8%	9%	-	9%
Euthanasia Rate (as % of Total Intake)	32%	32%	31%	-	32%

Intake and Outcomes	All FELINES				
	Q1	Q2	Q3	Q4	Total
Live Release Rate	66.1%	49.6%	64.3%	-	59.1%
# Total Live Release	915	1,040	1,277	0	3,232
# Total Intake (net returns)	1,384	2,095	1,987	0	5,466
Subcategory: # of Strays	1,146	1,826	1,655	0	4,627
Subcategory: # returned within 30 days of adoption	20	19	33	0	72
# Intakes processed through partner transfers	17	50	18	0	85
# Returned-to-Owner (RTO)	33	22	28	0	83
# Adoptions (net Returns)	378	528	811	0	1,717
# Adoptions processed	398	547	844	0	1,789
# Returned to Field	482	429	417	0	1,328
# transferred to partners	17	50	18	0	85
# transferred out of the partnership for Placement	22	61	21	0	104
# euthanized per owner request	25	30	25	0	80
# euthanized other than owner request	428	700	751	0	1,879
# died in care	16	39	29	0	84
# lost in care	2	1	0	0	3
<i>Other Rates:</i>					
RTO Rate (as % of Stray intake)	3%	1%	2%	-	2%
Adoption Rate (as % of Total Intake)	27%	25%	41%	-	31%
Return Rate (% of Adoptions Processed)	5%	3%	4%	-	4%
Euthanasia Rate (as % of Total Intake)	33%	35%	39%	-	36%

Charleston, SC: Dashboard Summary: 2010

Intake and Outcomes	Dogs				
	Q1	Q2	Q3	Q4	Total
Live Release Rate	58.7%	56.7%	68.1%	-	61.4%
# Total Intake (net returns)	782	887	926	0	2,595
Subcategory: # of Strays	526	556	659	0	1,741
Subcategory: # returned within 30 days of adoption	36	45	51	0	132
# Intakes processed through partner transfers	12	27	17	0	56
# Returned-to-Owner (RTO)	153	134	208	0	495
# Adoptions (net Returns)	243	327	396	0	966
# Adoptions processed	279	372	447	0	1,098
# transferred to partners	12	27	17	0	56
# transferred out of the partnership for Placement	63	42	27	0	132
# euthanized per owner request	25	62	36	0	123
# euthanized other than owner request	289	285	269	0	843
# died in care	0	2	1	0	3
# lost in care	1	1	3	0	5

Intake and Outcomes	Puppies & Neonate Canines				
	Q1	Q2	Q3	Q4	Total
Live Release Rate	82.8%	72.2%	78.2%	-	77.3%
# Total Intake (net returns)	325	424	454	0	1,203
Subcategory: # of Strays	223	320	334	0	877
Subcategory: # returned within 30 days of adoption	11	9	19	0	39
# Intakes processed through partner transfers	14	20	44	0	78
# Returned-to-Owner (RTO)	17	8	4	0	29
# Adoptions (net Returns)	248	278	343	0	869
# Adoptions processed	259	287	362	0	908
# transferred to partners	14	20	44	0	78
# transferred out of the partnership for Placement	4	20	8	0	32
# euthanized per owner request	0	3	4	0	7
# euthanized other than owner request	35	75	117	0	227
# died in care	1	10	6	0	17
# lost in care	2	0	2	0	4

Charleston, SC: Dashboard Summary: 2010

Intake and Outcomes	Cats				
	Q1	Q2	Q3	Q4	Total
Live Release Rate	61.5%	71.5%	60.3%	-	64.4%
# Total Intake (net returns)	1,076	920	870	0	2,866
Subcategory: # of Strays	910	771	711	0	2,392
Subcategory: # returned within 30 days of adoption	14	13	22	0	49
# Intakes processed through partner transfers	5	3	2	0	10
# Returned-to-Owner (RTO)	32	22	26	0	80
# Adoptions (net Returns)	189	218	228	0	635
# Adoptions processed	203	231	250	0	684
# Returned to Field	429	396	270	0	1,095
# transferred to partners	5	3	2	0	10
# transferred out of the partnership for Placement	12	22	1	0	35
# euthanized per owner request	25	27	22	0	74
# euthanized other than owner request	364	220	289	0	873
# died in care	2	8	4	0	14
# lost in care	0	1	0	0	1

Intake and Outcomes	Kittens & Neonate Felines				
	Q1	Q2	Q3	Q4	Total
Live Release Rate	82.1%	32.5%	67.3%	-	53.3%
# Total Intake (net returns)	308	1,175	1,117	0	2,600
Subcategory: # of Strays	236	1,055	944	0	2,235
Subcategory: # returned within 30 days of adoption	6	6	11	0	23
# Intakes processed through partner transfers	12	47	16	0	75
# Returned-to-Owner (RTO)	1	0	2	0	3
# Adoptions (net Returns)	189	310	583	0	1,082
# Adoptions processed	195	316	594	0	1,105
# Returned to Field	53	33	147	0	233
# transferred to partners	12	47	16	0	75
# transferred out of the partnership for Placement	10	39	20	0	69
# euthanized per owner request	0	3	3	0	6
# euthanized other than owner request	64	480	462	0	1,006
# died in care	14	31	25	0	70
# lost in care	2	0	0	0	2

ASPCA: 2010 Animal Stats YTD Dashboard Summary -- Definitions

Key Indicators

Live Release Rate	Rate calculation = Total Live Release count divided by Total Intake
Total Live Release	Community/Partnership total live release: sum of (animals returned to owner, adopted (net of returns), Released to Field (felines), or transferred outside the partner organizations to agencies that guarantee adoption of the animals transferred to them) minus the number of animals adopted but returned within 30 days.
Total Intake	Community/Partnership total intake: sum of animals entering all partner agencies from non-partner sources (i.e., excludes number transferred between Dashboard-reporting partners), minus animals returned within 30 days of being adopted from one of the reporting partners.
Euthanasia	The total number of animals in partner facility(s) that were euthanized for all reasons (including Owner Request).
Targeted Spay/Neuter	The total number of animals altered through no or low-cost spay/neuter services or a TNR program. Targeted includes: <ul style="list-style-type: none"> • Low-income by actual level or entitlement qualification OR • Low-income / high-risk by location of residence OR • Unlikely to have been altered in the absence of low-cost program OR • Impounded one or more times as a stray OR • Feral or free-roaming animal

Animal categories

Dogs	Canines over 5 months of age.
Puppies	Canines 6 weeks up to and including 5 months of age.
Canine neonates	Canines up to 6 weeks old.
Cats	Felines over 5 months of age.
Kittens	Felines 6 weeks up to and including 5 months of age.
Feline neonates	Felines up to 6 weeks old.

Intake Terms

Stray	Animals picked up in field or brought to shelter (by anyone) that have no known owner.
Transfer from non-partner agencies	This number includes animals transferred FROM agencies that are not "Dashboard-reporting" partners.
Transfer from partner	Animals transferred from a "dashboard-reporting" partner.
Returns within 30 Days	Animals returned to shelter within 30 days of being adopted from that agency.

Outcome Terms

Return to owner (RTO)	The number of animals included in shelter Intake count (current or prior reporting period) that are successfully reunited with their owners (i.e. reclaimed from shelter).
Adoption	This number includes final adoptions only. It does not include animals placed in foster care, on overnight 'trial' stays, or on hold at shelter prior to completion of adoption agreement.
Return to Field	These are animals included in Intake (current or a prior month), altered and returned to stray capture location as free-roaming felines.
Transfer - partners	This number includes animals sent to other agencies or organizations that are "Dashboard-reporting" partners.
Transfer - non-partners	This number includes animals transferred to agencies that are not "Dashboard-reporting" partners that guarantee placement.
Euth - owner-requested	Narrow category that should only include animals that were brought to the facility specifically for a low cost euthanasia option. Animals relinquished for adoption that are deemed "unadoptable" by the partner agency should not be included here.
Euth - all other [reasons]	The number of animals euthanized for all reasons EXCEPT owner-requested.
Died in care	Animals in the agency's care that die (cause is NOT euthanasia) during their stay (in shelter or foster).
Lost in Care	Animals lost while in agency's care (e.g., escape from foster home).

Targeted Spay/Neuter terms

Targeted S/N [by animal type, other than TNR]	This number includes only S/N conducted on owned animals. It does not include shelter animals altered before adoption, or cats or kittens altered through a TNR program.
TNR (Trap, Neuter, Release)	Surgery count for stray,feral and/or free-roaming felines returned to a colony or other source location post-surgery. It does not include owned animals or shelter cats or kittens who will not be returned to a colony. It DOES include felines taken into the Shelter, counted as intake and then altered and Released to the Field.

Community Descriptors (1)	U.S.	Mayor's Alliance, NYC, NY	Hillsborough County, FL (Tampa)	Spokane County, WA	Travis County, TX (Austin)	Charleston, SC	Oklahoma City, OK	Buncombe County, NC	Cleveland, OH	Shelby County, AL	Sacramento County, CA	Miami-Dade County, FL	San Francisco Cnty (c)
clockstart		2003	May-07	Aug-07	Jan-07	Apr-08	July-08	July-08	July-08	July-09	July-09	January-11	
Human Population 2009 (a)													
Total population in thousands (2010 Census)	307,007	8,175	1,229	471	1,024	350	580	238	397	195	1,419	2,496	805
2015/2010 growth (cumulative, not annual rate)	5%	1%	7%	7%	13%	8%	9%	5%	-6%	11%	6%	4%	4%
Percent of population that is urban	79%	100%	94%	86%	93%	86%	90%	71%	100%	64%	98%	99%	100%
Percent of population 18 and over in poverty	13%	16%	13%	14%	14%	14%	15%	15%	30%	5%	13%	16%	12%
Number of households in thousands	113,616	3,087	456	186	398	145	224	98	185	74	507	813	325
Median household income	\$ 50,221	\$ 50,033	\$ 47,168	\$ 44,719	\$ 53,396	\$ 46,473	\$ 41,411	\$ 40,675	\$ 24,687	\$ 64,371	\$ 52,504	\$ 41,533	\$ 70,770
White Pop	299,773	3,912	892	423	716	231	373	205	189	163	859	1,841	444
White population in percent (d)	98%	48%	73%	90%	70%	66%	64%	86%	48%	83%	61%	74%	55%
Black or AA Pop	38,094	2,110	205	7	86	108	83	16	219	20	138	482	50
Black or African American population in percent (d)	12%	26%	17%	2%	8%	31%	14%	7%	55%	10%	10%	19%	6%
Asian Pop	13,775	1,004	38	11	56	6	22	2	7	3	192	41	252
Asian population in percent (d)	4%	12%	3%	2%	5%	2%	4%	1%	2%	2%	14%	2%	31%
Hispanic Pop	48,357	2,315	280	20	341	14	88	11	40	8	287	1563	117
Hispanic population in percent (d)	16%	28%	23%	4%	33%	4%	15%	5%	10%	4%	20%	63%	15%
Percent of population that speaks English less than "very well"	9%	23%	10%	3%	15%	3%	9%	3%	5%	na	13%	35%	23%
Rental HHs	38,773	2,051	176	65	190	60	91	32	100	16	215	350	202
Rental households as percent of total	34%	66%	39%	35%	48%	41%	41%	32%	54%	21%	42%	43%	62%
No vehicle HHs	10,109	1,676	30	13	21	12	16	6	46	2	37	90	98
Percent of households with no vehicles	9%	54%	7%	7%	5%	9%	7%	6%	25%	2%	7%	11%	30%
Animal Population (b)													
Percent of households with dogs - 2007 (Dec. 31, 2006)	37.2%	26.1%	35.6%	39.9%	44.6%	39.2%	55.8%	43.3%	36.2%	41.2%	34.4%	35.6%	34.4%
Average number of dogs per household	1.7	1.5	1.7	1.6	1.8	1.8	2.0	1.8	1.7	1.9	1.6	1.7	1.6
Estimated number of owned dogs, in thousands	71,851	1,209	276	119	320	102	249	77	114	58	279	492	179
Percentage of households with cats	32.4%	28.7%	28.8%	44.5%	31.1%	29.4%	34.2%	31.1%	32.4%	31.7%	32.6%	28.8%	32.6%
Average number of cats per household	2.2	2.0	2.1	2.0	2.4	2.2	2.6	2.2	2.4	2.3	2.1	2.1	2.1
Estimated number of owned cats	80,986	1,772	276	165	297	94	199	67	144	54	347	492	222
Estimated number of owned animals, in thousands	152,837	2,981	551	284	617	196	448	144	258	112	627	983	401
Estimated number of free-roaming cats in thousands (e)	49,082	1,334	197	80	172	63	97	42	80	32	219	351	140
Estimated total number of animals, in thousands	201,919	4,315	748	364	789	258	545	186	338	144	846	1,335	541
Estimated number of owned animals in poverty, in thousands	19,105	486	71	40	86	26	68	22	77	6	83	156	46

Notes:

- 1 Sources: American Community Survey Estimates: 2009 (human population), AVMA, US Pet Ownership & Demographics Sourcebook, 2007 Edition (animal population)
- a. [The 2009 ACS one-year estimates are based on data collected between January 2009 and December 2009. They are published for selected geographic areas with populations of 65,000 or greater, represent the average characteristics over calendar year 2009. hav](#)
- b. Source: 2007 U.S. Pet Ownership & Demographics Sourcebook (per AVMA website) (based on US Census Bureau: 2006 Current Population Survey), Tables 1-8 & 1-13.
- d. Ethnicities do not add to 100% because Hispanic can include White and Black. Also, white and black are people reporting one race only.
- e. 12% of households feed 3.6 cats each (Levy, J, Woods, J, Turick, S; & Etheridge, D. "Number of Free-roaming Cats in a College Community in the Southern United States and Characteristics of Community Residents who Feed Them." J Am Vet Med Assoc 2003; 223(2): 202-205)