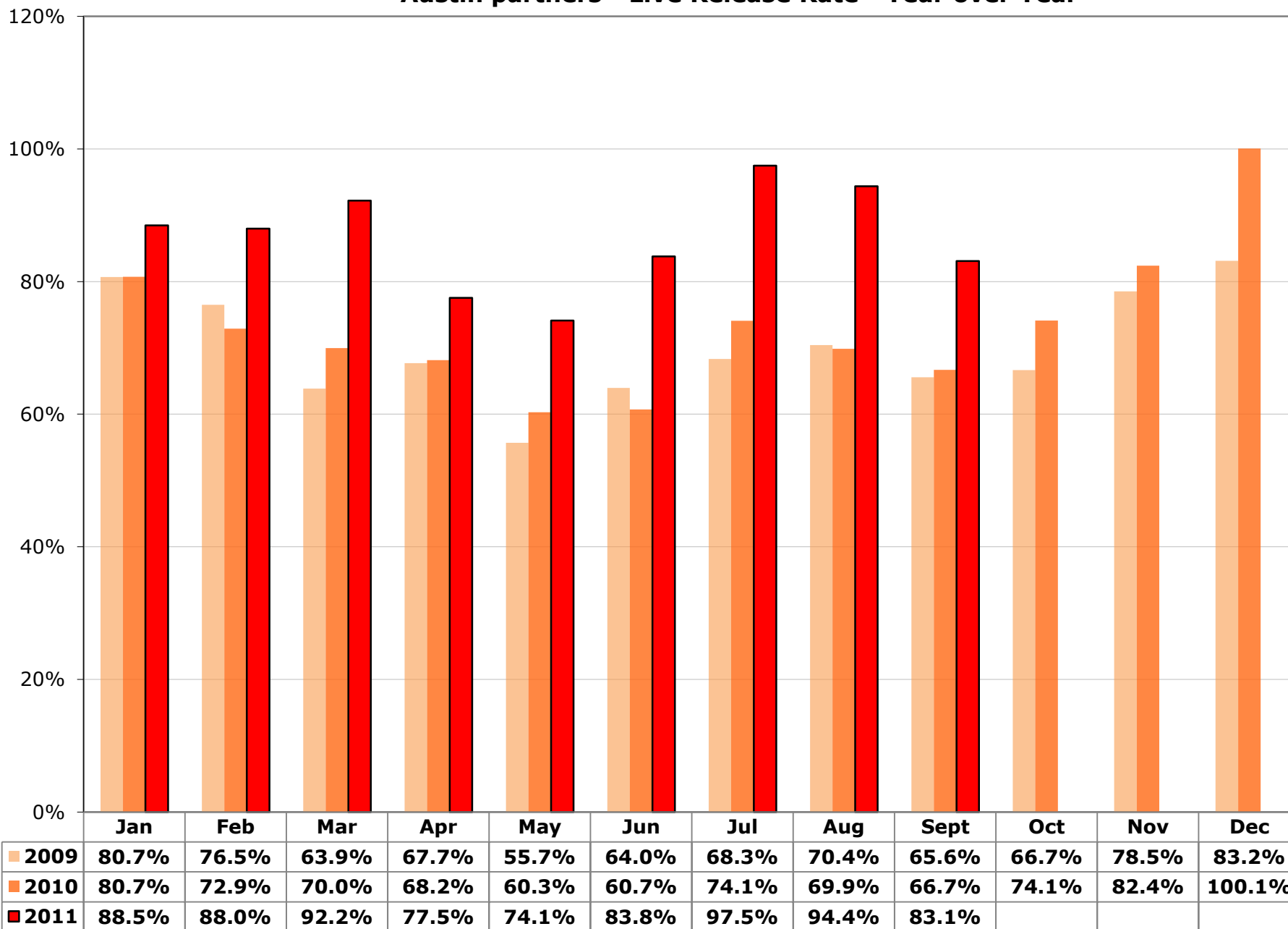


Austin partners - Live Release Rate - Year over Year



Austin, TX: Dashboard Summary: 2011

Indicators - 2011	Rate/000 People	Dogs (adults)	Puppies & Neonates	Cats (adults)	Kittens & Neonates	Total YTD
Live Release Rate		85.9%	89.4%	87.2%	83.3%	86.1%
Total Live Release	13.35	6,201	2,016	2,535	2,920	13,672
Total Intake	15.51	7,219	2,255	2,906	3,505	15,885
Total Stray Intake	8.46	4,265	1,176	1,339	1,882	8,662
Total Returns	0.33	173	43	72	47	335
Total Returned to Owner (RTO)	2.36	2,026	101	244	51	2,422
Total Adopted	7.90	3,151	1,432	1,524	1,984	8,091
Total Returned to Field	0.25	na	na	215	37	252
Transferred out to Non-Partners	2.84	1,024	483	552	848	2,907
Total Animals Euthanized	1.19	734	48	315	126	1,223
Targeted Spay/Neuter Surgeries	21.42	8,067	2,600	7,410	3,859	21,936
<i>Other Rates:</i>						
RTO Rate (as % of Stray intake)		48%	9%	18%	3%	28%
Adoption Rate (as % of Total Intake)		44%	64%	52%	57%	51%
Return Rate (% of Adoptions)		5%	3%	5%	2%	4%
Euthanasia Rate (as % of Total Intake)		10%	2%	11%	4%	8%

Targeted Spay/ Neuter and TNR	Q1	Q2	Q3	Q4	Total YTD
# targeted S/N conducted on cats (other than	2,013	1,316	1,182	0	4,511
# targeted S/N conducted on kittens (other th	680	599	1,419	0	2,698
# targeted S/N conducted on dogs	2,574	2,840	2,653	0	8,067
# targeted S/N conducted on puppies	615	913	1,072	0	2,600
# Cat(s) TNR	1,132	1,032	735	0	2,899
# Kitten(s) TNR	390	232	539	0	1,161
Total Spay/Neuter and TNR	7,404	6,932	7,600	0	21,936

Austin, TX: Dashboard Summary: 2011

Intake and Outcomes	All CANINES				
	Q1	Q2	Q3	Q4	Total
Live Release Rate	88.3%	83.9%	88.0%	-	86.7%
# Total Live Release	2,644	2,672	2,901	0	8,217
# Total Intake	2,995	3,184	3,295	0	9,474
# of Strays	1,727	1,765	1,949	0	5,441
# returned within 30 days of adoption	91	51	74	0	216
# Intakes processed through partner transfer:	111	92	80	0	283
# Returned-to-Owner (RTO)	710	676	741	0	2,127
# Adoptions processed	1,418	1,470	1,695	0	4,583
# transferred to partners	111	93	77	0	281
# transferred out to Non-Partners	516	526	465	0	1,507
# euthanized per owner request	24	21	11	0	56
# euthanized other than owner request	262	320	144	0	726
# died in care	6	15	5	0	26
# lost in care	3	5	4	0	12
<i>Other Rates:</i>					
RTO Rate (as % of Stray intake)	41%	38%	38%	-	39%
Adoption Rate (as % of Total Intake)	47%	46%	51%	-	48%
Return Rate (% of Adoptions)	6%	3%	4%	-	5%
Euthanasia Rate (as % of Total Intake)	10%	11%	5%	-	8%

Intake and Outcomes	All FELINES				
	Q1	Q2	Q3	Q4	Total
Live Release Rate	92.6%	72.1%	97.3%	-	85.1%
# Total Live Release	1,288	2,051	2,116	0	5,455
# Total Intake	1,391	2,846	2,174	0	6,411
# of Strays	603	1,573	1,045	0	3,221
# returned within 30 days of adoption	27	30	62	0	119
# Intakes processed through partner transfer:	81	218	132	0	431
# Returned-to-Owner (RTO)	88	107	100	0	295
# Adoptions processed	814	1,162	1,532	0	3,508
# transferred to partners	81	214	136	0	431
# transferred out to Non-Partners	358	665	377	0	1,400
# euthanized per owner request	12	5	6	0	23
# euthanized other than owner request	153	158	107	0	418
# died in care	7	25	26	0	58
# lost in care	0	3	16	0	19
<i>Other Rates:</i>					
RTO Rate (as % of Stray intake)	15%	7%	10%	-	9%
Adoption Rate (as % of Total Intake)	59%	40%	68%	-	55%
Return Rate (% of Adoptions)	3%	3%	4%	-	3%
Euthanasia Rate (as % of Total Intake)	12%	6%	5%	-	7%

Austin, TX: Dashboard Summary: 2011

Intake and Outcomes	Dogs				
	Q1	Q2	Q3	Q4	Total
Live Release Rate	86.3%	86.0%	85.5%	-	85.9%
# Total Intake	2,310	2,435	2,474	0	7,219
# of Strays	1,415	1,355	1,495	0	4,265
# returned within 30 days of adoption	69	45	59	0	173
# Intakes processed through partner transfer:	67	72	42	0	181
# Returned-to-Owner (RTO)	676	644	706	0	2,026
# Adoptions processed	908	1,106	1,137	0	3,151
# transferred to partners	67	80	44	0	191
# transferred out to Non-Partners	409	343	272	0	1,024
# euthanized per owner request	24	21	10	0	55
# euthanized other than owner request	253	293	133	0	679
# died in care	2	8	5	0	15
# lost in care	3	4	3	0	10

Intake and Outcomes	Puppies & Neonate Canines				
	Q1	Q2	Q3	Q4	Total
Live Release Rate	95.0%	77.3%	95.7%	-	89.4%
# Total Intake	685	749	821	0	2,255
# of Strays	312	410	454	0	1,176
# returned within 30 days of adoption	22	6	15	0	43
# Intakes processed through partner transfer:	44	20	38	0	102
# Returned-to-Owner (RTO)	34	32	35	0	101
# Adoptions processed	510	364	558	0	1,432
# transferred to partners	44	13	33	0	90
# transferred out to Non-Partners	107	183	193	0	483
# euthanized per owner request	0	0	1	0	1
# euthanized other than owner request	9	27	11	0	47
# died in care	4	7	0	0	11
# lost in care	0	1	1	0	2

Intake and Outcomes	Puppies				
	Q1	Q2	Q3	Q4	Total
Live Release Rate	108.6%	82.0%	104.6%	-	98.0%
# Total Intake	556	656	691	0	1,903
Subcategory: # of Strays	270	378	377	0	1,025
Subcategory: # returned within 30 days of	22	6	15	0	43
# Intakes processed through partner transfer:	38	17	30	0	85
# Returned-to-Owner (RTO)	27	32	35	0	94
# Adoptions (net Returns)	510	358	543	0	1,411
# Adoptions processed	510	364	558	0	1,432
# transferred to partners	38	13	28	0	79
# transferred out of the partnership for Placer	67	142	130	0	339
# euthanized per owner request	0	0	1	0	1
# euthanized other than owner request	9	24	9	0	42
# died in care	0	1	0	0	1

Austin, TX: Dashboard Summary: 2011

# lost in care	0	1	1	0	2
----------------	---	---	---	---	---

Intake and Outcomes	Neonate Canines				Total
	Q1	Q2	Q3	Q4	
Live Release Rate	36.4%	44.1%	48.5%	-	42.9%
# Total Intake	129	93	130	0	352
Subcategory: # of Strays	42	32	77	0	151
Subcategory: # returned within 30 days of	0	0	0	0	0
# Intakes processed through partner transfer:	6	3	8	0	17
# Returned-to-Owner (RTO)	7	0	0	0	7
# Adoptions (net Returns)	0	0	0	0	0
# Adoptions processed	0	0	0	0	0
# transferred to partners	6	0	5	0	11
# transferred out of the partnership for Placer	40	41	63	0	144
# euthanized per owner request	0	0	0	0	0
# euthanized other than owner request	0	3	2	0	5
# died in care	4	6	0	0	10
# lost in care	0	0	0	0	0

Austin, TX: Dashboard Summary: 2011

Intake and Outcomes	<u>Cats</u>				
	Q1	Q2	Q3	Q4	Total
Live Release Rate	85.1%	87.8%	88.8%	-	87.2%
# Total Intake	979	987	940	0	2,906
# of Strays	425	462	452	0	1,339
# returned within 30 days of adoption	19	23	30	0	72
# Intakes processed through partner transfer:	73	136	73	0	282
# Returned-to-Owner (RTO)	73	87	84	0	244
# Adoptions processed	477	505	542	0	1,524
# Returned to Field	26	112	77	0	215
# transferred to partners	73	140	85	0	298
# transferred out to Non-Partners	257	163	132	0	552
# euthanized per owner request	12	5	6	0	23
# euthanized other than owner request	136	91	65	0	292
# died in care	2	4	9	0	15
# lost in care	0	1	8	0	9

Intake and Outcomes	<u>Kittens & Neonate Felines</u>				
	Q1	Q2	Q3	Q4	Total
Live Release Rate	110.4%	63.7%	103.8%	-	83.3%
# Total Intake	412	1,859	1,234	0	3,505
# of Strays	178	1,111	593	0	1,882
# returned within 30 days of adoption	8	7	32	0	47
# Intakes processed through partner transfer:	8	82	59	0	149
# Returned-to-Owner (RTO)	15	20	16	0	51
# Adoptions processed	337	657	990	0	1,984
# Returned to Field	2	5	30	0	37
# transferred to partners	8	74	51	0	133
# transferred out to Non-Partners	101	502	245	0	848
# euthanized per owner request	0	0	0	0	0
# euthanized other than owner request	17	67	42	0	126
# died in care	5	21	17	0	43
# lost in care	0	2	8	0	10

Community Descriptors (1)	U.S.	Mayor's Alliance, NYC, NY	Hillsborough County, FL (Tampa)	Spokane County, WA	Travis County, TX (Austin)	Charleston, SC	Oklahoma City, OK	Buncombe County, NC	Cleveland, OH	Shelby County, AL	Sacramento County, CA	Miami-Dade County, FL	San Francisco Cnty (c)
clockstart		2003	May-07	Aug-07	Jan-07	Apr-08	July-08	July-08	July-08	July-09	July-09	January-11	
Human Population 2009 (a)													
Total population in thousands (2010 Census)	307,007	8,175	1,229	471	1,024	350	580	238	397	195	1,419	2,496	805
2015/2010 growth (cumulative, not annual rate)	5%	1%	7%	7%	13%	8%	9%	5%	-6%	11%	6%	4%	4%
Percent of population that is urban	79%	100%	94%	86%	93%	86%	90%	71%	100%	64%	98%	99%	100%
Percent of population 18 and over in poverty	13%	16%	13%	14%	14%	14%	15%	15%	30%	5%	13%	16%	12%
Number of households in thousands	113,616	3,087	456	186	398	145	224	98	185	74	507	813	325
Median household income	\$ 50,221	\$ 50,033	\$ 47,168	\$ 44,719	\$ 53,396	\$ 46,473	\$ 41,411	\$ 40,675	\$ 24,687	\$ 64,371	\$ 52,504	\$ 41,533	\$ 70,770
White Pop	299,773	3,912	892	423	716	231	373	205	189	163	859	1,841	444
White population in percent (d)	98%	48%	73%	90%	70%	66%	64%	86%	48%	83%	61%	74%	55%
Black or AA Pop	38,094	2,110	205	7	86	108	83	16	219	20	138	482	50
Black or African American population in percent (d)	12%	26%	17%	2%	8%	31%	14%	7%	55%	10%	10%	19%	6%
Asian Pop	13,775	1,004	38	11	56	6	22	2	7	3	192	41	252
Asian population in percent (d)	4%	12%	3%	2%	5%	2%	4%	1%	2%	2%	14%	2%	31%
Hispanic Pop	48,357	2,315	280	20	341	14	88	11	40	8	287	1563	117
Hispanic population in percent (d)	16%	28%	23%	4%	33%	4%	15%	5%	10%	4%	20%	63%	15%
Percent of population that speaks English less than "very well"	9%	23%	10%	3%	15%	3%	9%	3%	5%	na	13%	35%	23%
Rental HHs	38,773	2,051	176	65	190	60	91	32	100	16	215	350	202
Rental households as percent of total	34%	66%	39%	35%	48%	41%	41%	32%	54%	21%	42%	43%	62%
No vehicle HHs	10,109	1,676	30	13	21	12	16	6	46	2	37	90	98
Percent of households with no vehicles	9%	54%	7%	7%	5%	9%	7%	6%	25%	2%	7%	11%	30%
Animal Population (b)													
Percent of households with dogs - 2007 (Dec. 31, 2006)	37.2%	26.1%	35.6%	39.9%	44.6%	39.2%	55.8%	43.3%	36.2%	41.2%	34.4%	35.6%	34.4%
Average number of dogs per household	1.7	1.5	1.7	1.6	1.8	1.8	2.0	1.8	1.7	1.9	1.6	1.7	1.6
Estimated number of owned dogs, in thousands	71,851	1,209	276	119	320	102	249	77	114	58	279	492	179
Percentage of households with cats	32.4%	28.7%	28.8%	44.5%	31.1%	29.4%	34.2%	31.1%	32.4%	31.7%	32.6%	28.8%	32.6%
Average number of cats per household	2.2	2.0	2.1	2.0	2.4	2.2	2.6	2.2	2.4	2.3	2.1	2.1	2.1
Estimated number of owned cats	80,986	1,772	276	165	297	94	199	67	144	54	347	492	222
Estimated number of owned animals, in thousands	152,837	2,981	551	284	617	196	448	144	258	112	627	983	401
Estimated number of free-roaming cats in thousands (e)	49,082	1,334	197	80	172	63	97	42	80	32	219	351	140
Estimated total number of animals, in thousands	201,919	4,315	748	364	789	258	545	186	338	144	846	1,335	541
Estimated number of owned animals in poverty, in thousands	19,105	486	71	40	86	26	68	22	77	6	83	156	46

Notes:

- 1 Sources: American Community Survey Estimates: 2009 (human population), AVMA, US Pet Ownership & Demographics Sourcebook, 2007 Edition (animal population)
- a. The 2009 ACS one-year estimates are based on data collected between January 2009 and December 2009. They are published for selected geographic areas with populations of 65,000 or greater, represent the average
- b. Source: 2007 U.S. Pet Ownership & Demographics Sourcebook (per AVMA website) (based on US Census Bureau: 2006 Current Population Survey), Tables 1-8 & 1-13.
- c. Richmond and SF are single-city counties.
- d. Ethnicities do not add to 100% because Hispanic can include White and Black. Also, white and black are people reporting one race only.
- e. 12% of households feed 3.6 cats each (Levy, J, Woods, J, Turick, S; & Etheridge, D. "Number of Free-roaming Cats in a College Community in the Southern United States and Characteristics of Community Residents who Feed Them." *J Am Vet Med Assoc* 2003; 223(2): 202-205)

ASPCA: Animal Stats Dashboard Summary -- Definitions (AUSTIN)

Key Indicators

Live Release Rate	Rate calculation = Total Live Release count divided by Total Intake
Total Live Release	Community/Partnership total live release: sum of animals returned to owner, adopted, Returned to Field (felines), or transferred outside the partner organizations to agencies that guarantee adoption of the animals transferred to them.
Total Intake	Community/Partnership total intake: sum of animals entering all partner agencies from non-partner sources (i.e., excludes number transferred between Dashboard-reporting partners)
Euthanasia	The total number of animals in partner facility(s) that were euthanized for all reasons (including Owner Request).
Targeted Spay/Neuter	The total number of animals altered through no or low-cost spay/neuter services or a TNR program. Targeted includes: <ul style="list-style-type: none"> • Low-income by actual level or entitlement qualification OR • Low-income / high-risk by location of residence OR • Unlikely to have been altered in the absence of low-cost program OR • Impounded one or more times as a stray OR • Feral or free-roaming animal

Animal categories

Dogs	Canines over 5 months of age.
Puppies	Canines 6 weeks up to and including 5 months of age.
Canine neonates	Canines up to 6 weeks old.
Cats	Felines over 5 months of age.
Kittens	Felines 6 weeks up to and including 5 months of age.
Feline neonates	Felines up to 6 weeks old.

Intake Terms

Stray	Animals picked up in field or brought to shelter (by anyone) that have no known owner.
Transfer from non-partner agencies	This number includes animals transferred FROM agencies that are not "Dashboard-reporting" partners.
Transfer from partner	Animals transferred from a "dashboard-reporting" partner.
Returns within 30 Days	Animals returned to shelter within 30 days of being adopted from that agency.

Outcome Terms

Return to owner (RTO)	The number of animals included in shelter Intake count (current or prior reporting period) that are successfully reunited with their owners (i.e. reclaimed from shelter).
Adoption	This number includes final adoptions only. It does not include animals placed in foster care, on overnight 'trial' stays, or on hold at shelter prior to completion of adoption agreement.
Return to Field	These are animals included in Intake (current or a prior month), altered and returned to stray capture location as free-roaming felines.
Transfer - partners	This number includes animals sent to other agencies or organizations that are "Dashboard-reporting" partners.
Transfer – non-partners	This number includes animals transferred to agencies that are not "Dashboard-reporting" partners that guarantee placement.
Euth – owner-requested	Narrow category that should only include animals that were brought to the facility specifically for a low cost euthanasia option. Animals relinquished for adoption that are deemed "unadoptable" by the partner agency should not be included here.
Euth – all other [reasons]	The number of animals euthanized for all reasons EXCEPT owner-requested.
Died in care	Animals in the agency's care that die (cause is NOT euthanasia) during their stay (in shelter or foster).
Lost in Care	Animals lost while in agency's care (e.g., escape from foster home).

Targeted Spay/Neuter terms

Targeted S/N [by animal type, other than TNR]	This number includes only S/N conducted on owned animals. It does not include shelter animals altered before adoption, or cats or kittens altered through a TNR program.
TNR (Trap, Neuter, Release)	Surgery count for stray,feral and/or free-roaming felines returned to a colony or other source location post-surgery. It does not include owned animals or shelter cats or kittens who will not be returned to a colony. It DOES include felines taken into the Shelter, counted as intake and then altered and Released to the Field.